

Anti-RBP2 Antibody
Catalog # ABO11039**Specification**

Anti-RBP2 Antibody - Product Information

Application	WB, IHC
Primary Accession	P50120
Host	Rabbit
Reactivity	Human, Mouse, Rat
Clonality	Polyclonal
Format	Lyophilized

Description

Rabbit IgG polyclonal antibody for Retinol-binding protein 2(RBP2) detection. Tested with WB, IHC-P in Human;Rat;Mouse.

Reconstitution

Add 0.2ml of distilled water will yield a concentration of 500ug/ml.

Anti-RBP2 Antibody - Additional Information

Gene ID 5948

Other Names

Retinol-binding protein 2, Cellular retinol-binding protein II, CRBP-II, RBP2, CRBP2

Calculated MW

15707 MW KDa

Application Details

Immunohistochemistry(Paraffin-embedded Section), 0.5-1 µg/ml, Human, Rat, Mouse, By Heat
Western blot, 0.1-0.5 µg/ml, Mouse, Rat, Human

Subcellular Localization

Cytoplasm.

Tissue Specificity

Higher expression in adult small intestine and to a much lesser extent in fetal kidney. .

Protein Name

Retinol-binding protein 2

Contents

Each vial contains 5mg BSA, 0.9mg NaCl, 0.2mg Na₂HPO₄, 0.05mg Thimerosal, 0.05mg NaN₃.

Immunogen

A synthetic peptide corresponding to a sequence at the C-terminus of human RBP2(117-134aa YLELTGQDVCRQVFKKK), identical to the related rat and mouse sequences.

Purification

Immunogen affinity purified.

Cross Reactivity

No cross reactivity with other proteins

Storage

At -20°C for one year. After reconstitution, at 4°C for one month. It can also be aliquotted and stored frozen at -20°C for a longer time. Avoid repeated freezing and thawing.

Anti-RBP2 Antibody - Protein Information

Name RBP2

Synonyms CRBP2

Function

Intracellular transport of retinol.

Cellular Location

Cytoplasm.

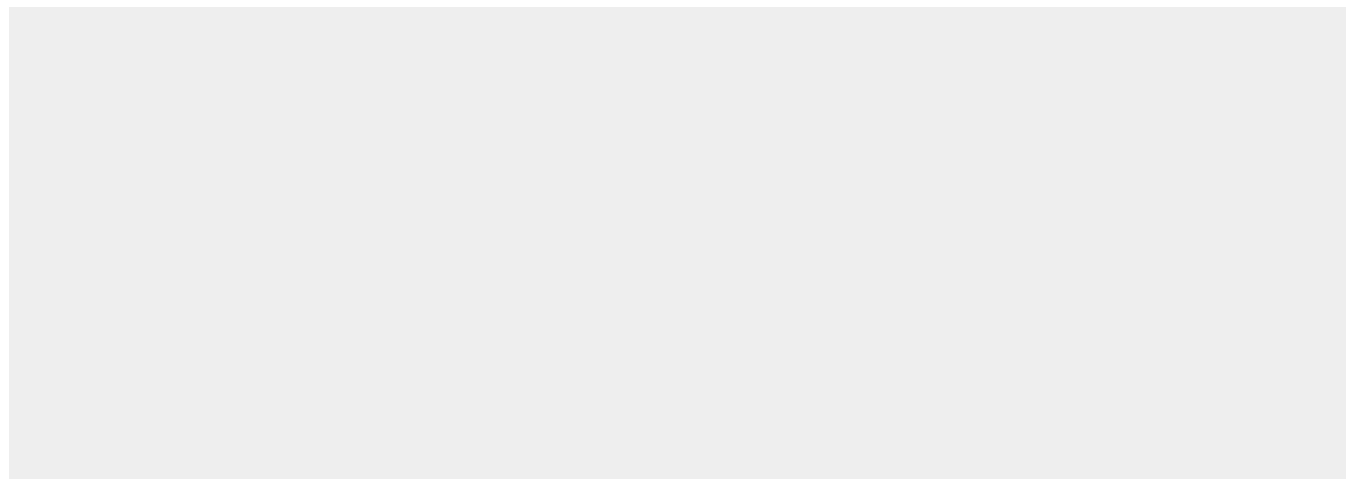
Tissue Location

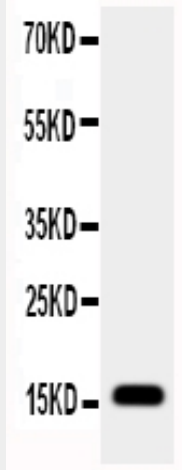
Higher expression in adult small intestine and to a much lesser extent in fetal kidney.

Anti-RBP2 Antibody - Protocols

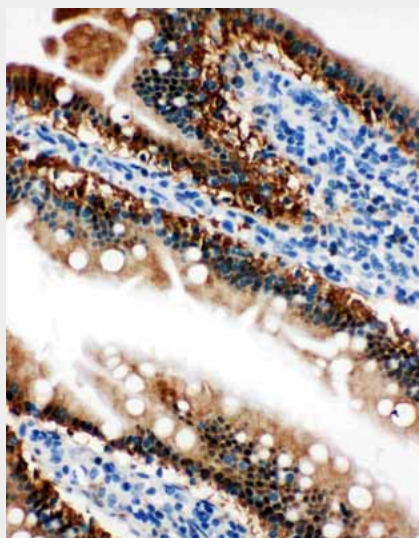
Provided below are standard protocols that you may find useful for product applications.

- [Western Blot](#)
- [Blocking Peptides](#)
- [Dot Blot](#)
- [Immunohistochemistry](#)
- [Immunofluorescence](#)
- [Immunoprecipitation](#)
- [Flow Cytometry](#)
- [Cell Culture](#)

Anti-RBP2 Antibody - Images



Anti-RBP2 antibody, ABO11039, Western blotting All lanes: Anti RBP2 (ABO11039) at 0.5ug/ml WB: Rat Intestine Tissue Lysate at 50ug Predicted bind size: 16KD Observed bind size: 16KD



Anti-RBP2 antibody, ABO11039, IHC(P) IHC(P): Rat Intestine Tissue

Anti-RBP2 Antibody - Background

RBP2(Retinol-binding protein 2) is a protein that in humans is encoded by the RBP2 gene. RBP2 is an abundant protein present in the small intestinal epithelium. It is thought to participate in the uptake and/or intracellular metabolism of vitamin A. Vitamin A is a fat-soluble vitamin necessary for growth, reproduction, differentiation of epithelial tissues, and vision. RBP2 may also modulate the supply of retinoic acid to the nuclei of endometrial cells during the menstrual cycle.