

**Anti-CD25/IL-2sR alpha Antibody**  
Catalog # ABO11056**Specification****Anti-CD25/IL-2sR alpha Antibody - Product Information**

Application	<b>WB, IHC</b>
Primary Accession	<a href="#">P01589</a>
Host	<b>Rabbit</b>
Reactivity	<b>Human</b>
Clonality	<b>Polyclonal</b>
Format	<b>Lyophilized</b>

**Description**

Rabbit IgG polyclonal antibody for Interleukin-2 receptor subunit alpha(IL2RA) detection. Tested with WB, IHC-P in Human.

**Reconstitution**

Add 0.2ml of distilled water will yield a concentration of 500ug/ml.

**Anti-CD25/IL-2sR alpha Antibody - Additional Information**

**Gene ID** 3559

**Other Names**

Interleukin-2 receptor subunit alpha, IL-2 receptor subunit alpha, IL-2-RA, IL-2R subunit alpha, IL2-RA, TAC antigen, p55, CD25, IL2RA

**Calculated MW**

characterized by a reduction in the amount of IL2RA expressed on the surface of immune cells. This leads to chronic immune suppression KDa

**Application Details**

Immunohistochemistry(Paraffin-embedded Section), 0.5-1 µg/ml, Human, By Heat<br><br>Western blot, 0.1-0.5 µg/ml, Human<br>

**Subcellular Localization**

sc 13946|sc 19628|sc 365511|sc 365912|sc 374034|sc 393326|sc 57297|sc 664|sc 665|sc 666

**Tissue Specificity**

|immunology|adaptive immunity|t cells| <br>immunology|innate immunity|cytokines|interleukins

**Source**

Interleukin-2 receptor subunit alpha;IL-2 receptor subunit alpha;IL-2-RA;IL-2R subunit alpha;IL2-RA;TAC antigen;p55;CD25;IL2RA;

**Protein Name**

Interleukin-2 receptor subunit alpha

**Contents**

Each vial contains 5mg BSA, 0.9mg NaCl, 0.2mg Na<sub>2</sub>HPO<sub>4</sub>, 0.05mg Thimerosal, 0.05mg NaN<sub>3</sub>.

### Immunogen

A synthetic peptide corresponding to a sequence at the N-terminus of human CD25/IL-2sR Alpha (39-57aa MAYKEGTMLNCECKRGFRR).

### Purification

Immunogen affinity purified.

### Cross Reactivity

No cross reactivity with other proteins

### Storage

**At -20°C for one year. After reconstitution, at 4°C for one month. It can also be aliquotted and stored frozen at -20°C for a longer time. Avoid repeated freezing and thawing.**

### Sequence Similarities

Receptor for interleukin-2.

## Anti-CD25/IL-2sR alpha Antibody - Protein Information

**Name** IL2RA

### Function

Receptor for interleukin-2. The receptor is involved in the regulation of immune tolerance by controlling regulatory T cells (TREGs) activity. TREGs suppress the activation and expansion of autoreactive T-cells.

### Cellular Location

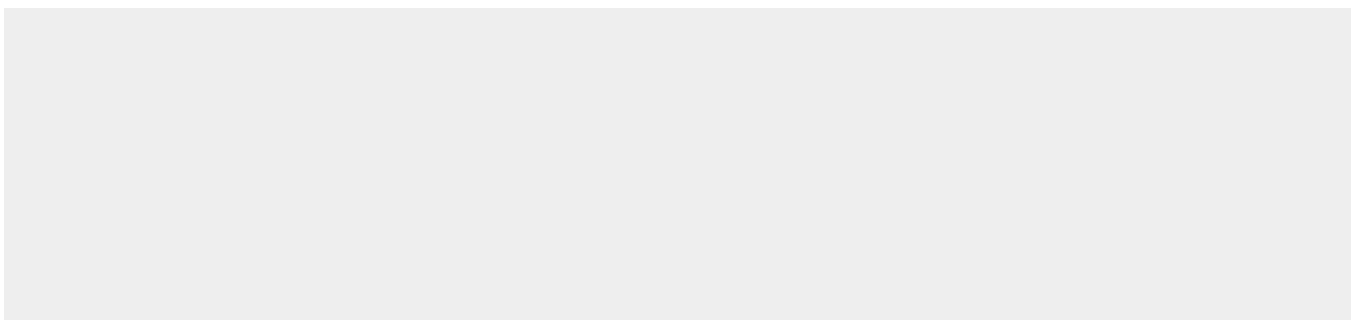
Membrane; Single-pass type I membrane protein.

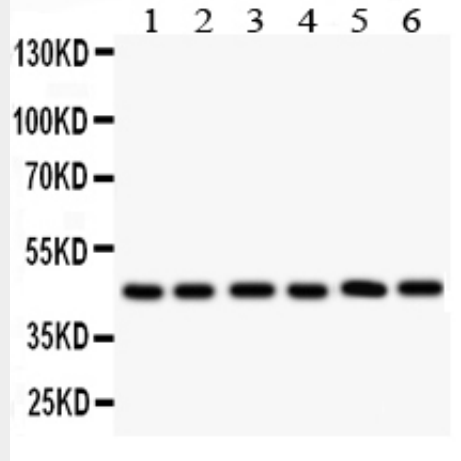
## Anti-CD25/IL-2sR alpha Antibody - Protocols

Provided below are standard protocols that you may find useful for product applications.

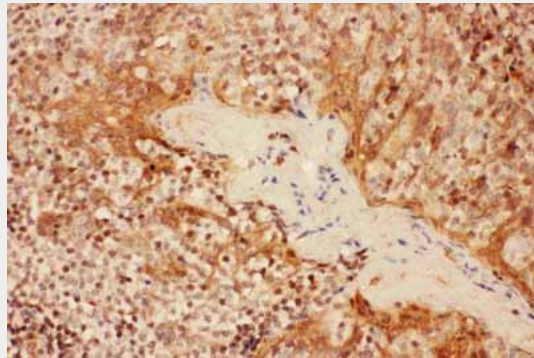
- [Western Blot](#)
- [Blocking Peptides](#)
- [Dot Blot](#)
- [Immunohistochemistry](#)
- [Immunofluorescence](#)
- [Immunoprecipitation](#)
- [Flow Cytometry](#)
- [Cell Culture](#)

## Anti-CD25/IL-2sR alpha Antibody - Images





Anti- CD25/IL-2sR Alpha antibody, ABO11056, Western blotting All lanes: Anti CD25/IL-2sR Alpha (ABO11056) at 0.5ug/ml Lane 1: SMMC Whole Cell Lysate at 40ug Lane 2: A549 Whole Cell Lysate at 40ug Lane 3: JURKAT Whole Cell Lysate at 40ug Lane 4: MCF-7 Whole Cell Lysate at 40ug Lane 5: RAJI Whole Cell Lysate at 40ug Lane 6: PANC Whole Cell Lysate at 40ug Predicted bind size: 31KD Observed bind size: 45KD



Anti- CD25/IL-2sR Alpha antibody, ABO11056, IHC(P) IHC(P): Human Tonsil Tissue

**Anti-CD25/IL-2sR alpha Antibody - Background**

IL2RA(Interleukin 2 receptor, alpha), also called IL2R, IL2R, Alpha Chain or CD25, is a protein that in humans is encoded by the IL2RA gene. The IL2RA gene is mapped on 10p15.1. IL2RA is composed of strand-swapped sushi-like" domains