

**Anti-CXCL1 Antibody**  
**Catalog # ABO11069****Specification**

---

**Anti-CXCL1 Antibody - Product Information**

Application	<b>WB</b>
Primary Accession	<a href="#">P09341</a>
Host	<b>Rabbit</b>
Reactivity	<b>Human</b>
Clonality	<b>Polyclonal</b>
Format	<b>Lyophilized</b>

**Description**

Rabbit IgG polyclonal antibody for Growth-regulated alpha protein(CXCL1) detection. Tested with WB in Human.

**Reconstitution**

Add 0.2ml of distilled water will yield a concentration of 500ug/ml.

**Anti-CXCL1 Antibody - Additional Information**

**Gene ID** 2919

**Other Names**

Growth-regulated alpha protein, C-X-C motif chemokine 1, GRO-alpha(1-73), Melanoma growth stimulatory activity, MGSA, Neutrophil-activating protein 3, NAP-3, GRO-alpha(4-73), GRO-alpha(5-73), GRO-alpha(6-73), CXCL1, GRO, GRO1, GROA, MGSA, SCYB1

**Calculated MW**

11301 MW KDa

**Application Details**

Western blot, 0.1-0.5 µg/ml, Human<br>

**Subcellular Localization**

Secreted.

**Protein Name**

Growth-regulated alpha protein

**Contents**

Each vial contains 5mg BSA, 0.9mg NaCl, 0.2mg Na<sub>2</sub>HPO<sub>4</sub>, 0.05mg Thimerosal, 0.05mg NaN<sub>3</sub>.

**Immunogen**

A synthetic peptide corresponding to a sequence at the C-terminus of human GRO alpha(99-107aa KMLNSDKSN).

**Purification**

Immunogen affinity purified.

**Cross Reactivity**

No cross reactivity with other proteins

**Storage**

**At -20°C for one year. After reconstitution, at 4°C for one month. It can also be aliquotted and stored frozen at -20°C for a longer time. Avoid repeated freezing and thawing.**

**Sequence Similarities**

Belongs to the intercrine alpha (chemokine CxC) family.

**Anti-CXCL1 Antibody - Protein Information**

**Name** CXCL1

**Synonyms** GRO, GRO1, GROA, MGSA, SCYB1

**Function**

Has chemotactic activity for neutrophils. May play a role in inflammation and exerts its effects on endothelial cells in an autocrine fashion. In vitro, the processed forms GRO-alpha(4-73), GRO-alpha(5-73) and GRO-alpha(6-73) show a 30-fold higher chemotactic activity.

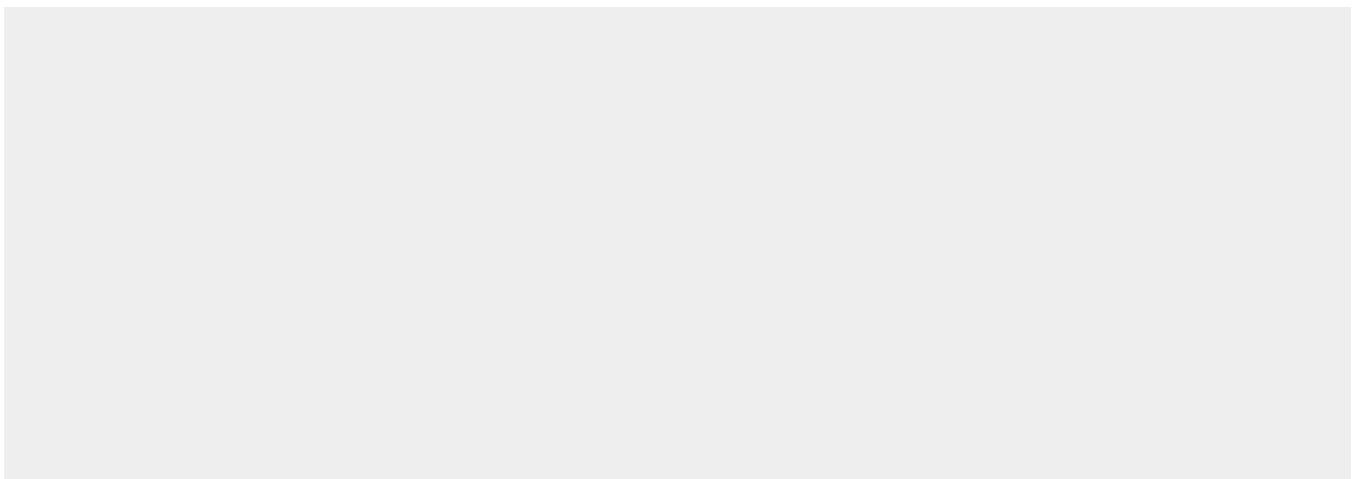
**Cellular Location**

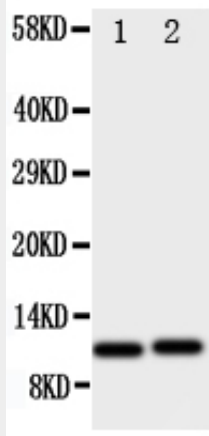
Secreted.

**Anti-CXCL1 Antibody - Protocols**

Provided below are standard protocols that you may find useful for product applications.

- [Western Blot](#)
- [Blocking Peptides](#)
- [Dot Blot](#)
- [Immunohistochemistry](#)
- [Immunofluorescence](#)
- [Immunoprecipitation](#)
- [Flow Cytometry](#)
- [Cell Culture](#)

**Anti-CXCL1 Antibody - Images**



Anti-GRO alpha antibody, ABO11069, Western blotting All lanes: Anti GRO alpha (ABO11069) at 0.5ug/ml Lane 1: HELA Whole Cell Lysate at 40ug Lane 2: JURKAT Whole Cell Lysate at 40ug Predicted bind size: 11KD Observed bind size: 11KD

### Anti-CXCL1 Antibody - Background

CXCL1 (Chemokine, CXC motif, Ligand 1), also called GRO1, SCYB1, GROA or MGSA, is a small cytokine belonging to the CXC chemokine family that was previously called GRO1 oncogene, GROalpha, KC, Neutrophil-activating protein 3 (NAP-3) and melanoma growth stimulating activity, alpha (MSGAlpha-alpha). In humans, this protein is encoded by the CXCL1 gene. The CXCL1 gene is mapped on 4q13.3. CXCL1 is secreted by human melanoma cells, has mitogenic properties and is implicated in melanoma pathogenesis. CXCL1 is expressed by macrophages, neutrophils and epithelial cells, and has neutrophil chemoattractant activity. CXCL1 plays a role in spinal cord development by inhibiting the migration of oligodendrocyte precursors and is involved in the processes of angiogenesis, inflammation, wound healing, and tumorigenesis. Signaling through Cxcr2, Cxcl1 inhibited oligodendrocyte precursor migration. The migrational arrest was rapid, reversible, and concentration dependent, and it reflected enhanced cell/substrate interactions. White matter expression of Cxcl1 was temporospatially regulated. Others contribute to aggressive growth selectivity in the lung. Among the lung metastasis signature genes identified, several, including CXCL1, were functionally validated.