

Anti-SNRPN Antibody
Catalog # ABO11082**Specification**

Anti-SNRPN Antibody - Product Information

Application	WB, IHC-P, ICC
Primary Accession	P63162
Host	Rabbit
Reactivity	Human, Mouse, Rat
Clonality	Polyclonal
Format	Lyophilized

Description

Rabbit IgG polyclonal antibody for Small nuclear ribonucleoprotein-associated protein N(SNRPN) detection. Tested with WB, IHC-P, ICC in Human;Mouse;Rat.

Reconstitution

Add 0.2ml of distilled water will yield a concentration of 500ug/ml.

Anti-SNRPN Antibody - Additional Information

Gene ID 6638

Other Names

Small nuclear ribonucleoprotein-associated protein N, snRNP-N, Sm protein D, Sm-D, Sm protein N, Sm-N, SmN, Tissue-specific-splicing protein, SNRPN, HCERN3, SMN

Calculated MW

24614 MW KDa

Application Details

Immunocytochemistry , 0.5-1 µg/ml, Human, Mouse,
Rat
Immunohistochemistry(Paraffin-embedded Section), 0.5-1 µg/ml, Human, Rat, Mouse, By
Heat
Western blot, 0.1-0.5 µg/ml, Human, Rat, Mouse

Subcellular Localization

Nucleus.

Tissue Specificity

Expressed in brain and lymphoblasts. .

Protein Name

Small nuclear ribonucleoprotein-associated protein N(snRNP-N)

Contents

Each vial contains 5mg BSA, 0.9mg NaCl, 0.2mg Na₂HPO₄, 0.05mg Thimerosal, 0.05mg NaN₃.

Immunogen

A synthetic peptide corresponding to a sequence at the N-terminus of human SNRPN(31-48aa FKAFDKHMNLILCDCDEF), identical to the related rat and mouse sequences.

Purification

Immunogen affinity purified.

Cross Reactivity

No cross reactivity with other proteins

Storage

At -20°C for one year. After reconstitution, at 4°C for one month. It can also be aliquotted and stored frozen at -20°C for a longer time. Avoid repeated freezing and thawing.

Anti-SNRPN Antibody - Protein Information

Name SNRPN

Synonyms HCERN3, SMN

Function

May be involved in tissue-specific alternative RNA processing events.

Cellular Location

Nucleus.

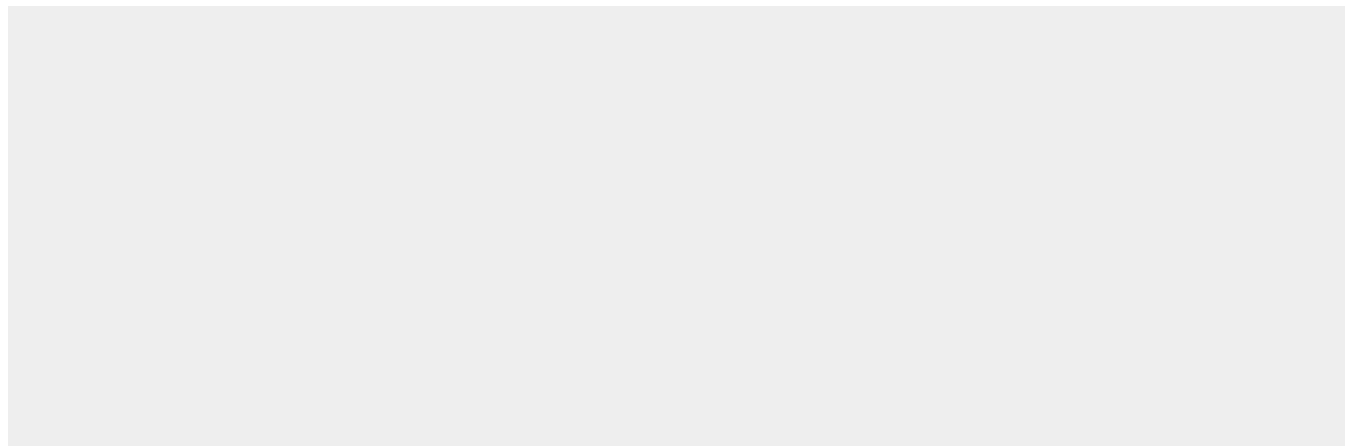
Tissue Location

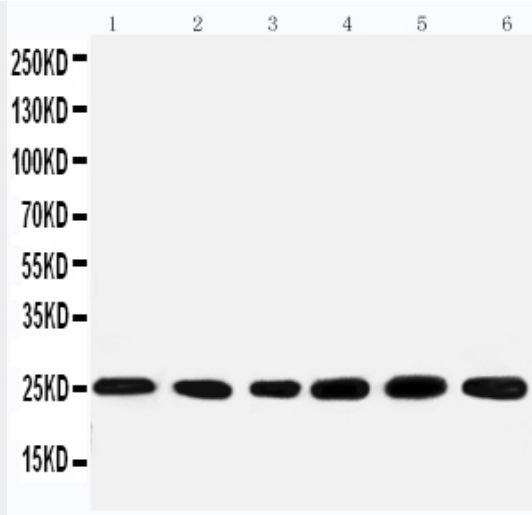
Expressed in brain and lymphoblasts.

Anti-SNRPN Antibody - Protocols

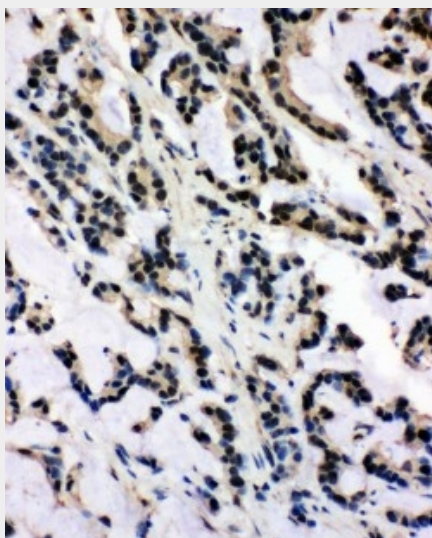
Provided below are standard protocols that you may find useful for product applications.

- [Western Blot](#)
- [Blocking Peptides](#)
- [Dot Blot](#)
- [Immunohistochemistry](#)
- [Immunofluorescence](#)
- [Immunoprecipitation](#)
- [Flow Cytometry](#)
- [Cell Culture](#)

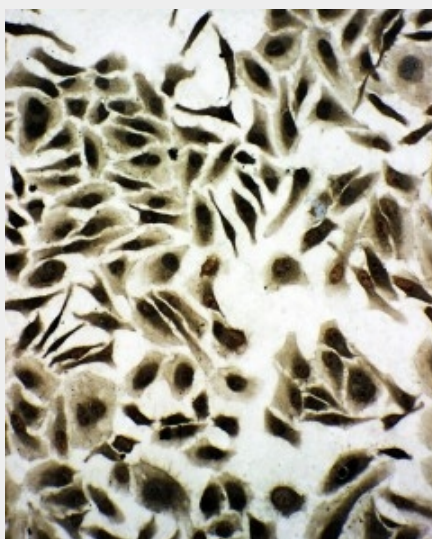
Anti-SNRPN Antibody - Images



Anti-SNRPN antibody, ABO11082, Western blotting
Lane 1: Rat kidney Tissue Lysate Lane 2: U87 Cell Lysate Lane 3: U87 Cell Lysate Lane 4: HELA Cell Lysate Lane 5: HMY Cell Lysate Lane 6: NEUR Cell Lysate



Anti-SNRPN antibody, ABO11082, IHC(P)IHC(P): Human Intestinal Cancer Tissue



Anti-SNRPN antibody, ABO11082, ICCICC: HELA Cell

Anti-SNRPN Antibody - Background

SNRPN(Small Nuclear Ribonucleoprotein Polypeptide N), also called SMN, is a bicistronic imprinted gene that encodes 2 polypeptides, the SmN splicing factor, which is involved in RNA processing, and the SNRPN upstream reading frame(SNURF) polypeptide. The protein encoded by this gene is one polypeptide of a small nuclear ribonucleoprotein complex and belongs to the snRNP SMB/SMN family. SNRPN also encodes a long alternatively spliced transcript containing several small nucleolar RNAs(snoRNAs) and extends downstream to partially overlap the UBE3A gene in the antisense orientation. PWS arises from loss of function of genes in this region expressed exclusively from the paternal chromosome, suggesting that SNRPN may play a role in its etiology. The SNRPN gene is mapped on 15q11.2. Analysis of maternal DNA and of SNRPN cDNA confirmed that the maternal allele is not expressed in fetal brain and heart. Deletions in the transcription unit of the imprinted SNRPN gene occur in patients who have PWS or Angelman syndrome because of a parental imprint switch failure in this chromosomal domain.