

Anti-TFPI Antibody
Catalog # ABO11107**Specification**

Anti-TFPI Antibody - Product Information

Application	WB, IHC-P
Primary Accession	P10646
Host	Rabbit
Reactivity	Human
Clonality	Polyclonal
Format	Lyophilized

Description

Rabbit IgG polyclonal antibody for Tissue factor pathway inhibitor(TFPI) detection. Tested with WB, IHC-P in Human.

Reconstitution

Add 0.2ml of distilled water will yield a concentration of 500ug/ml.

Anti-TFPI Antibody - Additional Information

Gene ID 7035

Other Names

Tissue factor pathway inhibitor, TFPI, Extrinsic pathway inhibitor, EPI, Lipoprotein-associated coagulation inhibitor, LACI, TFPI, LACI, TFPI1

Calculated MW

35015 MW KDa

Application Details

Immunohistochemistry(Paraffin-embedded Section), 0.5-1 µg/ml, Human, By Heat
Western blot, 0.1-0.5 µg/ml, Human

Subcellular Localization

Isoform Alpha: Secreted.

Tissue Specificity

Mostly in endothelial cells.

Protein Name

Tissue factor pathway inhibitor

Contents

Each vial contains 5mg BSA, 0.9mg NaCl, 0.2mg Na₂HPO₄, 0.05mg Thimerosal, 0.05mg NaN₃.

Immunogen

A synthetic peptide corresponding to a sequence at the N-terminus of human TFPI(261-280aa QECLRACKKGFIQRISKGGL).

Purification

Immunogen affinity purified.

Cross Reactivity

No cross reactivity with other proteins

Storage

At -20°C for one year. After reconstitution, at 4°C for one month. It can also be aliquotted and stored frozen at -20°C for a longer time. Avoid repeated freezing and thawing.

Sequence Similarities

Contains 3 BPTI/Kunitz inhibitor domains.

Anti-TFPI Antibody - Protein Information**Name** TFPI

Synonyms LACI, TFPI1

Function

Inhibits factor X (X(a)) directly and, in a Xa-dependent way, inhibits VIIa/tissue factor activity, presumably by forming a quaternary Xa/LACI/VIIa/TF complex. It possesses an antithrombotic action and also the ability to associate with lipoproteins in plasma.

Cellular Location

[Isoform Alpha]: Secreted.

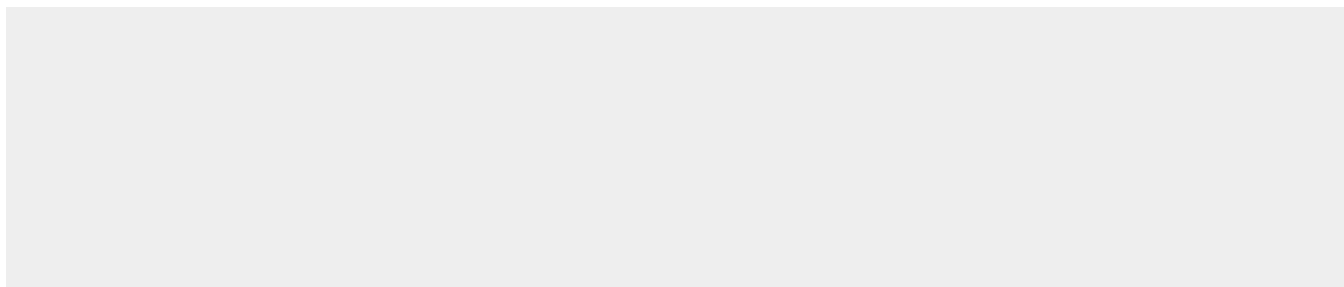
Tissue Location

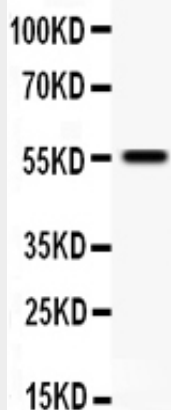
Mostly in endothelial cells.

Anti-TFPI Antibody - Protocols

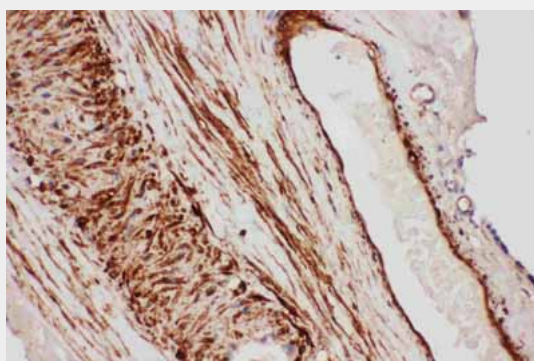
Provided below are standard protocols that you may find useful for product applications.

- [Western Blot](#)
- [Blocking Peptides](#)
- [Dot Blot](#)
- [Immunohistochemistry](#)
- [Immunofluorescence](#)
- [Immunoprecipitation](#)
- [Flow Cytometry](#)
- [Cell Culture](#)

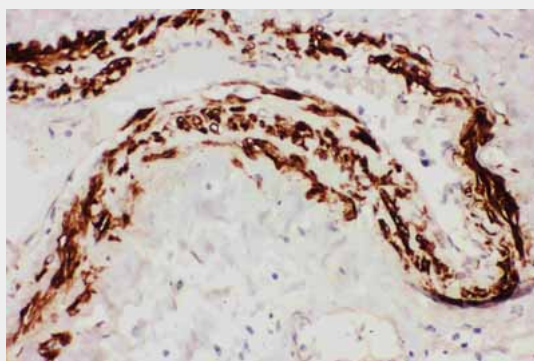
Anti-TFPI Antibody - Images



Anti- TFPI antibody, ABO11107, Western blotting All lanes: Anti TFPI (ABO11107) at 0.5ug/ml WB: SMMC Whole Cell Lysate at 40ug Predicted bind size: 26KD Observed bind size: 55KD



Anti- TFPI antibody, ABO11107, IHC(P) IHC(P): Human Placenta Tissue



Anti- TFPI antibody, ABO11107, IHC(P) IHC(P): Human Lung Cancer Tissue

Anti-TFPI Antibody - Background

TFPI (Tissue factor pathway inhibitor) also known as EPI, LACI, TFI and TFPT1 is a single-chain polypeptide which can reversibly inhibit Factor Xa (Xa) and Thrombin (Factor IIa). While Xa is inhibited, the Xa-TFPI complex can subsequently also inhibit the FVIIa-tissue factor complex. TFPI contributes significantly to the inhibition of Xa in vivo, despite being present at concentrations of only 2.5 nM. The gene for TFPI is located on chromosome 2q31-q32.1, and has nine exons which span 70 kb. TFPI has a relative molecular mass of 34,000 to 40,000 depending on the degree of proteolysis of the C-terminal region.