

Anti-HSPB2 Antibody
Catalog # ABO11110**Specification**

Anti-HSPB2 Antibody - Product Information

| | |
|-------------------|------------------------|
| Application | WB, IHC-F, ICC |
| Primary Accession | Q16082 |
| Host | Rabbit |
| Reactivity | Human, Mouse, Rat |
| Clonality | Polyclonal |
| Format | Lyophilized |

Description

Rabbit IgG polyclonal antibody for Heat shock protein beta-2(HSPB2) detection. Tested with WB, IHC-F, ICC in Human;Mouse;Rat.

Reconstitution

Add 0.2ml of distilled water will yield a concentration of 500ug/ml.

Anti-HSPB2 Antibody - Additional Information

Gene ID 3316

Other Names

Heat shock protein beta-2, HspB2, DMPK-binding protein, MKBP, HSPB2

Calculated MW

20233 MW KDa

Application Details

Western blot, 0.1-0.5 µg/ml, Human, Rat, Mouse
Immunohistochemistry(Frozen Section), 0.5-1 µg/ml, Rat, Human, Mouse
Immunocytochemistry , 0.5-1 µg/ml, Human, Mouse, Rat

Subcellular Localization

Cytoplasm . Nucleus . Localizes to nuclear foci.

Tissue Specificity

Expressed preferentially in skeletal muscle and heart but not in the lens.

Protein Name

Heat shock protein beta-2(HspB2)

Contents

Each vial contains 5mg BSA, 0.9mg NaCl, 0.2mg Na₂HPO₄, 0.05mg Thimerosal, 0.05mg NaN₃.

Immunogen

A synthetic peptide corresponding to a sequence in the middle region of human HSPB2(102-118aa RHPQRLDRHGFVSREFC), identical to the related rat and mouse sequences.

Purification

Immunogen affinity purified.

Cross Reactivity

No cross reactivity with other proteins

Storage

At -20°C for one year. After reconstitution, at 4°C for one month. It can also be aliquotted and stored frozen at -20°C for a longer time. Avoid repeated freezing and thawing.

Sequence Similarities

Belongs to the small heat shock protein (HSP20) family.

Anti-HSPB2 Antibody - Protein Information

Name HSPB2

Function

May regulate the kinase DMPK.

Cellular Location

Cytoplasm. Nucleus. Note=Localizes to nuclear foci

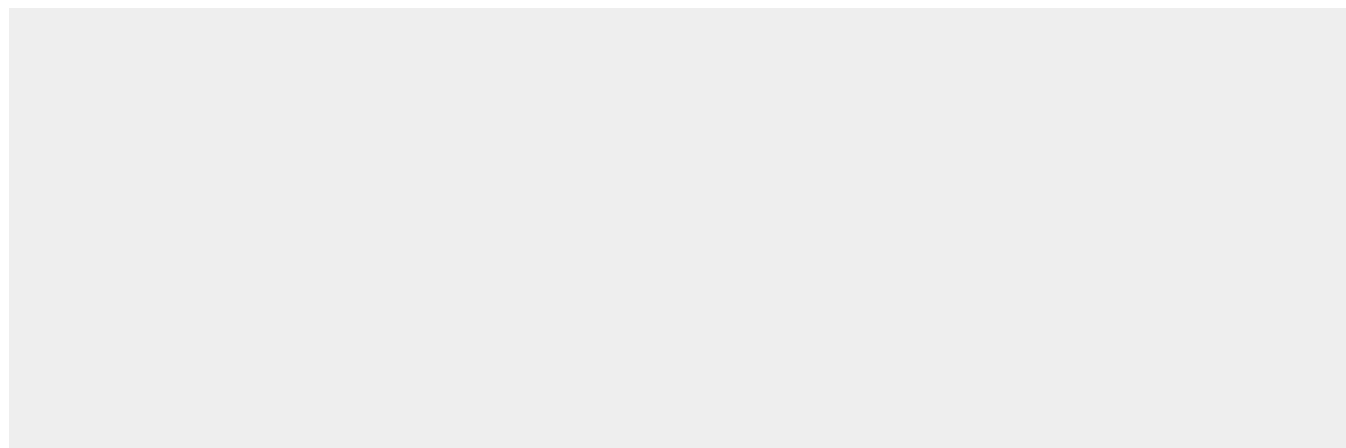
Tissue Location

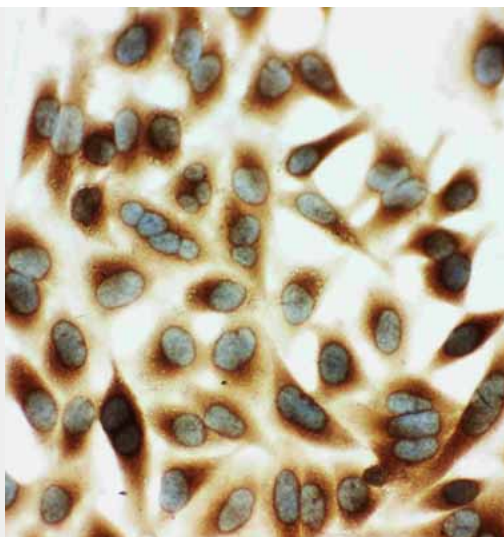
Expressed preferentially in skeletal muscle and heart but not in the lens

Anti-HSPB2 Antibody - Protocols

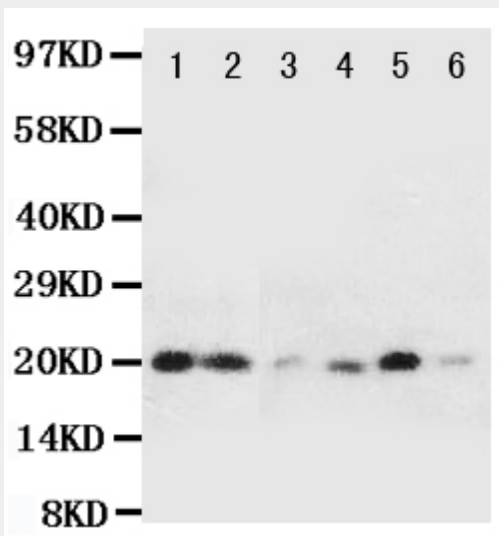
Provided below are standard protocols that you may find useful for product applications.

- [Western Blot](#)
- [Blocking Peptides](#)
- [Dot Blot](#)
- [Immunohistochemistry](#)
- [Immunofluorescence](#)
- [Immunoprecipitation](#)
- [Flow Cytometry](#)
- [Cell Culture](#)

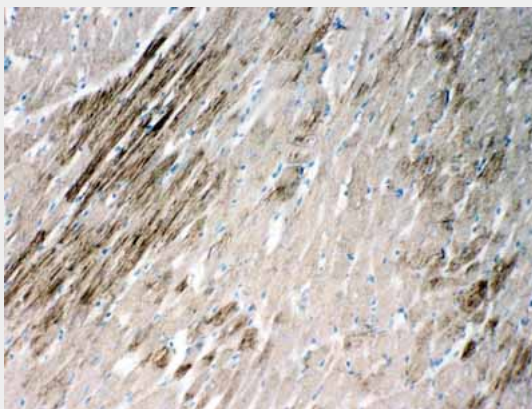
Anti-HSPB2 Antibody - Images



Anti-HSPB2 antibody, ABO11110, ICC/IF: HELA Cell



Anti-HSPB2 antibody, ABO11110, Western blotting
All lanes: Anti HSPB2 (ABO11110) at 0.5ug/ml
Lane 1: Rat Liver Tissue Lysate at 50ug
Lane 2: Rat Spleen Tissue Lysate at 50ug
Lane 3: HELA Whole Cell Lysate at 40ug
Lane 4: COLO320 Whole Cell Lysate at 40ug
Lane 5: HT1080 Whole Cell Lysate at 40ug
Lane 6: MCF-7 Whole Cell Lysate at 40ug
Predicted bind size: 20KD
Observed bind size: 20KD



Anti-HSPB2 antibody, ABO11110, IHC(F)IHC(F): Rat Cardiac Muscle Tissue

Anti-HSPB2 Antibody - Background

Alpha-B-crystallin is a member of the alpha-crystallin/small heat-shock protein(HSP) family and under various neuropathologic conditions accumulates in reactive astrocytes and degenerating neurons. In the 5-prime flanking region of the CRYAB gene on 11q22-q23, where a constitutive DNaseI hypersensitive site is located, Iwaki et al.(1997) identified a gene transcribed in the opposite direction. Analysis of its mRNA structure by RT-PCR and 5-prime/3-prime RACE revealed that this gene is composed of 2 exons and encodes a new member of the alpha-crystallin/hsp family. They termed the gene HSPB2. Iwaki et al.(1997) also determined the complete genomic structure of the rat homolog of HSPB2. Southern blot analysis demonstrated that HSPB2 is expressed preferentially in skeletal muscle and heart but not in the lens, while the neighboring CRYAB gene is highly expressed in all 3 tissues. The 2 related genes are arranged in a head-to-head manner with an intergenic sequence of less than 1 kb, raising a possibility of shared regulatory elements for their expression.