

Anti-CrkL Antibody
Catalog # ABO11116**Specification**

Anti-CrkL Antibody - Product Information

Application	WB
Primary Accession	P46109
Host	Rabbit
Reactivity	Human, Mouse, Rat
Clonality	Polyclonal
Format	Lyophilized

Description

Rabbit IgG polyclonal antibody for Crk-like protein(CRKL) detection. Tested with WB in Human;Mouse;Rat.

Reconstitution

Add 0.2ml of distilled water will yield a concentration of 500ug/ml.

Anti-CrkL Antibody - Additional Information

Gene ID 1399

Other Names

Crk-like protein, CRKL

Calculated MW

33777 MW KDa

Application Details

Western blot, 0.1-0.5 µg/ml, Human, Rat, Mouse

Protein Name

Crk-like protein

Contents

Each vial contains 5mg BSA, 0.9mg NaCl, 0.2mg Na₂HPO₄, 0.05mg Thimerosal, 0.05mg NaN₃.

Immunogen

A synthetic peptide corresponding to a sequence at the C-terminus of human CrkL(286-303aa FPFTHVKIFDPQNPDENE), different from the related mouse and rat sequences by one amino acid.

Purification

Immunogen affinity purified.

Cross Reactivity

No cross reactivity with other proteins

Storage

**At -20°C for one year. After r°Constitution,
at 4°C for one month. It°Can also be**

aliquotted and stored frozen at -20°C for a longer time.Avoid repeated freezing and thawing.

Sequence Similarities

Belongs to the CRK family.

Anti-CrkL Antibody - Protein Information

Name CRKL

Function

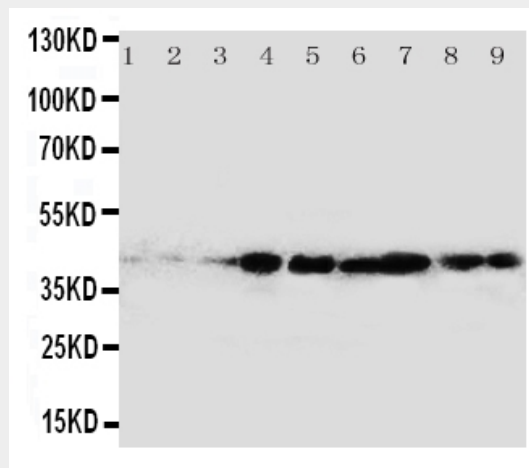
May mediate the transduction of intracellular signals.

Anti-CrkL Antibody - Protocols

Provided below are standard protocols that you may find useful for product applications.

- [Western Blot](#)
- [Blocking Peptides](#)
- [Dot Blot](#)
- [Immunohistochemistry](#)
- [Immunofluorescence](#)
- [Immunoprecipitation](#)
- [Flow Cytometry](#)
- [Cell Culture](#)

Anti-CrkL Antibody - Images



Anti-CrkL antibody, ABO11116, Western blotting
All lanes: Anti CrkL (ABO11116) at 0.5ug/ml
Lane 1: Rat Spleen Tissue Lysate at 50ug
Lane 2: Rat Ovary Tissue Lysate at 50ug
Lane 3: Rat Testis Tissue Lysate at 50ug
Lane 4: MM231 Whole Cell Lysate at 40ug
Lane 5: A431 Whole Cell Lysate at 40ug
Lane 6: MCF-7 Whole Cell Lysate at 40ug
Lane 7: MM231 Whole Cell Lysate at 40ug
Lane 8: MM543 Whole Cell Lysate at 40ug
Lane 9: JURKAT Whole Cell Lysate at 40ug
Predicted bind size: 42KD
Observed bind size: 42KD

Anti-CrkL Antibody - Background

CRKL(v-crk sarcoma virus CT10 oncogene homolog(avian)-like) also called ONCOGENE CRKL, encodes a 303-amino acid polypeptide with a predicted molecular mass of 36 kD. While CRKL is not the human homolog of CRK, it is similar to protein-tyrosine kinases with SH2 and SH3(src homology) domains. By fluorescence in situ hybridization, the CRKL gene is localized to chromosome 22q11, centromeric of the chronic myelogenous leukemia breakpoint region. Senechal et al.(1996) showed that CRKL becomes phosphorylated when overexpressed, activates Ras-dependent and JNK pathways, and transforms fibroblasts. The authors also found CRKL to be a substrate for the BCR-ABL tyrosine kinase, leading them to conclude that CRKL is a tyrosine kinase and an oncogene. Crkl was required for normal cellular responses to Fgf8, including survival and migration, Erk activation, and target gene expression.