

Anti-Kallikrein 10 Antibody
Catalog # ABO11129**Specification**

Anti-Kallikrein 10 Antibody - Product Information

Application	WB
Primary Accession	O43240
Host	Rabbit
Reactivity	Human
Clonality	Polyclonal
Format	Lyophilized

Description

Rabbit IgG polyclonal antibody for Kallikrein-10(KLK10) detection. Tested with WB in Human.

Reconstitution

Add 0.2ml of distilled water will yield a concentration of 500ug/ml.

Anti-Kallikrein 10 Antibody - Additional Information

Gene ID 5655

Other Names

Kallikrein-10, 3.4.21.-, Normal epithelial cell-specific 1, Protease serine-like 1, KLK10, NES1, PRSSL1

Calculated MW

30170 MW KDa

Application Details

Western blot, 0.1-0.5 µg/ml, Human

Subcellular Localization

Secreted .

Tissue Specificity

Expressed in breast, ovary and prostate.

Protein Name

Kallikrein-10

Contents

Each vial contains 5mg BSA, 0.9mg NaCl, 0.2mg Na₂HPO₄, 0.05mg Thimerosal, 0.05mg NaN₃.

Immunogen

A synthetic peptide corresponding to a sequence at the C-terminus of human Kallikrein 10(252-265aa SAQHPAVYTQICKY).

Purification

Immunogen affinity purified.

Cross Reactivity

No cross reactivity with other proteins

Storage

At -20°C for one year. After reconstitution, at 4°C for one month. It can also be aliquotted and stored frozen at -20°C for a longer time. Avoid repeated freezing and thawing.

Sequence Similarities

Belongs to the peptidase S1 family. Kallikrein subfamily.

Anti-Kallikrein 10 Antibody - Protein Information

Name KLK10

Synonyms NES1, PRSSL1

Function

Has a tumor-suppressor role for NES1 in breast and prostate cancer.

Cellular Location

Secreted.

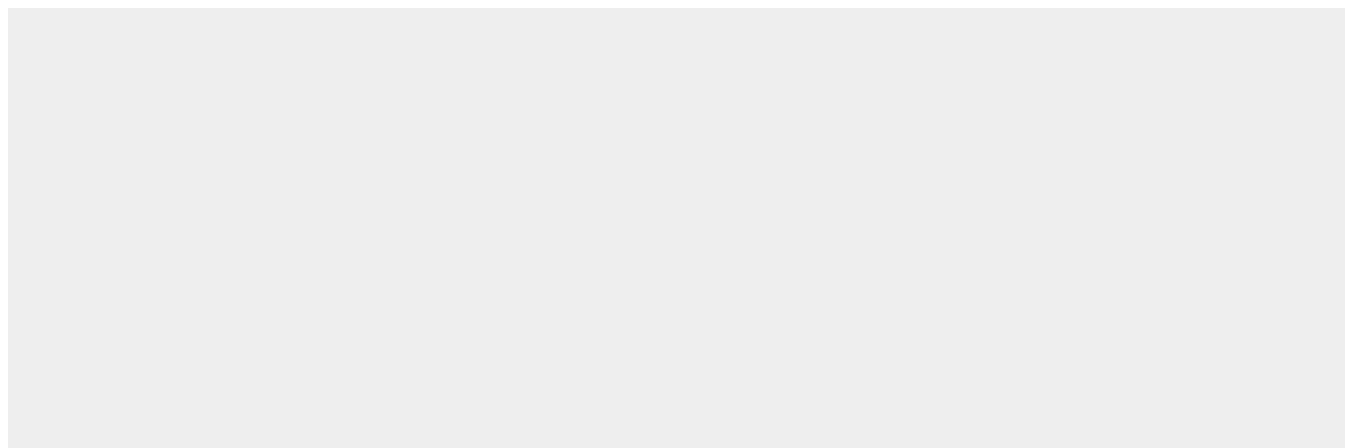
Tissue Location

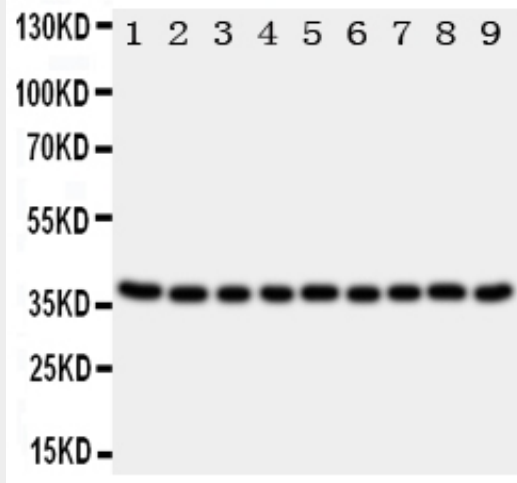
Expressed in breast, ovary and prostate.

Anti-Kallikrein 10 Antibody - Protocols

Provided below are standard protocols that you may find useful for product applications.

- [Western Blot](#)
- [Blocking Peptides](#)
- [Dot Blot](#)
- [Immunohistochemistry](#)
- [Immunofluorescence](#)
- [Immunoprecipitation](#)
- [Flow Cytometry](#)
- [Cell Culture](#)

Anti-Kallikrein 10 Antibody - Images



Anti-Kallikrein 10 antibody, ABO11129, Western blotting All lanes: Anti Kallikrein 10 (ABO11129) at 0.5ug/ml
Lane 1: Rat Ovary Tissue Lysate at 50ug
Lane 2: Rat Testis Tissue Lysate at 50ug
Lane 3: Rat Spleen Tissue Lysate at 50ug
Lane 4: Rat Liver Tissue Lysate at 50ug
Lane 5: 22RV Whole Cell Lysate at 40ug
Lane 6: SROV Whole Cell Lysate at 40ug
Lane 7: HELA Whole Cell Lysate at 40ug
Lane 8: MCF-7 Whole Cell Lysate at 40ug
Lane 9: MM231 Whole Cell Lysate at 40ug
Predicted bind size: 37KD
Observed bind size: 37KD

Anti-Kallikrein 10 Antibody - Background

KLK10(kallikrein-related peptidase 10) also known as kallikrein 10, PRSSL1 or NES1, belongs to the kallikrein subfamily of serine proteases, which are involved in a variety of enzymatic processes. Its encoded protein is secreted and may play a role in suppression of tumorigenesis in breast and prostate cancers. KLK10 also contains 12 conserved cysteines in its protease domain that are expected to form 6 disulfide bonds, as in other serine proteases. RT-PCR detected variable levels of KLK10 expression in nearly all of the 35 adult and fetal tissues examined. The KLK10 gene contains 6 exons, the first of which is noncoding. By fluorescence in situ hybridization, Polikoff et al.(1997) mapped the PRSSL1 gene to 19q13.3. By genomic sequence analysis, Gan et al.(2000) mapped the KLK10 gene within the KLK gene cluster on chromosome 19q13. This cluster includes 13 KLK genes and 5 pseudogenes.