

Anti-PTCH2 Antibody
Catalog # ABO11167**Specification**

Anti-PTCH2 Antibody - Product Information

Application	WB
Primary Accession	Q9Y6C5
Host	Rabbit
Reactivity	Human, Mouse
Clonality	Polyclonal
Format	Lyophilized

Description

Rabbit IgG polyclonal antibody for Protein patched homolog 2(PTCH2) detection. Tested with WB in Human;Mouse.

Reconstitution

Add 0.2ml of distilled water will yield a concentration of 500ug/ml.

Anti-PTCH2 Antibody - Additional Information

Gene ID 8643

Other Names

Protein patched homolog 2, PTC2, PTCH2

Calculated MW

130544 MW KDa

Application Details

Western blot, 0.1-0.5 µg/ml, Human, Mouse

Subcellular Localization

Membrane; Multi-pass membrane protein.

Protein Name

Protein patched homolog 2(PTC2)

Contents

Each vial contains 5mg BSA, 0.9mg NaCl, 0.2mg Na₂HPO₄, 0.05mg Thimerosal, 0.05mg NaN₃.

Immunogen

A synthetic peptide corresponding to a sequence at the C-terminus of human PTCH2(885-901aa WLHDKYDTTGENLRIPP), different from the related mouse sequence by one amino acid.

Purification

Immunogen affinity purified.

Cross Reactivity

No cross reactivity with other proteins

Storage

At -20°C for one year. After reconstitution, at 4°C for one month. It can also be aliquotted and stored frozen at -20°C for a longer time. Avoid repeated freezing and thawing.

Sequence Similarities

Belongs to the patched family.

Anti-PTCH2 Antibody - Protein Information**Name** PTCH2**Function**

Plays a role in the control of cellular growth (PubMed: [18285427](http://www.uniprot.org/citations/18285427)). May have a role in epidermal development. May act as a receptor for Sonic hedgehog (SHH).

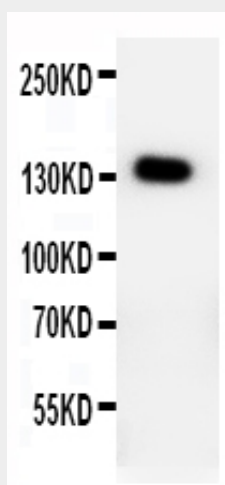
Cellular Location

Membrane; Multi-pass membrane protein.

Anti-PTCH2 Antibody - Protocols

Provided below are standard protocols that you may find useful for product applications.

- [Western Blot](#)
- [Blocking Peptides](#)
- [Dot Blot](#)
- [Immunohistochemistry](#)
- [Immunofluorescence](#)
- [Immunoprecipitation](#)
- [Flow Cytometry](#)
- [Cell Culture](#)

Anti-PTCH2 Antibody - Images

Anti-PTCH2 antibody, ABO11167, Western blottingWB: HELA Cell Lysate

Anti-PTCH2 Antibody - Background

PTCH2(patchd 2), also known as PTC2, encodes a 1,203-amino acid putative transmembrane protein that is highly homologous to the PTCH product. The Patched-hedgehog signaling pathway is involved in establishing segment polarity and the anterior-posterior orientation of a number of developing appendages. The pathway is conserved from fly to vertebrates and has been implicated in a number of human neoplasms and developmental syndromes. Mutations in the human Patched gene are the basis of the nevoid basal cell carcinoma syndrome. With age, homozygous mutant male mice developed skin lesions consisting of alopecia and epidermal hyperplasia, suggesting a role for Ptch2 in adult epidermal homeostasis via Shh signaling.