

Anti-splicing Factor 1 Antibody
Catalog # ABO11171**Specification**

Anti-splicing Factor 1 Antibody - Product Information

Application	WB, IHC-P, IHC-F, ICC
Primary Accession	Q15637
Host	Rabbit
Reactivity	Human, Mouse, Rat
Clonality	Polyclonal
Format	Lyophilized

Description

Rabbit IgG polyclonal antibody for Splicing factor 1(SF1) detection. Tested with WB, IHC-P, IHC-F, ICC in Human;Mouse;Rat.

Reconstitution

Add 0.2ml of distilled water will yield a concentration of 500ug/ml.

Anti-splicing Factor 1 Antibody - Additional Information

Gene ID 7536

Other Names

Splicing factor 1, Mammalian branch point-binding protein, BBP, mBBP, Transcription factor ZFM1, Zinc finger gene in MEN1 locus, Zinc finger protein 162, SF1, ZFM1, ZNF162

Calculated MW

68330 MW KDa

Application Details

Immunocytochemistry , 0.5-1 µg/ml, Human, Mouse, Rat
Immunohistochemistry(Frozen Section), 0.5-1 µg/ml, Rat, Human, Mouse
Immunohistochemistry(Paraffin-embedded Section), 0.5-1 µg/ml, Human, Rat, Mouse, By Heat
Western blot, 0.1-0.5 µg/ml, Human, Rat, Mouse

Subcellular Localization

Nucleus.

Tissue Specificity

Detected in lung, ovary, adrenal gland, colon, kidney, muscle, pancreas, thyroid, placenta, brain, liver and heart. .

Protein Name

Splicing factor 1

Contents

Each vial contains 5mg BSA, 0.9mg NaCl, 0.2mg Na₂HPO₄, 0.05mg Thimerosal, 0.05mg NaN₃.

Immunogen

A synthetic peptide corresponding to a sequence at the N-terminus of human splicing factor 1(11-30aa DFPSKKRKRSRWNQDTMEQK), identical to the related rat and mouse sequences.

Purification

Immunogen affinity purified.

Cross Reactivity

No cross reactivity with other proteins

Storage

At -20°C for one year. After r°Constitution, at 4°C for one month. It°Can also be aliquotted and stored frozen at -20°C for a longer time.Avoid repeated freezing and thawing.

Sequence Similarities

Belongs to the BBP/SF1 family.

Anti-splicing Factor 1 Antibody - Protein Information

Name SF1

Synonyms ZFM1, ZNF162

Function

Necessary for the ATP-dependent first step of spliceosome assembly. Binds to the intron branch point sequence (BPS) 5'-UACUAAC-3' of the pre-mRNA. May act as transcription repressor.

Cellular Location

Nucleus.

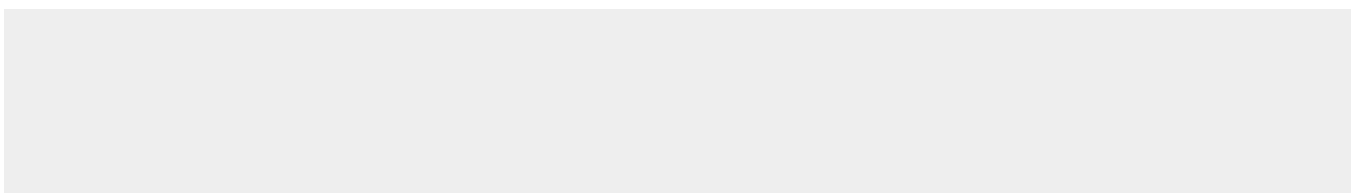
Tissue Location

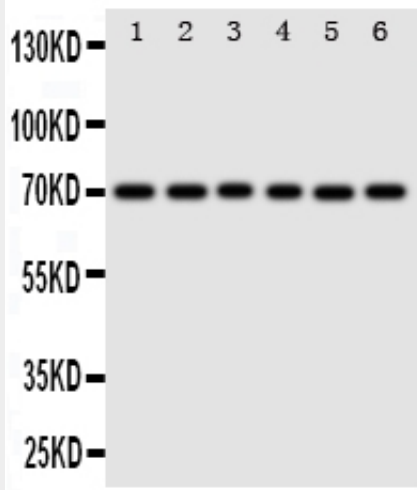
Detected in lung, ovary, adrenal gland, colon, kidney, muscle, pancreas, thyroid, placenta, brain, liver and heart

Anti-splicing Factor 1 Antibody - Protocols

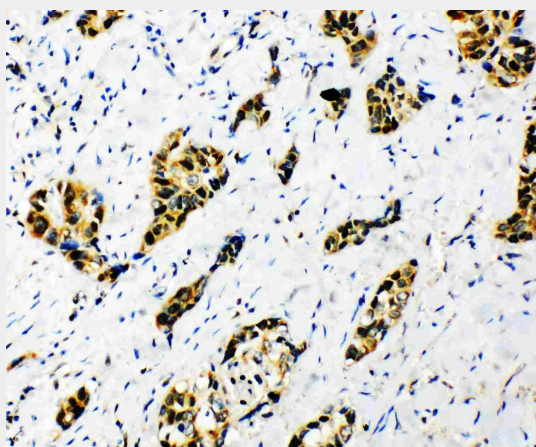
Provided below are standard protocols that you may find useful for product applications.

- [Western Blot](#)
- [Blocking Peptides](#)
- [Dot Blot](#)
- [Immunohistochemistry](#)
- [Immunofluorescence](#)
- [Immunoprecipitation](#)
- [Flow Cytometry](#)
- [Cell Culture](#)

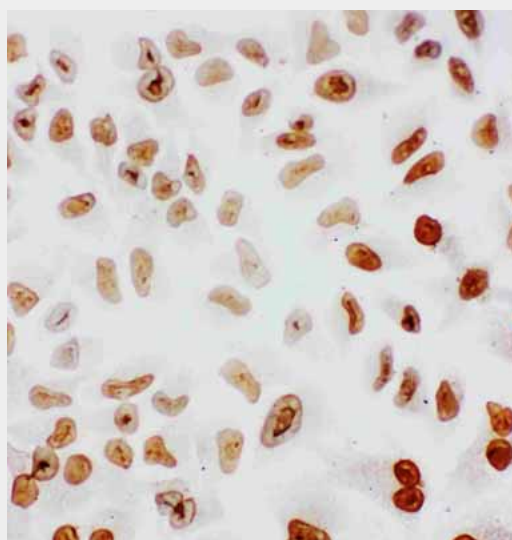
Anti-splicing Factor 1 Antibody - Images



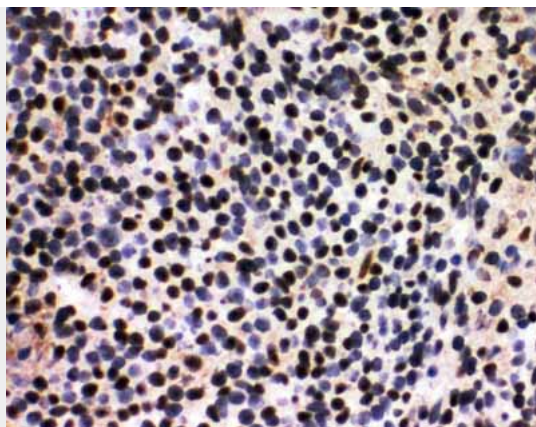
Anti-splicing factor 1 antibody, ABO11171, Western blotting All lanes: Anti splicing factor 1 (ABO11171) at 0.5ug/ml
Lane 1: Rat Spleen Tissue Lysate at 50ug
Lane 2: Rat Liver Tissue Lysate at 50ug
Lane 3: PANC Whole Cell Lysate at 40ug
Lane 4: COLO320 Whole Cell Lysate at 40ug
Lane 5: SW620 Whole Cell Lysate at 40ug
Lane 6: SKOV Whole Cell Lysate at 40ug
Predicted bind size: 52KD
Observed bind size: 70KD



Anti-splicing factor 1 antibody, ABO11171, IHC(P) IHC(P): Human Lung Cancer Tissue



Anti-splicing factor 1 antibody, ABO11171, ICC ICC: HELA Cell



Anti-splicing factor 1 antibody, ABO11171, IHC(F)IHC(F): Rat Spleen Tissue

Anti-splicing Factor 1 Antibody - Background

SF1(splicing factor 1), also known as zinc finger protein 162(ZFM162), ZNF162, Transcription factor ZFM1, ZFM1, D11S636, Mammalian branch point-binding protein(BBP, mBBP), Zinc finger gene in MEN1 locus, is a protein that in humans is encoded by the SF1 gene. It is a predicted 623-amino acid protein. RT-PCR was used to show expression in the thyroid gland, pancreas, adrenal gland, and ovary. All of the ZNF162 isoforms contain a KH domain, a sequence motif present in proteins playing a major role in regulating cellular RNA metabolism.