

Anti-SP4 Antibody
Catalog # ABO11172**Specification**

Anti-SP4 Antibody - Product Information

Application	WB
Primary Accession	Q02446
Host	Rabbit
Reactivity	Human, Mouse, Rat
Clonality	Polyclonal
Format	Lyophilized

Description

Rabbit IgG polyclonal antibody for Transcription factor Sp4(SP4) detection. Tested with WB in Human;Mouse;Rat.

Reconstitution

Add 0.2ml of distilled water will yield a concentration of 500ug/ml.

Anti-SP4 Antibody - Additional Information

Gene ID 6671

Other Names

Transcription factor Sp4, SPR-1, SP4

Calculated MW

81985 MW KDa

Application Details

Western blot, 0.1-0.5 µg/ml, Human, Rat, Mouse

Subcellular Localization

Nucleus.

Tissue Specificity

Abundant in brain.

Protein Name

Transcription factor Sp4

Contents

Each vial contains 5mg BSA, 0.9mg NaCl, 0.2mg Na₂HPO₄, 0.05mg Thimerosal, 0.05mg NaN₃.

Immunogen

A synthetic peptide corresponding to a sequence at the N-terminus of human SP4 (29-44aa ENNNKKPKTSGSQDSQ), identical to the related rat sequence, and different from the related mouse sequence by one amino acid.

Purification

Immunogen affinity purified.

Cross Reactivity

No cross reactivity with other proteins

Storage

At -20°C for one year. After reconstitution, at 4°C for one month. It can also be aliquotted and stored frozen at -20°C for a longer time. Avoid repeated freezing and thawing.

Sequence Similarities

Belongs to the Sp1 C2H2-type zinc-finger protein family.

Anti-SP4 Antibody - Protein Information**Name** SP4**Function**

Binds to GT and GC boxes promoters elements. Probable transcriptional activator.

Cellular Location

Nucleus.

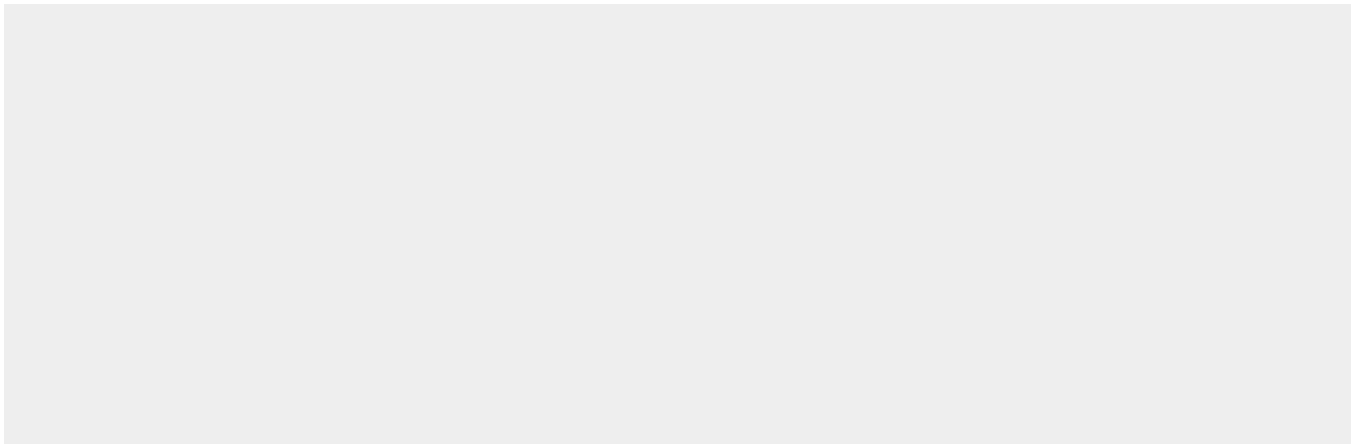
Tissue Location

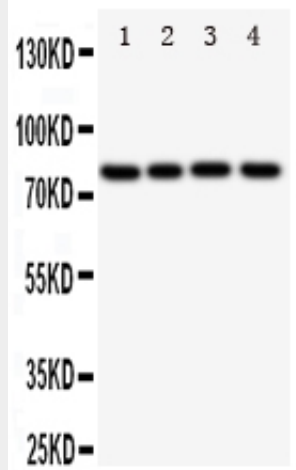
Abundant in brain.

Anti-SP4 Antibody - Protocols

Provided below are standard protocols that you may find useful for product applications.

- [Western Blot](#)
- [Blocking Peptides](#)
- [Dot Blot](#)
- [Immunohistochemistry](#)
- [Immunofluorescence](#)
- [Immunoprecipitation](#)
- [Flow Cytometry](#)
- [Cell Culture](#)

Anti-SP4 Antibody - Images



Anti-SP4 antibody, ABO11172, Western blotting
 All lanes: Anti SP4 (ABO11172) at 0.5ug/ml
 Lane 1: Rat Spleen Tissue Lysate at 50ug
 Lane 2: SGC Whole Cell Lysate at 40ug
 Lane 3: HELA Whole Cell Lysate at 40ug
 Lane 4: JURKAT Whole Cell Lysate at 40ug
 Predicted bind size: 82KD
 Observed bind size: 82KD

Anti-SP4 Antibody - Background

SP4 (Sp4 transcription factor), also known as Transcription factor Sp4, MGC130008, MGC130009, SPR-1, HF1B, is a protein that in humans is encoded by the SP4 gene. It is a multigene family of SP proteins. Northern blot analysis that SP4 is abundantly expressed as a 7.5-kb message in brain, but barely detectable in other human cell lines. SP4 is an activator protein like SP1. However, in contrast to SP1, SP4 is not able to act synergistically through adjacent binding sites.