

**Anti-KLF5 Antibody**  
**Catalog # ABO11195****Specification**

---

**Anti-KLF5 Antibody - Product Information**

Application	WB
Primary Accession	<a href="#">Q13887</a>
Host	Rabbit
Reactivity	Human, Mouse, Rat
Clonality	Polyclonal
Format	Lyophilized

**Description**

Rabbit IgG polyclonal antibody for Krueppel-like factor 5(KLF5) detection. Tested with WB in Human;Mouse;Rat.

**Reconstitution**

Add 0.2ml of distilled water will yield a concentration of 500ug/ml.

**Anti-KLF5 Antibody - Additional Information**

**Gene ID** 688

**Other Names**

Krueppel-like factor 5, Basic transcription element-binding protein 2, BTE-binding protein 2, Colon krueppel-like factor, GC-box-binding protein 2, Intestinal-enriched krueppel-like factor, Transcription factor BTEB2, KLF5, BTEB2, CKLF, IKLF

**Calculated MW**

50792 MW KDa

**Application Details**

Western blot, 0.1-0.5 µg/ml, Human, Mouse, Rat

**Subcellular Localization**

Nucleus .

**Tissue Specificity**

Expressed only in testis and placenta.

**Protein Name**

Krueppel-like factor 5

**Contents**

Each vial contains 5mg BSA, 0.9mg NaCl, 0.2mg Na<sub>2</sub>HPO<sub>4</sub>, 0.05mg Thimerosal, 0.05mg NaN<sub>3</sub>.

**Immunogen**

A synthetic peptide corresponding to a sequence in the middle region of human KLF5(109-126aa HKKYRRDSASVVDQFFTD), identical to the related rat and mouse sequences.

**Purification**

Immunogen affinity purified.

**Cross Reactivity**

No cross reactivity with other proteins

**Storage**

**At -20°C for one year. After reconstitution, at 4°C for one month. It can also be aliquotted and stored frozen at -20°C for a longer time. Avoid repeated freezing and thawing.**

**Sequence Similarities**

Belongs to the krueppel C2H2-type zinc-finger protein family.

**Anti-KLF5 Antibody - Protein Information**

**Name** KLF5

**Synonyms** BTEB2, CKLF, IKLF

**Function**

Transcription factor that binds to GC box promoter elements. Activates the transcription of these genes.

**Cellular Location**

Nucleus.

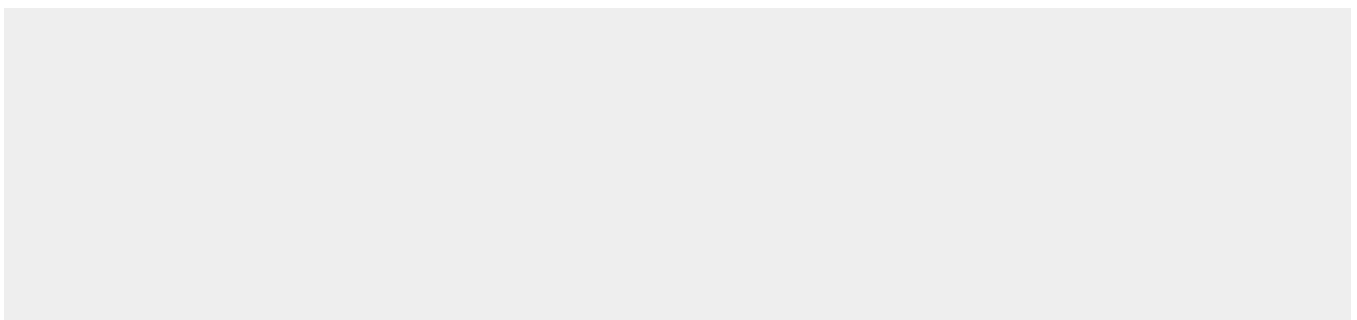
**Tissue Location**

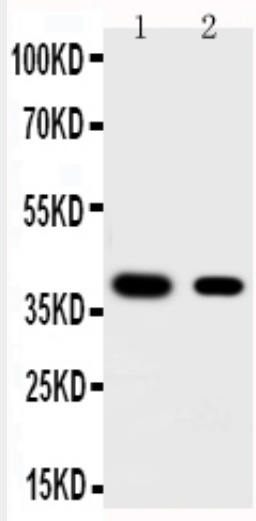
Expressed only in testis and placenta.

**Anti-KLF5 Antibody - Protocols**

Provided below are standard protocols that you may find useful for product applications.

- [Western Blot](#)
- [Blocking Peptides](#)
- [Dot Blot](#)
- [Immunohistochemistry](#)
- [Immunofluorescence](#)
- [Immunoprecipitation](#)
- [Flow Cytometry](#)
- [Cell Culture](#)

**Anti-KLF5 Antibody - Images**



Anti-KLF5 antibody, ABO11195, Western blotting  
Lane 1: HELA Cell Lysate  
Lane 2: MCF-7 Cell Lysate

#### **Anti-KLF5 Antibody - Background**

KLF5 (Krueppel-like factor 5) is a protein that in humans is encoded by the KLF5 gene. It is also known as BASIC TRANSCRIPTION ELEMENT-BINDING PROTEIN 2 or BTEB2. This gene encodes a member of the Kruppel-like factor subfamily of zinc finger proteins. Suske et al. (2005) stated that the human KLF5 gene maps to chromosome 13q21.33, and the mouse Klf5 gene to chromosome 14E2.1. Sogawa et al. (1993) isolated a cDNA encoding BTEB2. The predicted 219-amino acid protein contains 3 consecutive zinc finger motifs near the C terminus. The zinc finger domains were 59% and 64% identical to those of Sp1 (189906) and BTEB1, respectively. Both BTEB2 and Sp1 have a short basic region preceding the zinc finger motifs that may play an auxiliary role in DNA binding. The N-terminal region of BTEB2 is proline rich. Recombinant BTEB2 protein and Sp1 showed very similar DNA-binding specificity in vitro. When expressed in mammalian cells, BTEB2 activated the transcription of a reporter gene fused to a GC box-containing promoter. Sogawa et al. (1993) also identified the rat BTEB2 homolog. Northern blot analysis of rat tissues revealed that BTEB2 is expressed only in the testis and placenta.