

**Anti-KLF8 Antibody**  
**Catalog # ABO11196****Specification**

---

**Anti-KLF8 Antibody - Product Information**

Application	WB
Primary Accession	<a href="#">O95600</a>
Host	Rabbit
Reactivity	Human
Clonality	Polyclonal
Format	Lyophilized

**Description**

Rabbit IgG polyclonal antibody for Krueppel-like factor 8(KLF8) detection. Tested with WB in Human.

**Reconstitution**

Add 0.2ml of distilled water will yield a concentration of 500ug/ml.

**Anti-KLF8 Antibody - Additional Information**

**Gene ID** 11279

**Other Names**

Krueppel-like factor 8, Basic krueppel-like factor 3, Zinc finger protein 741, KLF8, BKLF3, ZNF741

**Calculated MW**

39314 MW KDa

**Application Details**

Western blot, 0.1-0.5 µg/ml, Human<br>

**Subcellular Localization**

Nucleus .

**Tissue Specificity**

Ubiquitous. .

**Protein Name**

Krueppel-like factor 8

**Contents**

Each vial contains 5mg BSA, 0.9mg NaCl, 0.2mg Na<sub>2</sub>HPO<sub>4</sub>, 0.05mg Thimerosal, 0.05mg NaN<sub>3</sub>.

**Immunogen**

A synthetic peptide corresponding to a sequence at the N-terminus of human KLF8(1-18aa MVDMDKLINNLEVQLNSE).

**Purification**

Immunogen affinity purified.

**Cross Reactivity**

No cross reactivity with other proteins

**Storage**

At -20°C for one year. After reconstitution, at 4°C for one month. It can also be aliquotted and stored frozen at -20°C for a longer time. Avoid repeated freezing and thawing.

**Sequence Similarities**

Belongs to the Sp1 C2H2-type zinc-finger protein family.

**Anti-KLF8 Antibody - Protein Information**

**Name** KLF8

**Synonyms** BKLF3, ZNF741

**Function**

Transcriptional repressor and activator. Binds to CACCC-boxes promoter elements. Also binds the GT-box of cyclin D1 promoter and mediates cell cycle progression at G(1) phase as a downstream target of focal adhesion kinase (FAK).

**Cellular Location**

Nucleus.

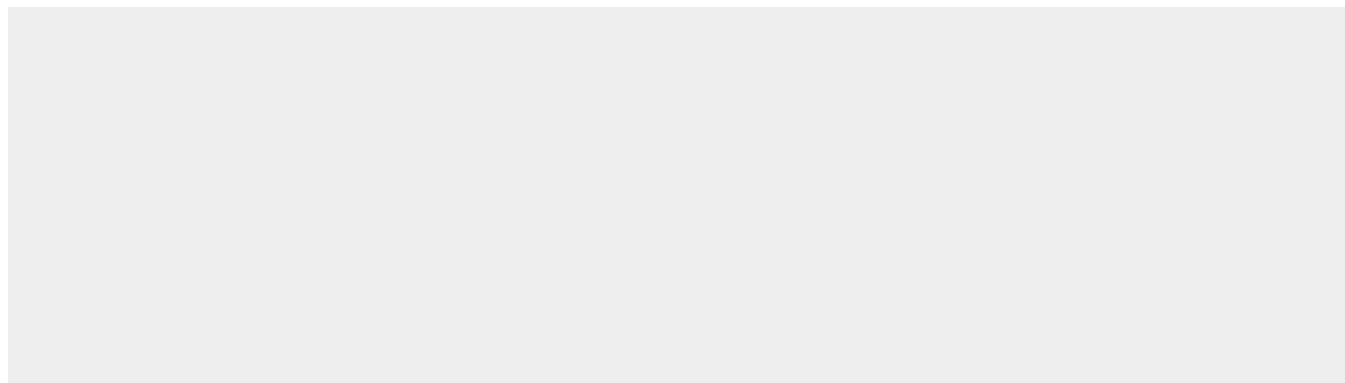
**Tissue Location**

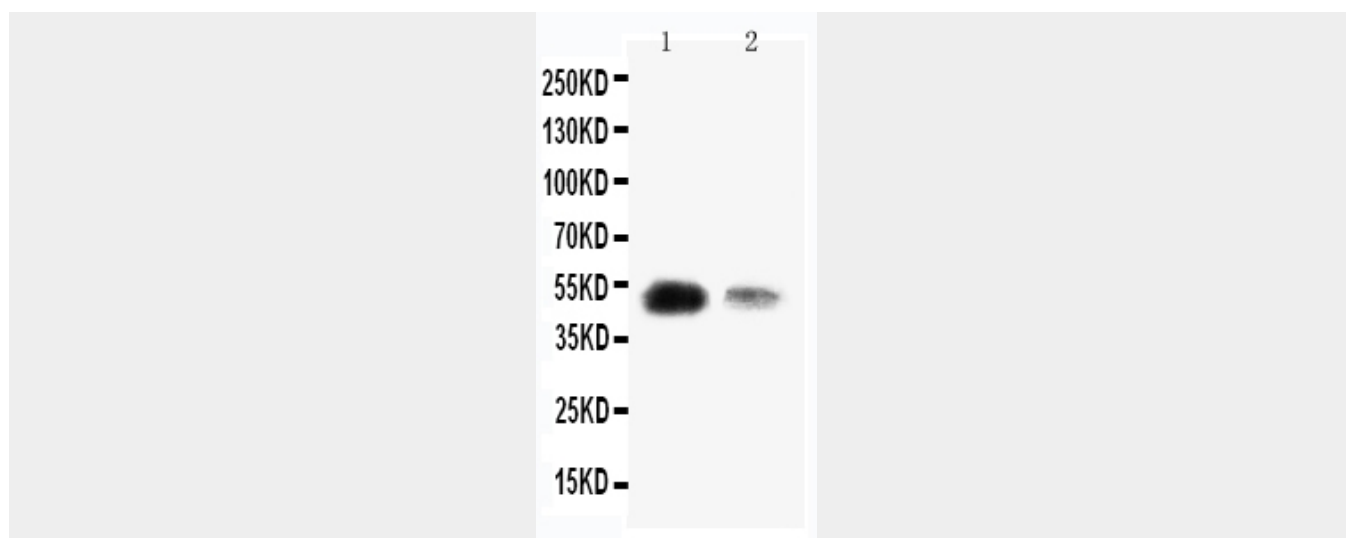
Ubiquitous..

**Anti-KLF8 Antibody - Protocols**

Provided below are standard protocols that you may find useful for product applications.

- [Western Blot](#)
- [Blocking Peptides](#)
- [Dot Blot](#)
- [Immunohistochemistry](#)
- [Immunofluorescence](#)
- [Immunoprecipitation](#)
- [Flow Cytometry](#)
- [Cell Culture](#)

**Anti-KLF8 Antibody - Images**



Anti-KLF8 antibody, ABO11196, Western blotting  
Lane 1: SMMC Cell Lysate  
Lane 2: 293T Cell Lysate

### Anti-KLF8 Antibody - Background

KLF8(Krueppel-like factor 8) is a protein that in humans is encoded by the KLF8 gene. It is also named as ZNF741, or BKLF3. Kruppel-like factor proteins, including KLF8, all contain a characteristic C-terminal DNA-binding domain containing 3 Kruppel-like zinc fingers, and they all recognize CACCC and GC boxes present in promoters and enhancers. The International Radiation Hybrid Mapping Consortium mapped the KLF8 gene to the X chromosome(WI-18614). Suske et al.(2005) stated that the human KLF8 gene maps to chromosome Xp11.21, and the mouse Klf8 gene to chromosome XF3. van Vliet et al.(2000) identified a cDNA encoding KLF8, also called ZNF741. Expression of KLF8 or only its zinc fingers showed that the fingers could bind to a CACCC box. Sequence analysis predicted that the 359-amino acid protein contains a nuclear localization signal upstream of the zinc fingers, a valine-rich hydrophobic stretch, and a pro-val-asp-leu-ser(PVDLS) motif. Yeast 2-hybrid and GST pull-down analysis demonstrated that CTBP2 interacts with KLF8 through the PVDLS motif.