

Anti-DLL3 Antibody
Catalog # ABO11216**Specification**

Anti-DLL3 Antibody - Product Information

Application	WB
Primary Accession	Q9NYJ7
Host	Rabbit
Reactivity	Human
Clonality	Polyclonal
Format	Lyophilized

Description

Rabbit IgG polyclonal antibody for Delta-like protein 3(DLL3) detection. Tested with WB in Human.

Reconstitution

Add 0.2ml of distilled water will yield a concentration of 500ug/ml.

Anti-DLL3 Antibody - Additional Information

Gene ID 10683

Other Names

Delta-like protein 3, Drosophila Delta homolog 3, Delta3, DLL3

Calculated MW

64618 MW KDa

Application Details

Western blot, 0.1-0.5 µg/ml, Human

Subcellular Localization

Membrane ; Single-pass type I membrane protein .

Protein Name

Delta-like protein 3

Contents

Each vial contains 5mg BSA, 0.9mg NaCl, 0.2mg Na₂HPO₄, 0.05mg Thimerosal, 0.05mg NaN₃.

Immunogen

A synthetic peptide corresponding to a sequence at the C-terminus of human DLL3(599-618aa RAGQRQHLLFPYPSSILSVK).

Purification

Immunogen affinity purified.

Cross Reactivity

No cross reactivity with other proteins

Storage

At -20°C for one year. After reconstitution, at 4°C for one month. It can also be aliquotted and stored frozen at -20°C for a longer time. Avoid repeated freezing and thawing.

Sequence Similarities

Contains 1 DSL domain.

Anti-DLL3 Antibody - Protein Information

Name DLL3

Function

Inhibits primary neurogenesis. May be required to divert neurons along a specific differentiation pathway. Plays a role in the formation of somite boundaries during segmentation of the paraxial mesoderm (By similarity).

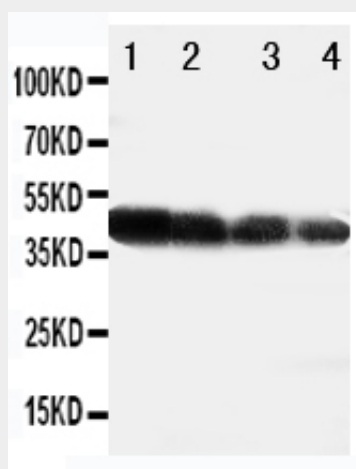
Cellular Location

Membrane; Single-pass type I membrane protein

Anti-DLL3 Antibody - Protocols

Provided below are standard protocols that you may find useful for product applications.

- [Western Blot](#)
- [Blocking Peptides](#)
- [Dot Blot](#)
- [Immunohistochemistry](#)
- [Immunofluorescence](#)
- [Immunoprecipitation](#)
- [Flow Cytometry](#)
- [Cell Culture](#)

Anti-DLL3 Antibody - Images

Anti-DLL3 antibody, ABO11216, Western blotting All lanes: Anti DLL3 (ABO11216) at 0.5ug/ml
Lane 1: Recombinant Human DLL3 Protein 10ng
Lane 2: Recombinant Human DLL3 Protein 5ng
Lane 3:

Recombinant Human DLL3 Protein 2.5ngLane 4: Recombinant Human DLL3 Protein 1.25ng
Predicted bind size: 41KDObserved bind size: 41KD

Anti-DLL3 Antibody - Background

DLL3(DELTA-LIKE 3) also known as DELTA, DROSOPHILA, HOMOLOG OF, is a protein which in humans is encoded by the DLL3 gene. This gene encodes a member of the delta protein ligand family. This family functions as Notch ligands that are characterized by a DSL domain, EGF repeats, and a transmembrane domain. Mutation in the mouse delta-like 3 gene(Dll3), which is homologous to the Notch-ligand delta in Drosophila, results in the mouse 'pudgy' phenotype. The human DLL3 gene was identified within a critical interval, mapped in 2 consanguineous Arab-Israeli and Pakistani SCDO1 pedigrees, of 7.8 cM at 19q13.1-q13.3 between D19S570 and D19S908(Bulman et al., 2000). Dunwoodie et al.(1997) presented results suggesting that mouse Dll3 may complement the function of other delta homologs during early pattern formation in the mouse embryo. In humans, the fact that mutations in genes required for oscillation, such as DLL3, result in abnormal segmentation of the vertebral column suggests that the segmentation clock also acts during human embryonic development. This residue is highly conserved in Delta proteins from Drosophila to humans, and the substitution of a charged polar for a nonpolar residue may disrupt the conformation of the DLL3 protein.