

**Anti-Beta Glucuronidase(Gusb) Antibody**  
**Catalog # ABO11219****Specification**

---

**Anti-Beta Glucuronidase(Gusb) Antibody - Product Information**

Application	<b>WB</b>
Primary Accession	<a href="#">P08236</a>
Host	<b>Rabbit</b>
Reactivity	<b>Human</b>
Clonality	<b>Polyclonal</b>
Format	<b>Lyophilized</b>

**Description**

Rabbit IgG polyclonal antibody for Beta-glucuronidase(GUSB) detection. Tested with WB in Human.

**Reconstitution**

Add 0.2ml of distilled water will yield a concentration of 500ug/ml.

**Anti-Beta Glucuronidase(Gusb) Antibody - Additional Information**

**Gene ID** 2990

**Other Names**

Beta-glucuronidase, 3.2.1.31, Beta-G1, GUSB

**Calculated MW**

74732 MW KDa

**Application Details**

Western blot, 0.1-0.5 µg/ml, Human<br>

**Subcellular Localization**

Lysosome.

**Protein Name**

Beta-glucuronidase

**Contents**

Each vial contains 5mg BSA, 0.9mg NaCl, 0.2mg Na<sub>2</sub>HPO<sub>4</sub>, 0.05mg Thimerosal, 0.05mg NaN<sub>3</sub>.

**Immunogen**

A synthetic peptide corresponding to a sequence at the N-terminus of human beta glucuronidase(GUSB)(50-70aa DFSDNRRRGFEEQWYRRPLWE).

**Purification**

Immunogen affinity purified.

**Cross Reactivity**

No cross reactivity with other proteins

**Storage**

At -20°C for one year. After reconstitution, at 4°C for one month. It can also be aliquotted and stored frozen at -20°C for a longer time. Avoid repeated freezing and thawing.

**Anti-Beta Glucuronidase(Gusb) Antibody - Protein Information**

**Name** GUSB

**Function**

Plays an important role in the degradation of dermatan and keratan sulfates.

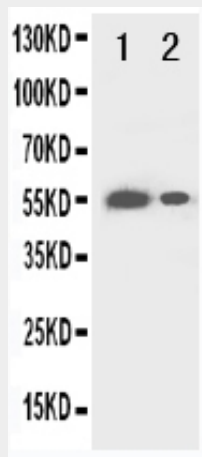
**Cellular Location**

Lysosome.

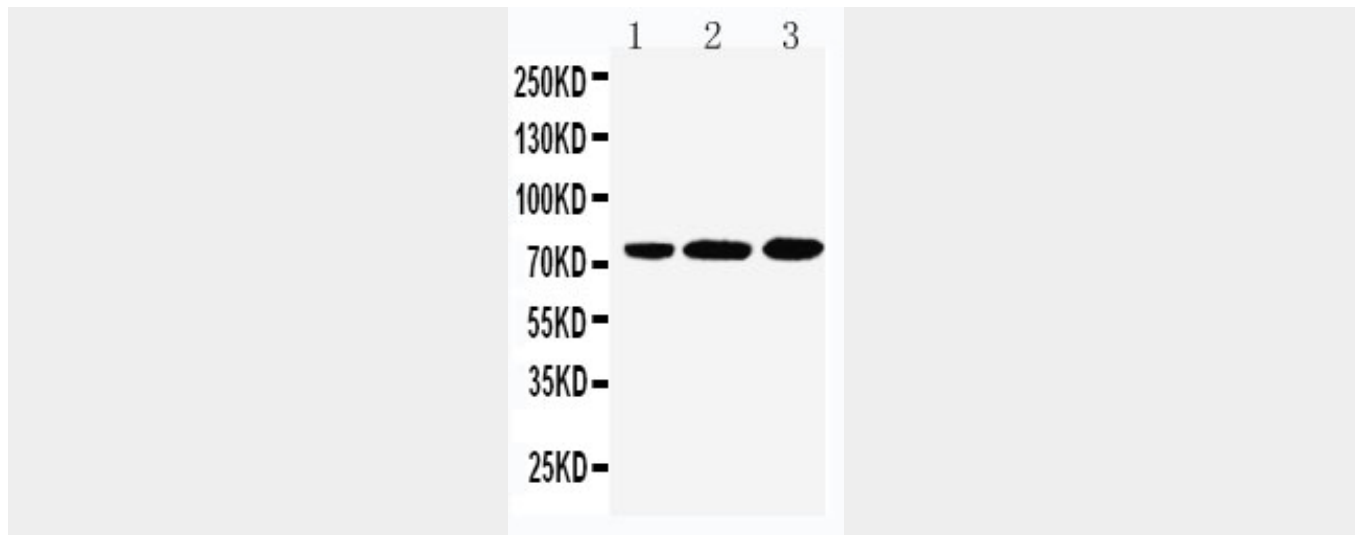
**Anti-Beta Glucuronidase(Gusb) Antibody - Protocols**

Provided below are standard protocols that you may find useful for product applications.

- [Western Blot](#)
- [Blocking Peptides](#)
- [Dot Blot](#)
- [Immunohistochemistry](#)
- [Immunofluorescence](#)
- [Immunoprecipitation](#)
- [Flow Cytometry](#)
- [Cell Culture](#)

**Anti-Beta Glucuronidase(Gusb) Antibody - Images**

Anti-beta glucuronidase(GUSB) antibody, ABO11219, Western blotting Recombinant Protein Detection Source: E.coli derived -recombinant Human GUSB, 40.9KD(162aa tag+ M1-P290) Lane 1: Recombinant Human GUSB Protein 10ng Lane 2: Recombinant Human GUSB Protein 5ng



Anti-beta glucuronidase(GUSB) antibody, ABO11219, Western blotting  
Lane 1: HELA Cell Lysate  
Lane 2: SW620 Cell Lysate  
Lane 3: MCF-7 Cell Lysate

### Anti-Beta Glucuronidase(Gusb) Antibody - Background

GUSB(Beta-Glucuronidase) is an enzyme that in humans is encoded by the GUSB gene. The GUSB gene encodes beta-glucuronidase, a lysosomal hydrolase involved in the stepwise degradation of glucuronic acid-containing glycosaminoglycans. It is a tetrameric glycoprotein composed of identical subunits. The GUSB gene is mutated in mucopolysaccharidosis type VII. Miller et al.(1990) reported that the GUSB gene is 21 kb long and contains 12 exons. The GUSB gene is mapped on 7q11.21. Beta-glucuronic acid acts naturally to cleave glucuronides from conjugated bilirubin to produce unconjugated bilirubin, which is then absorbed into the bloodstream. Kreamer et al.(2001) postulated that the beta-glucuronidase inhibitor L-aspartic acid can thus block enterohepatic circulation of bilirubin. Tomatsu et al.(2002) stated that more than 45 different mutations in the GUSB gene had been identified in human patients with MPS VII, approximately 90% of which were point mutations.