

Anti-KLF2 Antibody
Catalog # ABO11222**Specification**

Anti-KLF2 Antibody - Product Information

Application	WB
Primary Accession	Q60843
Host	Rabbit
Reactivity	Human, Mouse, Rat
Clonality	Polyclonal
Format	Lyophilized

Description

Rabbit IgG polyclonal antibody for Krueppel-like factor 2(KLF2) detection. Tested with WB in Human;Mouse;Rat.

Reconstitution

Add 0.2ml of distilled water will yield a concentration of 500ug/ml.

Anti-KLF2 Antibody - Additional Information

Gene ID 16598

Other Names

Krueppel-like factor 2, Lung krueppel-like factor, Klf2, Lklf

Calculated MW

37657 MW KDa

Application Details

Western blot, 0.1-0.5 µg/ml, Human, Rat, Mouse

Subcellular Localization

Nucleus .

Tissue Specificity

Predominant expression in the lungs and spleen.

Protein Name

Krueppel-like factor 2

Contents

Each vial contains 5mg BSA, 0.9mg NaCl, 0.2mg Na₂HPO₄, 0.05mg Thimerosal, 0.05mg NaN₃.

Immunogen

A synthetic peptide corresponding to a sequence at the N-terminus of mouse KLF2(19-32aa ERGLQERWPRNEPE), identical to the related rat sequence and different from the related human sequence by one amino acid.

Purification

Immunogen affinity purified.

Cross Reactivity

No cross reactivity with other proteins

Storage

At -20°C for one year. After r°Constitution, at 4°C for one month. It°Can also be aliquotted and stored frozen at -20°C for a longer time.Avoid repeated freezing and thawing.

Sequence Similarities

Belongs to the krueppel C2H2-type zinc-finger protein family.

Anti-KLF2 Antibody - Protein Information

Name Klf2

Synonyms Lklf

Function

Transcription factor that binds to the CACCC box in the promoter of target genes such as HBB/beta globin or NOV and activates their transcription. Might be involved in transcriptional regulation by modulating the binding of the RARA nuclear receptor to RARE DNA elements (By similarity).

Cellular Location

Nucleus.

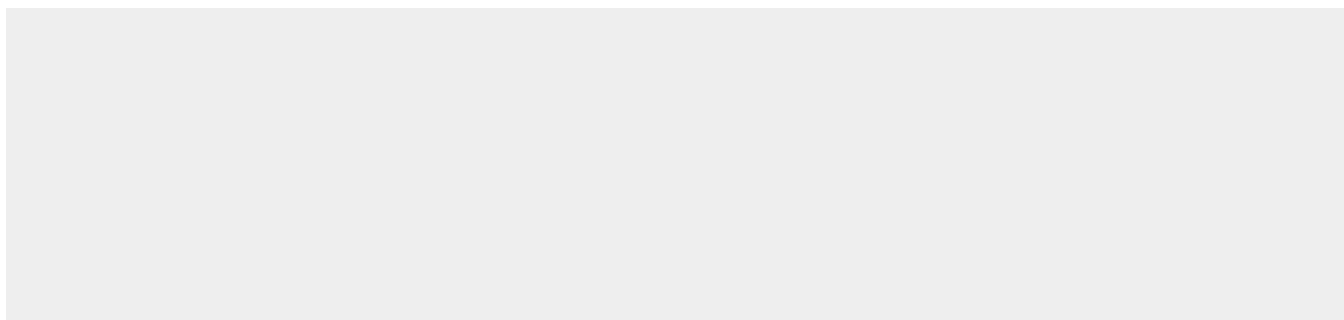
Tissue Location

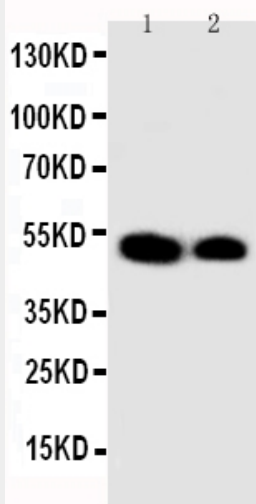
Predominant expression in the lungs and spleen.

Anti-KLF2 Antibody - Protocols

Provided below are standard protocols that you may find useful for product applications.

- [Western Blot](#)
- [Blocking Peptides](#)
- [Dot Blot](#)
- [Immunohistochemistry](#)
- [Immunofluorescence](#)
- [Immunoprecipitation](#)
- [Flow Cytometry](#)
- [Cell Culture](#)

Anti-KLF2 Antibody - Images



Anti-KLF2 antibody, ABO11222, Western blotting
Lane 1: Recombinant Human KLF2 Protein 10ng
Lane 2: Recombinant Human KLF2 Protein 5ng

Anti-KLF2 Antibody - Background

KLF2(Krueppel-like factor 2), also known as LKLF(LUNG KRUPPEL-LIKE ZINC FINGER TRANSCRIPTION FACTOR), is a protein that in humans is encoded by the KLF2 gene. Kruppel-like factors(KLFs) are a family of broadly expressed zinc finger transcription factors. KLF2 regulates T-cell trafficking by promoting expression of the lipid-binding receptor S1P1(S1PR1) and the selectin CD62L. Kozyrev et al.(1999) mapped the KLF2 gene to chromosome 19p13.13-p13.11, close to the KLF1 gene, by radiation hybrid analysis. Wani et al.(1999) mapped the KLF2 gene to 19p13.1 by somatic cell hybrid analysis and FISH. Buckley et al.(2001) showed that expression of LKLF in a T-cell line induced reversible quiescence resulting in marked inhibition of proliferation, decreases in cell size and protein synthesis, and reduced expression of activation markers. They concluded that LKLF functions, in part, by negatively regulating a MYC-dependent pathway.