

Anti-PECAM-1/CD31 Antibody
Catalog # ABO11255**Specification**

Anti-PECAM-1/CD31 Antibody - Product Information

Application	WB
Primary Accession	Q08481
Host	Rabbit
Reactivity	Mouse
Clonality	Polyclonal
Format	Lyophilized

Description

Rabbit IgG polyclonal antibody for Platelet endothelial cell adhesion molecule(PECAM1) detection. Tested with WB in Mouse.

Reconstitution

Add 0.2ml of distilled water will yield a concentration of 500ug/ml.

Anti-PECAM-1/CD31 Antibody - Additional Information

Gene ID 18613

Other Names

Platelet endothelial cell adhesion molecule, PECAM-1, CD31, Pecam1, Pecam, Pecam-1

Calculated MW

81263 MW KDa

Application Details

Western blot, 0.1-0.5 µg/ml, Mouse

Subcellular Localization

Cell membrane ; Single-pass type I membrane protein . Cell membrane ; Lipid-anchor . Cell junction. Localizes to the lateral border recycling compartment (LBRC) and recycles from the LBRC to the junction in resting endothelial cells. .

Tissue Specificity

Isoform 1 and isoform 3 are expressed in lung and platelets. .

Protein Name

Platelet endothelial cell adhesion molecule

Contents

Each vial contains 5mg BSA, 0.9mg NaCl, 0.2mg Na₂HPO₄, 0.05mg Thimerosal, 0.05mg NaN₃.

Immunogen

A synthetic peptide corresponding to a sequence at the C-terminus of mouse CD31(547-566aa HNKQASKKQEGQYYCTASNR).

Purification

Immunogen affinity purified.

Cross Reactivity

No cross reactivity with other proteins

Storage

At -20°C for one year. After reconstitution, at 4°C for one month. It can also be aliquotted and stored frozen at -20°C for a longer time. Avoid repeated freezing and thawing.

Sequence Similarities

Contains 6 Ig-like C2-type (immunoglobulin-like) domains.

Anti-PECAM-1/CD31 Antibody - Protein Information

Name Pecam1

Synonyms Pecam, Pecam-1

Function

Cell adhesion molecule which is required for leukocyte transendothelial migration (TEM) under most inflammatory conditions (By similarity). Tyr-679 plays a critical role in TEM and is required for efficient trafficking of PECAM1 to and from the lateral border recycling compartment (LBRC) and is also essential for the LBRC membrane to be targeted around migrating leukocytes (By similarity). Trans-homophilic interaction may play a role in endothelial cell-cell adhesion via cell junctions (By similarity). Heterophilic interaction with CD177 plays a role in transendothelial migration of neutrophils (By similarity). Homophilic ligation of PECAM1 prevents macrophage-mediated phagocytosis of neighboring viable leukocytes by transmitting a detachment signal (By similarity). Promotes macrophage-mediated phagocytosis of apoptotic leukocytes by tethering them to the phagocytic cells; PECAM1-mediated detachment signal appears to be disabled in apoptotic leukocytes (By similarity). Modulates bradykinin receptor BDKRB2 activation (By similarity). Regulates bradykinin- and hyperosmotic shock-induced ERK1/2 activation in endothelial cells (By similarity). Induces susceptibility to atherosclerosis (PubMed: [19048083](http://www.uniprot.org/citations/19048083)).

Cellular Location

Cell membrane {ECO:0000250|UniProtKB:P16284}; Single-pass type I membrane protein {ECO:0000250|UniProtKB:P16284} Membrane raft {ECO:0000250|UniProtKB:P16284}. Cell junction {ECO:0000250|UniProtKB:P16284}. Note=Localizes to the lateral border recycling compartment (LBRC) and recycles from the LBRC to the junction in resting endothelial cells. Cell surface expression on neutrophils is down-regulated upon fMLP or CXCL8/IL8-mediated stimulation {ECO:0000250|UniProtKB:P16284}

Tissue Location

[Isoform 1]: Expressed in lung and platelets (at protein level).

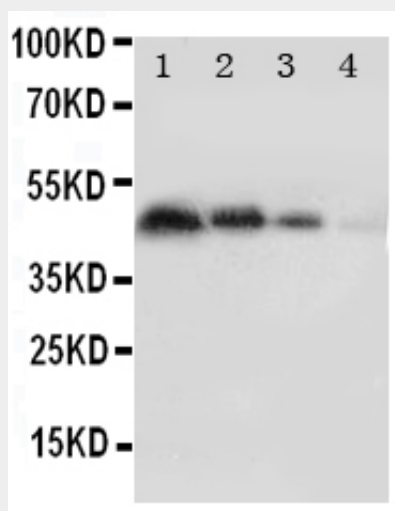
Anti-PECAM-1/CD31 Antibody - Protocols

Provided below are standard protocols that you may find useful for product applications.

- [Western Blot](#)
- [Blocking Peptides](#)

- [Dot Blot](#)
- [Immunohistochemistry](#)
- [Immunofluorescence](#)
- [Immunoprecipitation](#)
- [Flow Cytometry](#)
- [Cell Culture](#)

Anti-PECAM-1/CD31 Antibody - Images



Anti-CD31 antibody, ABO11255, Western blotting Recombinant Protein Detection Source: E.coli derived -recombinant Mouse PECAM1, 46.2KD(162aa tag+ P474-T727) Lane 1: Recombinant Mouse PECAM1 Protein 10ng Lane 2: Recombinant Mouse PECAM1 Protein 5ng Lane 3: Recombinant Mouse PECAM1 Protein 2.5ng Lane 4: Recombinant Mouse PECAM1 Protein 1.25ng

Anti-PECAM-1/CD31 Antibody - Background

PECAM-1 (Platelet endothelial cell adhesion molecule), also known as cluster of differentiation 31 (CD31) is a protein that in human is encoded by the PECAM1 gene found on chromosome 17. PECAM1 is a member of the immunoglobulin (Ig) superfamily that is expressed on the surface of circulating platelets, monocytes, neutrophils, and particular T-cell subsets. Using a PCR-based analysis of somatic cell hybrids, Gumina et al. (1996) mapped PECAM1 to chromosome 17 in the region 17q23-qter. Several adhesion molecules expressed on platelets and endothelium also localized to 17q. Xie and Muller (1996) mapped the Pecam1 gene to mouse chromosome 6, region F3-G1, by fluorescence in situ hybridization. PECAM-1 is found on the surface of platelets, monocytes, neutrophils, and some types of T-cells, and makes up a large portion of endothelial cell intercellular junctions, and PECAM-1 plays a key role in removing aged neutrophils from the body.