

Anti-TLR10 Antibody
Catalog # ABO11264**Specification**

Anti-TLR10 Antibody - Product Information

Application	WB
Primary Accession	Q9BXR5
Host	Rabbit
Reactivity	Human
Clonality	Polyclonal
Format	Lyophilized

Description

Rabbit IgG polyclonal antibody for Toll-like receptor 10(TLR10) detection. Tested with WB in Human.

Reconstitution

Add 0.2ml of distilled water will yield a concentration of 500ug/ml.

Anti-TLR10 Antibody - Additional Information

Gene ID 81793

Other Names

Toll-like receptor 10, CD290, TLR10

Calculated MW

94564 MW KDa

Application Details

Western blot, 0.1-0.5 µg/ml, Human

Subcellular Localization

Membrane ; Single-pass type I membrane protein .

Tissue Specificity

Highly expressed in spleen, lymph node, thymus, tonsil and at lower levels in lung. Highly expressed in promyelocytic HL-60 cells and in B-cell lines.

Protein Name

Toll-like receptor 10

Contents

Each vial contains 5mg BSA, 0.9mg NaCl, 0.2mg Na₂HPO₄, 0.05mg Thimerosal, 0.05mg NaN₃.

Immunogen

A synthetic peptide corresponding to a sequence at the N-terminus of human TLR10(88-102aa DLKTFEFNKELRD).

Purification

Immunogen affinity purified.

Cross Reactivity

No cross reactivity with other proteins

Storage

At -20°C for one year. After reconstitution, at 4°C for one month. It can also be aliquotted and stored frozen at -20°C for a longer time. Avoid repeated freezing and thawing.

Sequence Similarities

Belongs to the Toll-like receptor family.

Anti-TLR10 Antibody - Protein Information

Name TLR10

Function

Participates in the innate immune response to microbial agents. Acts via MYD88 and TRAF6, leading to NF-kappa-B activation, cytokine secretion and the inflammatory response (By similarity).

Cellular Location

Membrane; Single-pass type I membrane protein

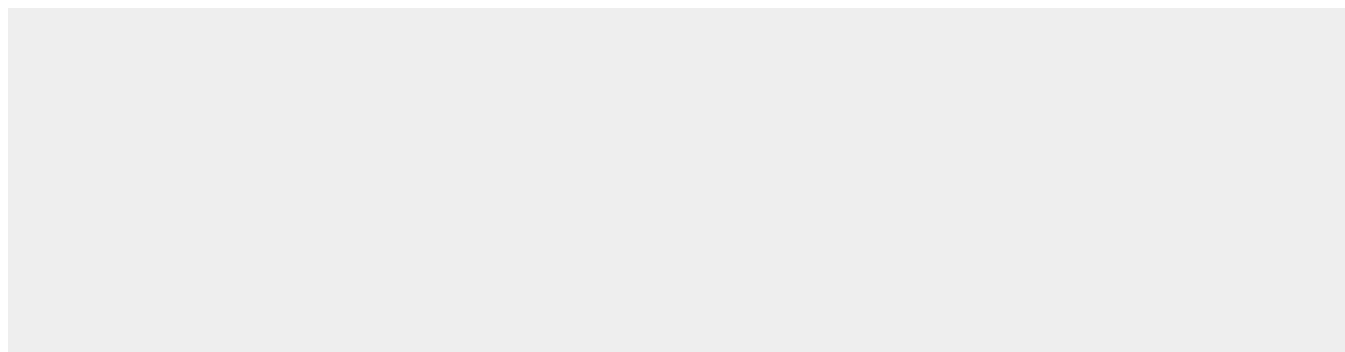
Tissue Location

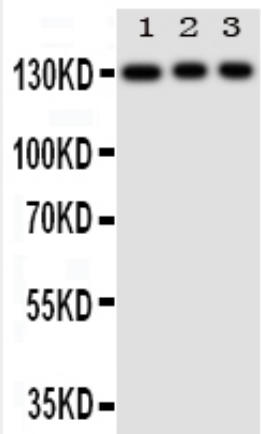
Highly expressed in spleen, lymph node, thymus, tonsil and at lower levels in lung. Highly expressed in promyelocytic HL-60 cells and in B-cell lines

Anti-TLR10 Antibody - Protocols

Provided below are standard protocols that you may find useful for product applications.

- [Western Blot](#)
- [Blocking Peptides](#)
- [Dot Blot](#)
- [Immunohistochemistry](#)
- [Immunofluorescence](#)
- [Immunoprecipitation](#)
- [Flow Cytometry](#)
- [Cell Culture](#)

Anti-TLR10 Antibody - Images



Anti-TLR10 antibody, ABO11264, Western blotting
Lane 1: HELA Cell Lysate
Lane 2: JURKAT Cell Lysate
Lane 3: CEMJ Cell Lysate

Anti-TLR10 Antibody - Background

TLR10(Toll-like receptor 10), is a protein that in humans is encoded by the TLR10 gene. The protein encoded by this gene is a member of the Toll-like receptor(TLR) family which plays a fundamental role in pathogen recognition and activation of innate immunity. By genomic sequence analysis, Hasan et al.(2005) determined that the TLR10 gene is clustered with TLR1 and TLR6 on chromosome 4p14. By coimmunoprecipitation analysis, Hasan et al.(2005) found that TLR10 associated with itself and with TLR1 and TLR2, but not with MD2. Signaling studies showed that TLR10 required MYD88, but not TIRAP, TRAM(TICAM2), or TRIF(TICAM1), to activate immune system promoters. Pro674 within the TLR10 TIR domain was required to activate all promoter examined.