

Anti-AREB6 Antibody
Catalog # ABO11294**Specification**

Anti-AREB6 Antibody - Product Information

Application	WB
Primary Accession	P37275
Host	Rabbit
Reactivity	Human, Rat
Clonality	Polyclonal
Format	Lyophilized

Description

Rabbit IgG polyclonal antibody for Zinc finger E-box-binding homeobox 1(ZEB1) detection. Tested with WB in Human;Rat.

Reconstitution

Add 0.2ml of distilled water will yield a concentration of 500ug/ml.

Anti-AREB6 Antibody - Additional Information

Gene ID 6935

Other Names

Zinc finger E-box-binding homeobox 1, NIL-2-A zinc finger protein, Negative regulator of IL2, Transcription factor 8, TCF-8, ZEB1, AREB6, TCF8

Calculated MW

124074 MW KDa

Application Details

Western blot, 0.1-0.5 µg/ml, Human, Rat

Subcellular Localization

Nucleus .

Tissue Specificity

Colocalizes with SMARCA4/BRG1 in E-cadherin- negative cells from established lines, and stroma of normal colon as well as in de-differentiated epithelial cells at the invasion front of colorectal carcinomas (at protein level). Expressed in heart and skeletal muscle, but not in liver, spleen, or pancreas. .

Protein Name

Zinc finger E-box-binding homeobox 1

Contents

Each vial contains 5mg BSA, 0.9mg NaCl, 0.2mg Na2HPO4, 0.05mg Thimerosal, 0.05mg NaN3.

Immunogen

A synthetic peptide corresponding to a sequence at the N-terminus of human AREB6(108-123aa

KDDECESDAENEQNHD), different from the related rat sequence by one amino acid, and from the related mouse sequence by two amino acids.

Purification

Immunogen affinity purified.

Cross Reactivity

No cross reactivity with other proteins

Storage

At -20°C for one year. After reconstitution, at 4°C for one month. It can also be aliquotted and stored frozen at -20°C for a longer time. Avoid repeated freezing and thawing.

Sequence Similarities

Belongs to the delta-EF1/ZFH-1 C2H2-type zinc-finger family.

Anti-AREB6 Antibody - Protein Information

Name ZEB1 ([HGNC:11642](#))

Function

Acts as a transcriptional repressor. Inhibits interleukin-2 (IL-2) gene expression. Enhances or represses the promoter activity of the ATP1A1 gene depending on the quantity of cDNA and on the cell type. Represses E-cadherin promoter and induces an epithelial-mesenchymal transition (EMT) by recruiting SMARCA4/BRG1. Represses BCL6 transcription in the presence of the corepressor CTBP1. Positively regulates neuronal differentiation. Represses RCOR1 transcription activation during neurogenesis. Represses transcription by binding to the E box (5'-CANNTG-3'). In the absence of TGFβ1, acts as a repressor of COL1A2 transcription via binding to the E-box in the upstream enhancer region (By similarity).

Cellular Location

Nucleus

Tissue Location

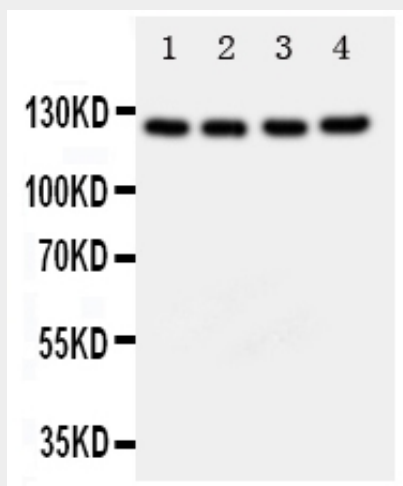
Colocalizes with SMARCA4/BRG1 in E-cadherin- negative cells from established lines, and stroma of normal colon as well as in de-differentiated epithelial cells at the invasion front of colorectal carcinomas (at protein level). Expressed in heart and skeletal muscle, but not in liver, spleen, or pancreas

Anti-AREB6 Antibody - Protocols

Provided below are standard protocols that you may find useful for product applications.

- [Western Blot](#)
- [Blocking Peptides](#)
- [Dot Blot](#)
- [Immunohistochemistry](#)
- [Immunofluorescence](#)
- [Immunoprecipitation](#)
- [Flow Cytometry](#)
- [Cell Culture](#)

Anti-AREB6 Antibody - Images



Anti-AREB6 antibody, ABO11294, Western blotting
Lane 1: MCF-7 Cell Lysate
Lane 2: COLO320 Cell Lysate
Lane 3: SMMC Cell Lysate
Lane 4: A549 Cell Lysate

Anti-AREB6 Antibody - Background

ZEB1(Zinc Finger E Box-Binding Homeobox 1), also called TCF8, NIL2A or DELTA-EF1, is a protein that in humans is encoded by the ZEB1 gene. Fluorescence in situ hybridization localized the ZEB1 gene to chromosome 10p11.2. Krafchak et al.(2005) demonstrated a complex(core plus secondary) binding site for TCF8 in the promoter of the COL4A3 gene, mutant in Alport syndrome and which encodes collagen type IV alpha-3. They detected expression of TCF8 in cornea. Nishimura et al.(2006) found that delta-Ef1 was upregulated during differentiation in a mouse smooth muscle cell(SMC) line.