

Anti-Tollip Antibody
Catalog # ABO11312**Specification**

Anti-Tollip Antibody - Product Information

Application	WB, IHC-P
Primary Accession	Q9H0E2
Host	Rabbit
Reactivity	Human
Clonality	Polyclonal
Format	Lyophilized

Description

Rabbit IgG polyclonal antibody for Toll-interacting protein(TOLLIP) detection. Tested with WB, IHC-P in Human.

Reconstitution

Add 0.2ml of distilled water will yield a concentration of 500ug/ml.

Anti-Tollip Antibody - Additional Information

Gene ID 54472

Other Names

Toll-interacting protein, TOLLIP

Calculated MW

30282 MW KDa

Application Details

Immunohistochemistry(Paraffin-embedded Section), 0.5-1 µg/ml, Human, By Heat
Western blot, 0.1-0.5 µg/ml, Human

Subcellular Localization

Cytoplasm .

Protein Name

Toll-interacting protein

Contents

Each vial contains 5mg BSA, 0.9mg NaCl, 0.2mg Na₂HPO₄, 0.05mg Thimerosal, 0.05mg NaN₃.

Immunogen

A synthetic peptide corresponding to a sequence at the C-terminus of human Tollip(224-243aa NAQPRCSEEDLKAIQDMFPN).

Purification

Immunogen affinity purified.

Cross Reactivity

No cross reactivity with other proteins

Storage

At -20°C for one year. After r°Constitution, at 4°C for one month. It°Can also be aliquotted and stored frozen at -20°C for a longer time.Avoid repeated freezing and thawing.

Sequence Similarities

Belongs to the tollip family.

Anti-Tollip Antibody - Protein Information

Name TOLLIP

Function

Component of the signaling pathway of IL-1 and Toll-like receptors (PubMed:10854325, PubMed:11751856). Inhibits cell activation by microbial products. Recruits IRAK1 to the IL-1 receptor complex (PubMed:10854325). Inhibits IRAK1 phosphorylation and kinase activity (PubMed:11751856). Connects the ubiquitin pathway to autophagy by functioning as a ubiquitin-ATG8 family adapter and thus mediating autophagic clearance of ubiquitin conjugates (PubMed:25042851). The TOLLIP-dependent selective autophagy pathway plays an important role in clearance of cytotoxic polyQ proteins aggregates (PubMed:25042851). In a complex with TOM1, recruits ubiquitin-conjugated proteins onto early endosomes (PubMed:15047686). Binds to phosphatidylinositol 3-phosphate (PtdIns(3)P) (PubMed:26320582).

Cellular Location

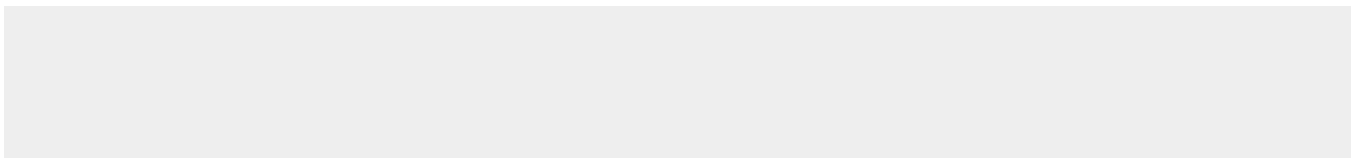
Cytoplasm. Endosome. Early endosome Note=Localized to endo/exosomal vesicles

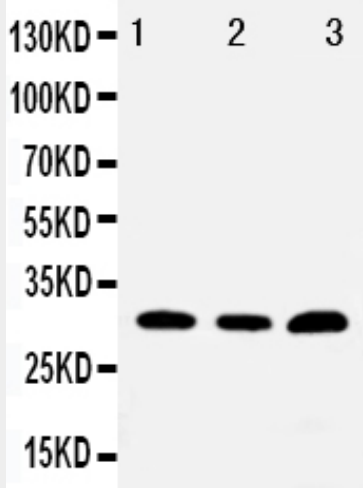
Anti-Tollip Antibody - Protocols

Provided below are standard protocols that you may find useful for product applications.

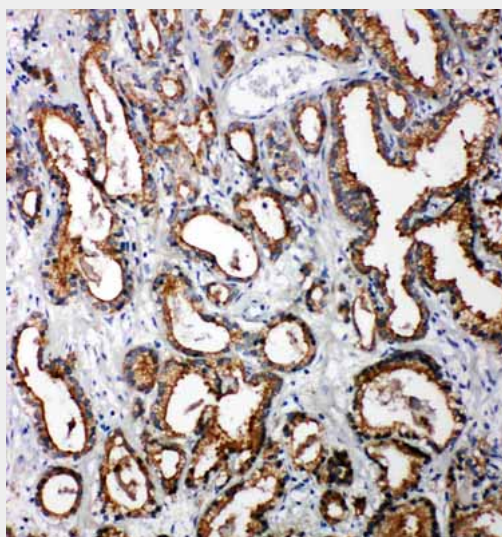
- [Western Blot](#)
- [Blocking Peptides](#)
- [Dot Blot](#)
- [Immunohistochemistry](#)
- [Immunofluorescence](#)
- [Immunoprecipitation](#)
- [Flow Cytometry](#)
- [Cell Culture](#)

Anti-Tollip Antibody - Images





Anti-Tollip antibody, ABO11312, Western blotting Lane 1: PANC Cell Lysate Lane 2: HELA Cell Lysate Lane 3: U87 Cell Lysate



Anti-Tollip antibody, ABO11312, IHC(P) IHC(P): Human Prostatic Cancer Tissue

Anti-Tollip Antibody - Background

TOLLIP (TOLL-Interacting Protein), is an inhibitory adaptor protein that in humans is encoded by the TOLLIP gene. Lo et al. (2009) stated that the TOLLIP gene maps to chromosome 11. The mouse gene maps to chromosome 7. By Western blot analysis of embryonic kidney cells, Burns et al. (2000) confirmed the binding of TOLLIP to IL1RAP, to a complex of IL1RAP-IL1R1, and to IL18R. Burns et al. (2000) proposed that IL1B stimulation induces aggregation of IL1Rs, recruitment of MYD88 followed by TOLLIP-IRAK complexes, and the phosphorylation of IRAK by MYD88. This leads to the dissociation of TOLLIP from IRAK, which can then transmit the IL1-induced signals.