

Anti-TSH Receptor Antibody
Catalog # ABO11320**Specification**

Anti-TSH Receptor Antibody - Product Information

Application	IHC, WB
Primary Accession	P16473
Host	Rabbit
Reactivity	Human
Clonality	Polyclonal
Format	Lyophilized

Description

Rabbit IgG polyclonal antibody for Thyrotropin receptor(TSHR) detection. Tested with WB, IHC-P in Human.

Reconstitution

Add 0.2ml of distilled water will yield a concentration of 500ug/ml.

Anti-TSH Receptor Antibody - Additional Information

Gene ID 7253

Other Names

Thyrotropin receptor, Thyroid-stimulating hormone receptor, TSH-R, TSHR, LGR3

Calculated MW

86830 MW KDa

Application Details

Immunohistochemistry(Paraffin-embedded Section), 0.5-1 µg/ml, Human, By Heat
Western blot, 0.1-0.5 µg/ml, Human

Subcellular Localization

Cell membrane; Multi-pass membrane protein.

Tissue Specificity

Expressed in the thyroid. .

Protein Name

Thyrotropin receptor

Contents

Each vial contains 5mg BSA, 0.9mg NaCl, 0.2mg Na₂HPO₄, 0.05mg Thimerosal, 0.05mg NaN₃.

Immunogen

A synthetic peptide corresponding to a sequence at the N-terminus of human TSH Receptor(30-47aa ECHQEEDFRVTCKDIQRI).

Purification

Immunogen affinity purified.

Cross Reactivity

No cross reactivity with other proteins

Storage

At -20°C for one year. After r°Constitution, at 4°C for one month. It°Can also be aliquotted and stored frozen at -20°C for a longer time.Avoid repeated freezing and thawing.

Sequence Similarities

Belongs to the G-protein coupled receptor 1 family. FSH/LSH/TSH subfamily.

Anti-TSH Receptor Antibody - Protein Information

Name TSHR

Synonyms LGR3

Function

Receptor for the thyroid-stimulating hormone (TSH) or thyrotropin (PubMed:11847099, PubMed:12045258). Also acts as a receptor for the heterodimeric glycoprotein hormone (GPHA2:GPHB5) or thyrostimulin (PubMed:12045258). The activity of this receptor is mediated by G proteins which activate adenylate cyclase (PubMed:11847099). Plays a central role in controlling thyroid cell metabolism (By similarity).

Cellular Location

Cell membrane; Multi-pass membrane protein. Basolateral cell membrane; Multi-pass membrane protein

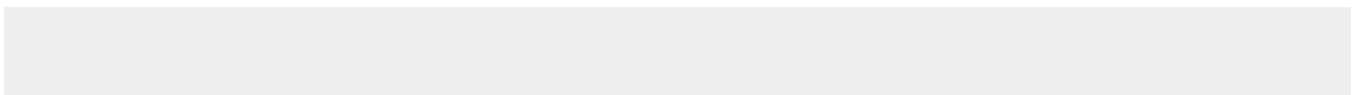
Tissue Location

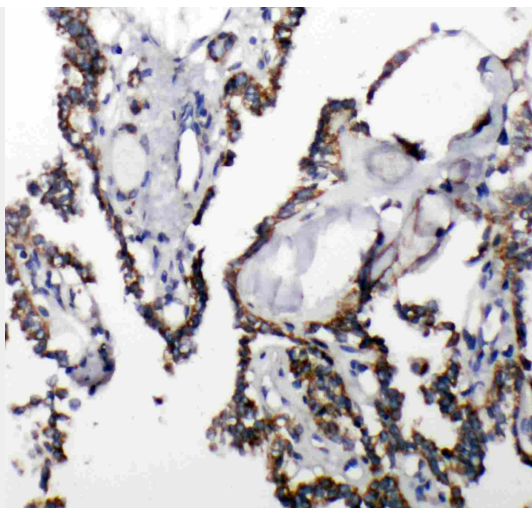
Expressed in thyroid cells (at protein level) (PubMed:11847099). Expressed in the thyroid (PubMed:2610690)

Anti-TSH Receptor Antibody - Protocols

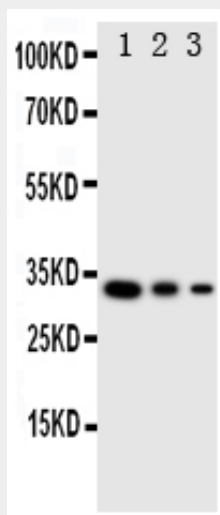
Provided below are standard protocols that you may find useful for product applications.

- [Western Blot](#)
- [Blocking Peptides](#)
- [Dot Blot](#)
- [Immunohistochemistry](#)
- [Immunofluorescence](#)
- [Immunoprecipitation](#)
- [Flow Cytometry](#)
- [Cell Culture](#)

Anti-TSH Receptor Antibody - Images



Anti-TSH Receptor antibody, ABO11320, IHC(P)IHC(P): Human Thyroid Cancer Tissue



Anti-TSH Receptor antibody, ABO11320, Western blotting
Recombinant Protein Detection Source:
E.coli derived -recombinant Human TSHR, 33.5KD(162aa tag+ M1-T136)
Lane 1: Recombinant Human TSHR Protein 10ng
Lane 2: Recombinant Human TSHR Protein 5ng
Lane 3: Recombinant Human TSHR Protein 2.5ng

Anti-TSH Receptor Antibody - Background

TSHR (Thyroid-Stimulating Hormone Receptor), also called LGR3, is mapped to 14q31.1. The protein encoded by this gene is a membrane protein and a major controller of thyroid cell metabolism. The encoded protein is a receptor for thyrothopin and thyrostimulin, and its activity is mediated by adenylate cyclase. Defects in this gene are a cause of several types of hyperthyroidism. Three transcript variants encoding different isoforms have been found for this gene.