

Anti-CETP Antibody
Catalog # ABO11325**Specification**

Anti-CETP Antibody - Product Information

Application	WB
Primary Accession	P11597
Host	Rabbit
Reactivity	Human
Clonality	Polyclonal
Format	Lyophilized

Description

Rabbit IgG polyclonal antibody for Cholesteryl ester transfer protein(CETP) detection. Tested with WB in Human.

Reconstitution

Add 0.2ml of distilled water will yield a concentration of 500ug/ml.

Anti-CETP Antibody - Additional Information

Gene ID 1071

Other Names

Cholesteryl ester transfer protein, Lipid transfer protein I {ECO:0000312|MIM:118470}, CETP (HGNC:1869)

Calculated MW

54756 MW KDa

Application Details

Western blot, 0.1-0.5 µg/ml, Human

Subcellular Localization

Secreted, extracellular space . Secreted in plasma. .

Tissue Specificity

Expressed by the liver and secreted in plasma.

Protein Name

Cholesteryl ester transfer protein

Contents

Each vial contains 5mg BSA, 0.9mg NaCl, 0.2mg Na₂HPO₄, 0.05mg Thimerosal, 0.05mg NaN₃.

Immunogen

A synthetic peptide corresponding to a sequence at the C-terminus of human CETP(368-382aa PRPDQQHSVAYTFEE).

Purification

Immunogen affinity purified.

Cross Reactivity

No cross reactivity with other proteins

Storage

At -20°C for one year. After reconstitution, at 4°C for one month. It can also be aliquotted and stored frozen at -20°C for a longer time. Avoid repeated freezing and thawing.

Sequence Similarities

Belongs to the BPI/LBP/Plunc superfamily. BPI/LBP family.

Anti-CETP Antibody - Protein Information

Name CETP ([HGNC:1869](#))

Function

Involved in the transfer of neutral lipids, including cholesteryl ester and triglyceride, among lipoprotein particles. Allows the net movement of cholesteryl ester from high density lipoproteins/HDL to triglyceride-rich very low density lipoproteins/VLDL, and the equimolar transport of triglyceride from VLDL to HDL (PubMed: [24293641](http://www.uniprot.org/citations/24293641), PubMed: [3281933](http://www.uniprot.org/citations/3281933), PubMed: [3600759](http://www.uniprot.org/citations/3600759)). Regulates the reverse cholesterol transport, by which excess cholesterol is removed from peripheral tissues and returned to the liver for elimination (PubMed: [17237796](http://www.uniprot.org/citations/17237796)).

Cellular Location

Secreted. Note=Secreted in plasma

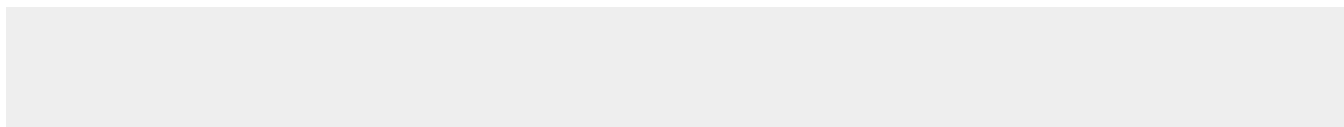
Tissue Location

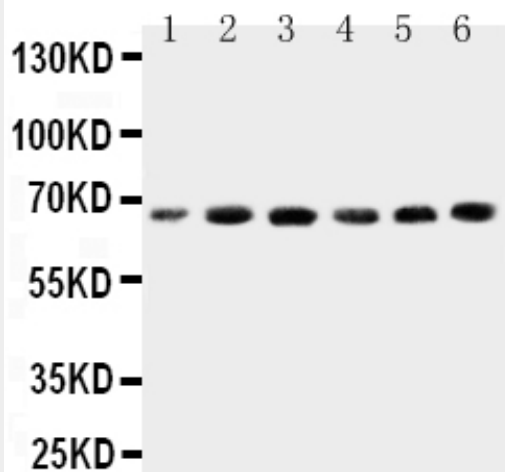
Expressed by the liver and secreted in plasma.

Anti-CETP Antibody - Protocols

Provided below are standard protocols that you may find useful for product applications.

- [Western Blot](#)
- [Blocking Peptides](#)
- [Dot Blot](#)
- [Immunohistochemistry](#)
- [Immunofluorescence](#)
- [Immunoprecipitation](#)
- [Flow Cytometry](#)
- [Cell Culture](#)

Anti-CETP Antibody - Images



Anti-CETP antibody, ABO11325, Western blotting
Lane 1: HELA Cell Lysate
Lane 2: COLO320 Cell Lysate
Lane 3: HT1080 Cell Lysate
Lane 4: JURKAT Cell Lysate
Lane 5: RAJI Cell Lysate
Lane 6: MCF-7 Cell Lysate

Anti-CETP Antibody - Background

CETP(Cholesteryl Ester Transfer Protein Plasma), is a plasma protein that facilitates the transport of cholesteryl esters and triglycerides between the lipoproteins. CETP is also known as lipid transfer protein I(Day et al., 1994). Sparkes et al.(1987) used a CETP probe against DNA from a human/mouse somatic cell hybrid panel to assign the CETP gene to chromosome 16. Because the role of CETP in atherosclerosis remained unclear, Okamoto et al.(2000) attempted to develop a potent, specific CETP inhibitor. One inhibitor, JTT-705, forms a disulfide bond with CETP and increases high density lipoprotein(HDL) cholesterol, decreases non-HDL cholesterol, and inhibits the progression of atherosclerosis in rabbits.