

Anti-Claudin 6 Antibody
Catalog # ABO11326**Specification**

Anti-Claudin 6 Antibody - Product Information

Application	WB
Primary Accession	P56747
Host	Rabbit
Reactivity	Human
Clonality	Polyclonal
Format	Lyophilized

Description

Rabbit IgG polyclonal antibody for Claudin-6(CLDN6) detection. Tested with WB in Human.

Reconstitution

Add 0.2ml of distilled water will yield a concentration of 500ug/ml.

Anti-Claudin 6 Antibody - Additional Information

Gene ID 9074

Other Names

Claudin-6, Skullin, CLDN6

Calculated MW

23292 MW KDa

Application Details

Western blot, 0.1-0.5 µg/ml, Human

Subcellular Localization

Cell junction, tight junction . Cell membrane ; Multi-pass membrane protein .

Tissue Specificity

Expressed in the liver, in peripheral blood mononuclear cells and hepatocarcinoma cell lines. .

Protein Name

Claudin-6

Contents

Each vial contains 5mg BSA, 0.9mg NaCl, 0.2mg Na₂HPO₄, 0.05mg Thimerosal, 0.05mg NaN₃.

Immunogen

A synthetic peptide corresponding to a sequence at the C-terminus of human Claudin 6(204-220aa APAISRGPSYPTKNYV).

Purification

Immunogen affinity purified.

Cross Reactivity

No cross reactivity with other proteins

Storage

At -20°C for one year. After reconstitution, at 4°C for one month. It can also be aliquotted and stored frozen at -20°C for a longer time. Avoid repeated freezing and thawing.

Sequence Similarities

Belongs to the claudin family.

Anti-Claudin 6 Antibody - Protein Information

Name CLDN6

Function

Plays a major role in tight junction-specific obliteration of the intercellular space.

Cellular Location

Cell junction, tight junction {ECO:0000250|UniProtKB:Q9Z262}. Cell membrane; Multi-pass membrane protein

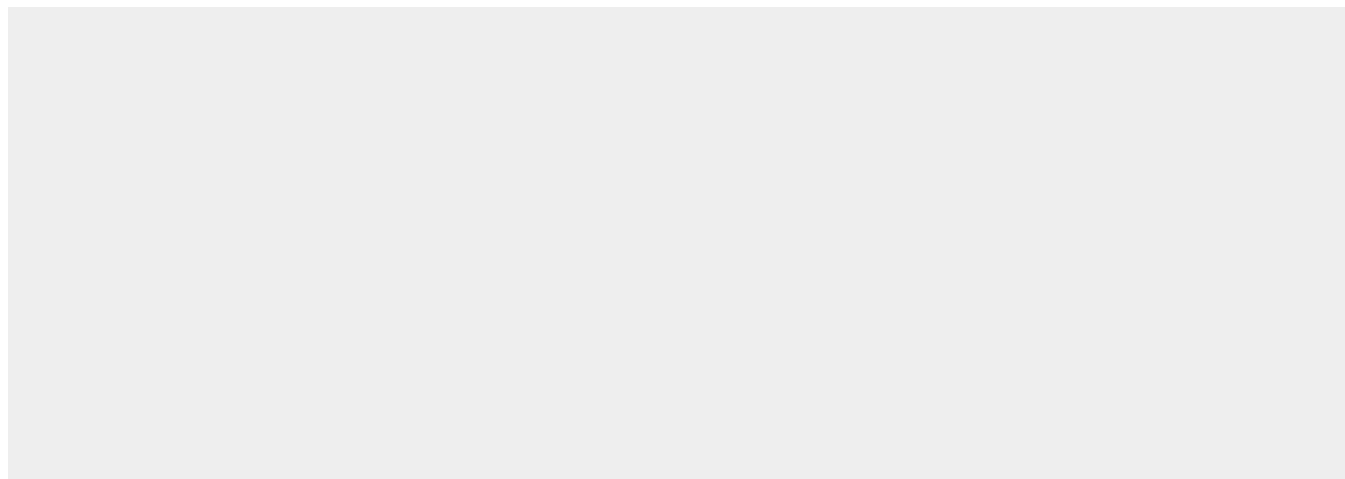
Tissue Location

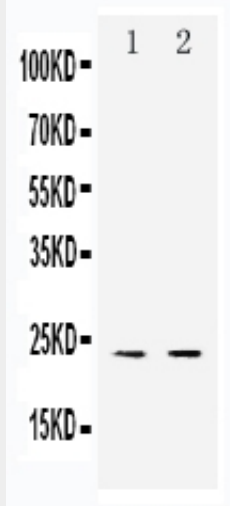
Expressed in the liver, in peripheral blood mononuclear cells and hepatocarcinoma cell lines

Anti-Claudin 6 Antibody - Protocols

Provided below are standard protocols that you may find useful for product applications.

- [Western Blot](#)
- [Blocking Peptides](#)
- [Dot Blot](#)
- [Immunohistochemistry](#)
- [Immunofluorescence](#)
- [Immunoprecipitation](#)
- [Flow Cytometry](#)
- [Cell Culture](#)

Anti-Claudin 6 Antibody - Images



Anti-Claudin 6 antibody, ABO11326, Western blotting Lane 1: HELA Cell Lysate Lane 2: SMMC Cell Lysate

Anti-Claudin 6 Antibody - Background

Claudin-6 is a protein that in humans is encoded by the CLDN6 gene. It belongs to the group of claudins. Tight junctions represent one mode of cell-to-cell adhesion in epithelial or endothelial cell sheets, forming continuous seals around cells and serving as a physical barrier to prevent solutes and water from passing freely through the paracellular space. These junctions are comprised of sets of continuous networking strands in the outwardly facing cytoplasmic leaflet, with complementary grooves in the inwardly facing extracytoplasmic leaflet. This gene encodes a component of tight junction strands, which is a member of the claudin family. The protein is an integral membrane protein and is one of the entry cofactors for hepatitis C virus. The gene methylation may be involved in esophageal tumorigenesis. This gene is adjacent to another family member CLDN9 on chromosome 16.