

Anti-p63 Antibody
Catalog # ABO11364**Specification**

Anti-p63 Antibody - Product Information

| | |
|-------------------|------------------------|
| Application | WB, IHC-P, ICC |
| Primary Accession | Q9H3D4 |
| Host | Rabbit |
| Reactivity | Human, Mouse, Rat |
| Clonality | Polyclonal |
| Format | Lyophilized |

Description

Rabbit IgG polyclonal antibody for Tumor protein 63(TP63) detection. Tested with WB, IHC-P, ICC in Human;Mouse;Rat.

Reconstitution

Add 0.2ml of distilled water will yield a concentration of 500ug/ml.

Anti-p63 Antibody - Additional Information

Gene ID 8626

Other Names

Tumor protein 63, p63, Chronic ulcerative stomatitis protein, CUSP, Keratinocyte transcription factor KET, Transformation-related protein 63, TP63, Tumor protein p73-like, p73L, p40, p51, TP63, KET, P63, P73H, P73L, TP73L

Calculated MW

76785 MW KDa

Application Details

Immunocytochemistry , 0.5-1 µg/ml, Human, Mouse,
Rat
Immunohistochemistry(Paraffin-embedded Section), 0.5-1 µg/ml, Human, Mouse, Rat, By
Heat
Western blot, 0.1-0.5 µg/ml, Human, Rat, Mouse

Subcellular Localization

Nucleus .

Tissue Specificity

Widely expressed, notably in heart, kidney, placenta, prostate, skeletal muscle, testis and thymus, although the precise isoform varies according to tissue type. Progenitor cell layers of skin, breast, eye and prostate express high levels of DeltaN-type isoforms. Isoform 10 is predominantly expressed in skin squamous cell carcinomas, but not in normal skin tissues. .

Protein Name

Tumor protein 63

Contents

Each vial contains 5mg BSA, 0.9mg NaCl, 0.2mg Na2HPO4, 0.05mg Thimerosal, 0.05mg NaN3.

Immunogen

A synthetic peptide corresponding to a sequence at the C-terminus of human p63(664-680aa DMDARRNKQQRIKEEGE), different from the related rat and mouse sequences by one amino acid.

Purification

Immunogen affinity purified.

Cross Reactivity

No cross reactivity with other proteins

Storage

At -20°C for one year. After reconstitution, at 4°C for one month. It can also be aliquotted and stored frozen at -20°C for a longer time. Avoid repeated freezing and thawing.

Sequence Similarities

Belongs to the p53 family.

Anti-p63 Antibody - Protein Information**Name** TP63**Synonyms** KET, P63, P73H, P73L, TP73L**Function**

Acts as a sequence specific DNA binding transcriptional activator or repressor. The isoforms contain a varying set of transactivation and auto-regulating transactivation inhibiting domains thus showing an isoform specific activity. Isoform 2 activates RIPK4 transcription. May be required in conjunction with TP73/p73 for initiation of p53/TP53 dependent apoptosis in response to genotoxic insults and the presence of activated oncogenes. Involved in Notch signaling by probably inducing JAG1 and JAG2. Plays a role in the regulation of epithelial morphogenesis. The ratio of DeltaN-type and TA*-type isoforms may govern the maintenance of epithelial stem cell compartments and regulate the initiation of epithelial stratification from the undifferentiated embryonal ectoderm. Required for limb formation from the apical ectodermal ridge. Activates transcription of the p21 promoter.

Cellular Location

Nucleus

Tissue Location

Widely expressed, notably in heart, kidney, placenta, prostate, skeletal muscle, testis and thymus, although the precise isoform varies according to tissue type. Progenitor cell layers of skin, breast, eye and prostate express high levels of DeltaN-type isoforms. Isoform 10 is predominantly expressed in skin squamous cell carcinomas, but not in normal skin tissues

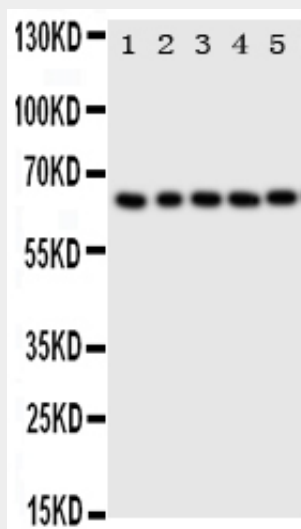
Anti-p63 Antibody - Protocols

Provided below are standard protocols that you may find useful for product applications.

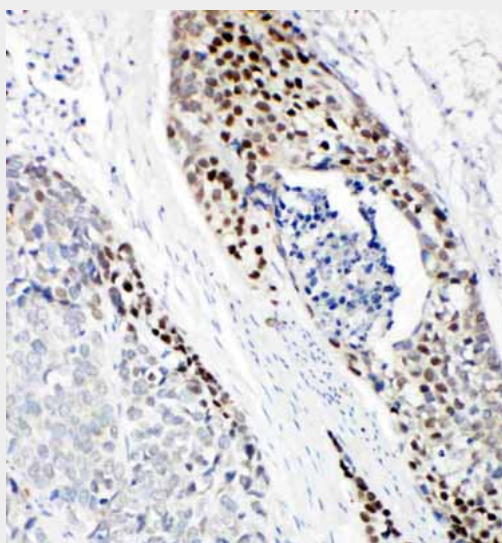
- [Western Blot](#)
- [Blocking Peptides](#)
- [Dot Blot](#)
- [Immunohistochemistry](#)

- [Immunofluorescence](#)
- [Immunoprecipitation](#)
- [Flow Cytometry](#)
- [Cell Culture](#)

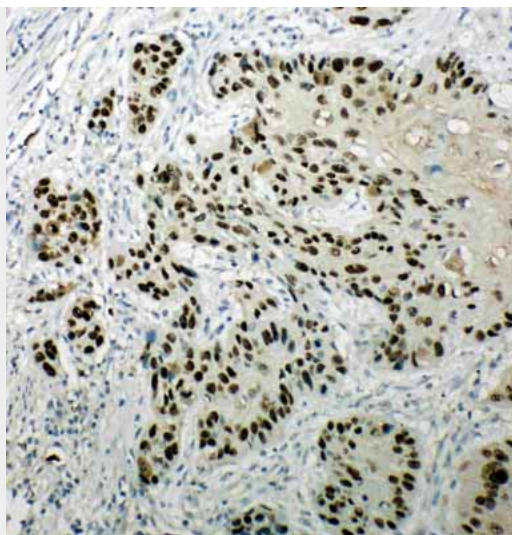
Anti-p63 Antibody - Images



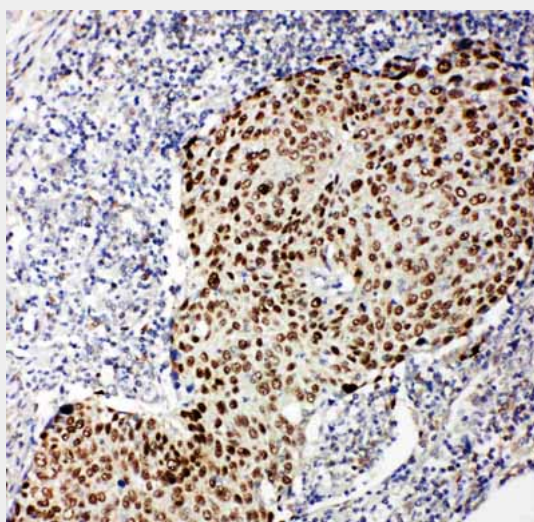
Anti-p63 antibody, ABO11364, Western blotting
Lane 1: HELA Cell Lysate
Lane 2: SMMC Cell Lysate
Lane 3: COLO320 Cell Lysate
Lane 4: A549 Cell Lysate
Lane 5: SGC Cell Lysate



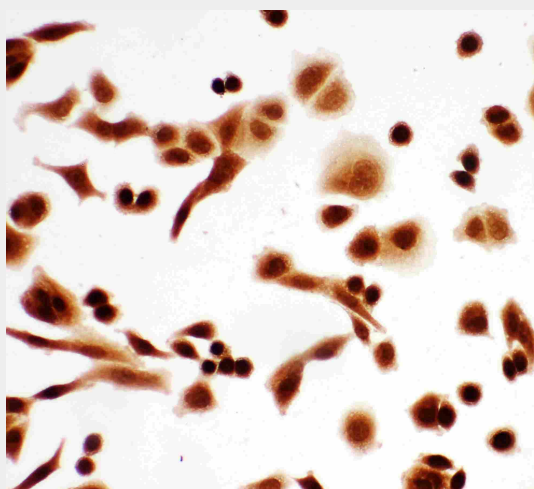
Anti-p63 antibody, ABO11364, IHC(P)
IHC(P): Human Esophageal Squamous Cell Carcinoma Tissue



Anti-p63 antibody, ABO11364, IHC(P)IHC(P): Human Esophageal Squamous Cell Carcinoma Tissue



Anti-p63 antibody, ABO11364, IHC(P)IHC(P): Human Lung Cancer Tissue



Anti-p63 antibody, ABO11364, ICCICC: A549 Cell

Anti-p63 Antibody - Background

TP63(Tumor Protein p63), also known as KET, is a protein that in humans is encoded by the TP63 gene. Yang et al.(1998) described the cloning of tumor protein p63, which shows strong homology to the tumor suppressor p53 and the p53-related protein p73. By fluorescence in situ hybridization, Yang et al.(1998) localized the human TP63 gene to chromosome 3q27-q29. Hibi et al.(2000) stated that p53 homologs known variously as p40, p51, p63, and p73L(Trink et al., 1998, Yang et al., 1998, Osada et al., 1998, Senoo et al., 1998) are isoforms of the same gene, which Hibi et al.(2000) referred to as AIS for amplified in squamous cell carcinoma.