

Anti-Factor VIII Antibody
Catalog # ABO11368**Specification**

Anti-Factor VIII Antibody - Product Information

| | |
|-------------------|------------------------|
| Application | WB |
| Primary Accession | P00451 |
| Host | Rabbit |
| Reactivity | Human |
| Clonality | Polyclonal |
| Format | Lyophilized |

Description

Rabbit IgG polyclonal antibody for Coagulation factor VIII(F8) detection. Tested with WB in Human.

Reconstitution

Add 0.2ml of distilled water will yield a concentration of 500ug/ml.

Anti-Factor VIII Antibody - Additional Information

Gene ID 2157

Other Names

Coagulation factor VIII, Antihemophilic factor, AHF, Procoagulant component, Factor VIIIa heavy chain, 200 kDa isoform, Factor VIIIa heavy chain, 92 kDa isoform, Factor VIII B chain, Factor VIIIa light chain, F8, F8C

Calculated MW

267009 MW KDa

Application Details

Western blot, 0.1-0.5 µg/ml, Human

Subcellular Localization

Secreted, extracellular space.

Protein Name

Coagulation factor VIII

Contents

Each vial contains 5mg BSA, 0.9mg NaCl, 0.2mg Na₂HPO₄, 0.05mg Thimerosal, 0.05mg NaN₃.

Immunogen

A synthetic peptide corresponding to a sequence in the middle region of human Factor VIII(1264-1278aa APVLQDFRSLNDSTN).

Purification

Immunogen affinity purified.

Cross Reactivity

No cross reactivity with other proteins

Storage

At -20°C for one year. After reconstitution, at 4°C for one month. It can also be aliquotted and stored frozen at -20°C for a longer time. Avoid repeated freezing and thawing.

Sequence Similarities

Belongs to the multicopper oxidase family.

Anti-Factor VIII Antibody - Protein Information

Name F8

Synonyms F8C

Function

Factor VIII, along with calcium and phospholipid, acts as a cofactor for F9/factor IXa when it converts F10/factor X to the activated form, factor Xa.

Cellular Location

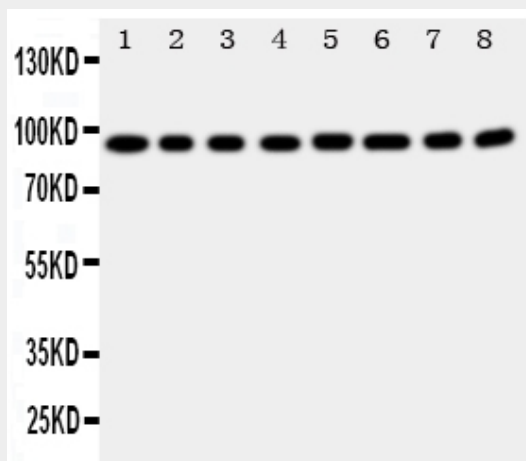
Secreted, extracellular space.

Anti-Factor VIII Antibody - Protocols

Provided below are standard protocols that you may find useful for product applications.

- [Western Blot](#)
- [Blocking Peptides](#)
- [Dot Blot](#)
- [Immunohistochemistry](#)
- [Immunofluorescence](#)
- [Immunoprecipitation](#)
- [Flow Cytometry](#)
- [Cell Culture](#)

Anti-Factor VIII Antibody - Images



Anti-Factor VIII antibody, ABO11368, Western blotting
Lane 1: A431 Cell Lysate
Lane 2: HELA Cell Lysate
Lane 3: SMMC Cell Lysate
Lane 4: JURKAT Cell Lysate
Lane 5: RAJI Cell Lysate
Lane 6: CEM Cell Lysate
Lane 7: HL-60 Cell Lysate
Lane 8: MCF-7 Cell Lysate

Anti-Factor VIII Antibody - Background

Coagulation Factor VIII(FVIII) is an essential blood-clotting protein, also known as anti-hemophilic factor(AHF). By in situ hybridization, Tantravahi et al.(1986) concluded that the F8 gene is located in the proximal part of chromosome Xq28 with probes DX13 and St14 distally located. The F8 gene encodes coagulation factor VIII, a large plasma glycoprotein that functions in the blood coagulation cascade as a cofactor for the factor IXa-dependent activation of factor X(F10). Factor VIII is activated proteolytically by a variety of coagulation enzymes, including thrombin(F2). Factor VIII is tightly associated in the blood with von Willebrand factor(VWF), which serves as a protective carrier protein for factor VIII(Toole et al., 1984; Hoyer, 1994).