

Anti-Annexin VII Antibody
Catalog # ABO11382**Specification**

Anti-Annexin VII Antibody - Product Information

Application	WB, IHC-P
Primary Accession	P20073
Host	Rabbit
Reactivity	Human, Mouse, Rat
Clonality	Polyclonal
Format	Lyophilized

Description

Rabbit IgG polyclonal antibody for Annexin A7 (ANXA7) detection. Tested with WB, IHC-P in Human; Mouse; Rat.

Reconstitution

Add 0.2ml of distilled water will yield a concentration of 500ug/ml.

Anti-Annexin VII Antibody - Additional Information

Gene ID 310

Other Names

Annexin A7, Annexin VII, Annexin-7, Synexin, ANXA7, ANX7, SNX

Calculated MW

52739 MW KDa

Application Details

Immunohistochemistry (Paraffin-embedded Section), 0.5-1 µg/ml, Human, Mouse, Rat, By Heat
Western blot, 0.1-0.5 µg/ml, Human, Rat, Mouse

Tissue Specificity

Isoform 1 is expressed in brain, heart and skeletal muscle. Isoform 2 is more abundant in liver, lung, kidney, spleen, fibroblasts and placenta. .

Protein Name

Annexin A7

Contents

Each vial contains 5mg BSA, 0.9mg NaCl, 0.2mg Na₂HPO₄, 0.05mg Thimerosal, 0.05mg NaN₃.

Immunogen

A synthetic peptide corresponding to a sequence at the C-terminus of human Annexin VII (445-460aa TRSEIDL VQIKQMFAQ), different from the related mouse and rat sequences by one amino acid.

Purification

Immunogen affinity purified.

Cross Reactivity

No cross reactivity with other proteins

Storage

At -20°C for one year. After reconstitution, at 4°C for one month. It can also be aliquotted and stored frozen at -20°C for a longer time. Avoid repeated freezing and thawing.

Sequence Similarities

Belongs to the annexin family.

Anti-Annexin VII Antibody - Protein Information

Name ANXA7

Synonyms ANX7, SNX

Function

Calcium/phospholipid-binding protein which promotes membrane fusion and is involved in exocytosis.

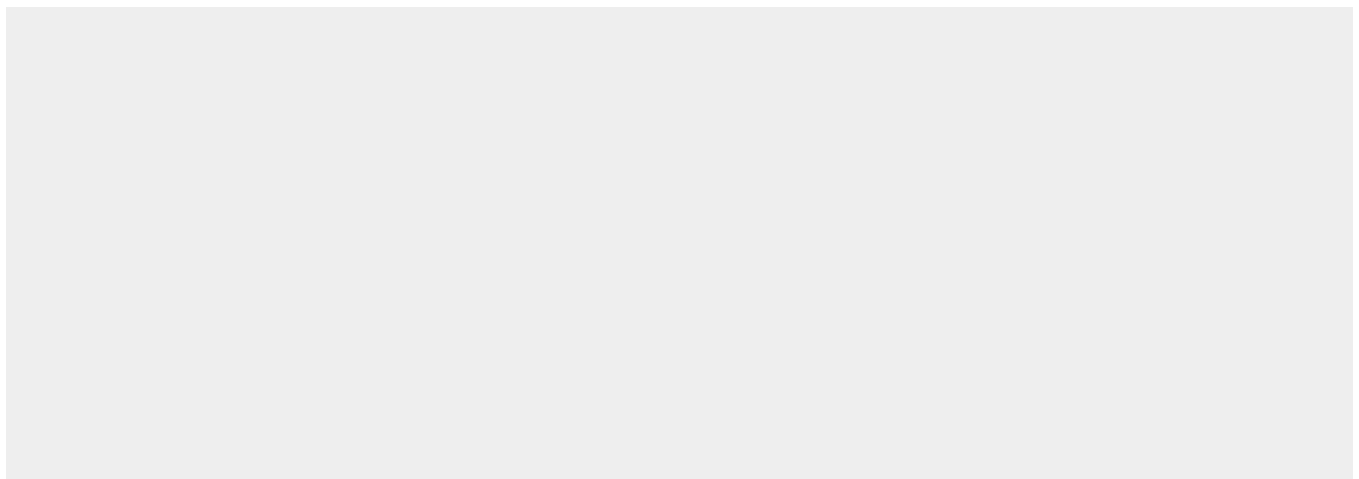
Tissue Location

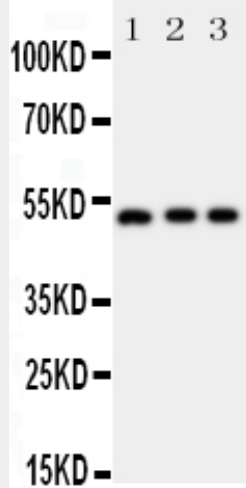
Isoform 1 is expressed in brain, heart and skeletal muscle. Isoform 2 is more abundant in liver, lung, kidney, spleen, fibroblasts and placenta.

Anti-Annexin VII Antibody - Protocols

Provided below are standard protocols that you may find useful for product applications.

- [Western Blot](#)
- [Blocking Peptides](#)
- [Dot Blot](#)
- [Immunohistochemistry](#)
- [Immunofluorescence](#)
- [Immunoprecipitation](#)
- [Flow Cytometry](#)
- [Cell Culture](#)

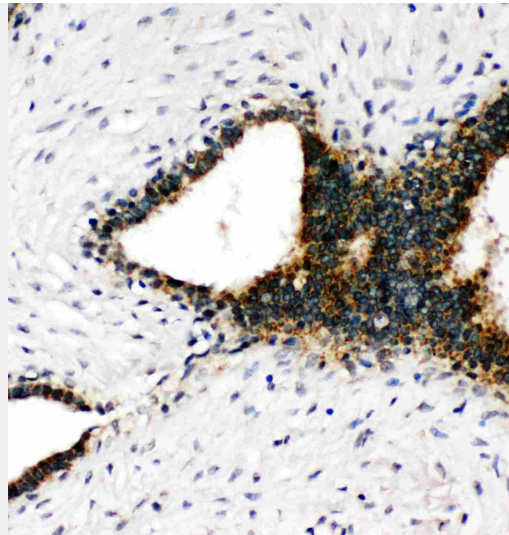
Anti-Annexin VII Antibody - Images



Anti-Annexin VII antibody, ABO11382, Western blotting All lanes: Anti Annexin VII (ABO11382) at 0.5ug/ml
Lane 1: Rat Skeletal Muscle Tissue Lysate at 50ug
Lane 2: SMMC Whole Cell Lysate at 40ug
Lane 3: COLO320 Whole Cell Lysate at 40ug
Predicted bind size: 52KD
Observed bind size: 52KD



Anti-Annexin VII antibody, ABO11382, Western blotting All lanes: Anti Annexin VII (ABO11382) at 0.5ug/ml
Lane 1: Rat Skeletal Muscle Tissue Lysate at 50ug
Lane 2: HELA Whole Cell Lysate at 40ug
Lane 3: A549 Whole Cell Lysate at 40ug
Lane 4: SMMC Whole Cell Lysate at 40ug
Lane 5: HT1080 Whole Cell Lysate at 40ug
Predicted bind size: 52KD
Observed bind size: 52KD



Anti-Annexin VII antibody, ABO11382, IHC(P)IHC(P): Human Mammary Cancer Tissue

Anti-Annexin VII Antibody - Background

ANXA7(Annexin A7), also known as ANX7 or SNX, is a protein that in humans is encoded by the ANXA7 gene. Annexin VII is a member of the annexin family of calcium-dependent phospholipid binding proteins. Shirvan et al.(1994) isolated genomic clones of the ANXA7 gene and assigned the gene to 10q21.1-q21.2 by study of somatic cell hybrids and by in situ hybridization. Srivastava et al.(2001) concluded that the ANX7 gene exhibits many biologic and genetic properties expected of a tumor suppressor gene and may play a role in prostate cancer progression. Caohuy et al.(1996) present experimental evidence, based on studies of recombinant human ANXA7 and isolated bovine chromaffin cells, that ANXA7 is a Ca^{2+} -dependent GTP binding protein. ANXA7 was active in a chromaffin granule aggregation assays in the presence of Ca^{2+} and GTP, and was deactivated upon GTP hydrolysis.