

Anti-Annexin A10 Antibody
Catalog # ABO11383**Specification**

Anti-Annexin A10 Antibody - Product Information

Application	WB, IHC-P
Primary Accession	Q9UJ72
Host	Rabbit
Reactivity	Human, Rat
Clonality	Polyclonal
Format	Lyophilized

Description

Rabbit IgG polyclonal antibody for Annexin A10(ANXA10) detection. Tested with WB, IHC-P in Human;Rat.

Reconstitution

Add 0.2ml of distilled water will yield a concentration of 500ug/ml.

Anti-Annexin A10 Antibody - Additional Information

Gene ID 11199

Other Names

Annexin A10, Annexin-10, Annexin-14, ANXA10, ANX14

Calculated MW

37278 MW KDa

Application Details

Immunohistochemistry(Paraffin-embedded Section), 0.5-1 µg/ml, Human, Rat, By Heat
Western blot, 0.1-0.5 µg/ml, Human, Rat

Protein Name

Annexin A10

Contents

Each vial contains 5mg BSA, 0.9mg NaCl, 0.2mg Na₂HPO₄, 0.05mg Thimerosal, 0.05mg NaN₃.

Immunogen

A synthetic peptide corresponding to a sequence at the C-terminus of human Annexin A10(308-324aa HYKKALLAICAGDAEDY), different from the related mouse sequence by two amino acids, and from the related rat sequence by one amino acid.

Purification

Immunogen affinity purified.

Cross Reactivity

No cross reactivity with other proteins

Storage

At -20°C for one year. After reconstitution, at 4°C for one month. It can also be aliquotted and stored frozen at -20°C for a longer time. Avoid repeated freezing and thawing.

Sequence Similarities

Belongs to the annexin family.

Anti-Annexin A10 Antibody - Protein Information

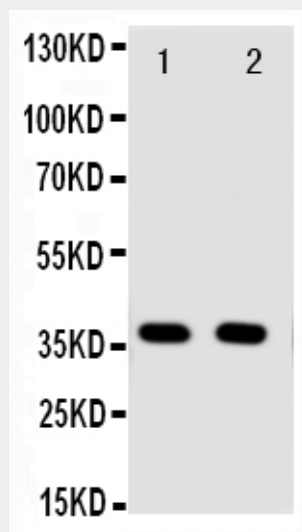
Name ANXA10

Synonyms ANX14

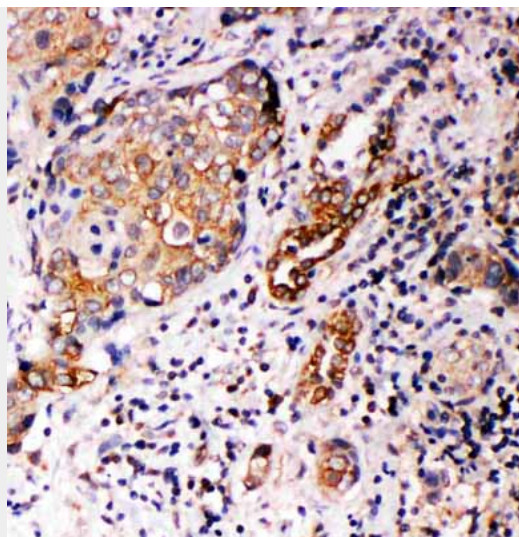
Anti-Annexin A10 Antibody - Protocols

Provided below are standard protocols that you may find useful for product applications.

- [Western Blot](#)
- [Blocking Peptides](#)
- [Dot Blot](#)
- [Immunohistochemistry](#)
- [Immunofluorescence](#)
- [Immunoprecipitation](#)
- [Flow Cytometry](#)
- [Cell Culture](#)

Anti-Annexin A10 Antibody - Images

Anti-Annexin A10 antibody, ABO11383, Western blotting
Lane 1: A549 Cell Lysate
Lane 2: A549 Cell Lysate



Anti-Annexin A10 antibody, ABO11383, IHC(P)IHC(P): Human Lung Cancer Tissue

Anti-Annexin A10 Antibody - Background

ANXA10(Annexin A10) is a member of the annexin family of calcium-dependent phospholipid-binding proteins. By FISH, Morgan et al.(1999) mapped the ANXA10 gene to chromosome 4q33. Morgan et al.(1999) suggested that the ablation or depletion of principal calcium-binding sites in annexins A9 and A10, respectively, may dispose them to function in distinct tissue environments where calcium sensitivity is not a major functional determinant.