

**Anti-CXCR1 Antibody**  
**Catalog # ABO11386****Specification**

---

**Anti-CXCR1 Antibody - Product Information**

Application	WB, IHC
Primary Accession	<a href="#">P25024</a>
Host	Rabbit
Reactivity	Human
Clonality	Polyclonal
Format	Lyophilized

**Description**

Rabbit IgG polyclonal antibody for C-X-C chemokine receptor type 1(CXCR1) detection. Tested with WB, IHC-P in Human.

**Reconstitution**

Add 0.2ml of distilled water will yield a concentration of 500ug/ml.

**Anti-CXCR1 Antibody - Additional Information**

**Gene ID** 3577

**Other Names**

C-X-C chemokine receptor type 1, CXC-R1, CXCR-1, CDw128a, High affinity interleukin-8 receptor A, IL-8R A, IL-8 receptor type 1, CD181, CXCR1, CMKAR1, IL8RA

**Calculated MW**

39791 MW KDa

**Application Details**

Immunohistochemistry(Paraffin-embedded Section), 0.5-1 µg/ml, Human, By Heat<br>Western blot, 0.1-0.5 µg/ml, Human<br>

**Subcellular Localization**

Cell membrane; Multi-pass membrane protein.

**Protein Name**

C-X-C chemokine receptor type 1

**Contents**

Each vial contains 5mg BSA, 0.9mg NaCl, 0.2mg Na<sub>2</sub>HPO<sub>4</sub>, 0.05mg Thimerosal, 0.05mg NaN<sub>3</sub>.

**Immunogen**

A synthetic peptide corresponding to a sequence at the N-terminus of human CXCR1(24-38aa DEDYSPCMLETETLN).

**Purification**

Immunogen affinity purified.

**Cross Reactivity**

No cross reactivity with other proteins

**Storage**

**At -20°C for one year. After reconstitution, at 4°C for one month. It can also be aliquotted and stored frozen at -20°C for a longer time. Avoid repeated freezing and thawing.**

**Sequence Similarities**

Belongs to the G-protein coupled receptor 1 family.

**Anti-CXCR1 Antibody - Protein Information**

**Name** CXCR1

**Synonyms** CMKAR1, IL8RA

**Function**

Receptor to interleukin-8, which is a powerful neutrophils chemotactic factor (PubMed:<a href="http://www.uniprot.org/citations/1840701" target="\_blank">1840701</a>). Binding of IL-8 to the receptor causes activation of neutrophils. This response is mediated via a G- protein that activates a phosphatidylinositol-calcium second messenger system (PubMed:<a href="http://www.uniprot.org/citations/8662698" target="\_blank">8662698</a>).

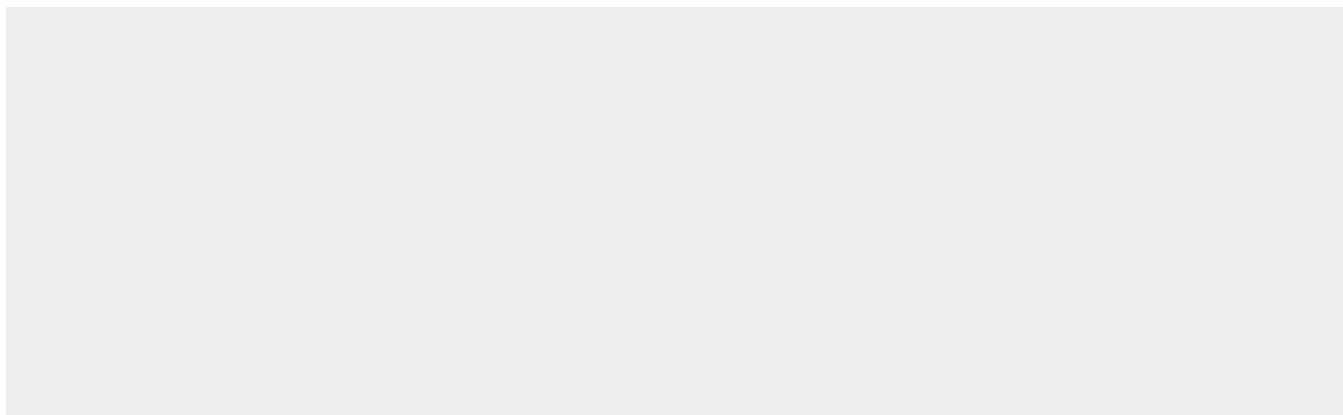
**Cellular Location**

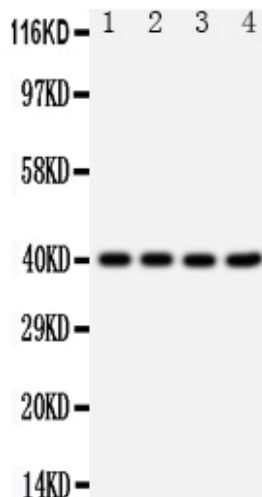
Cell membrane; Multi-pass membrane protein.

**Anti-CXCR1 Antibody - Protocols**

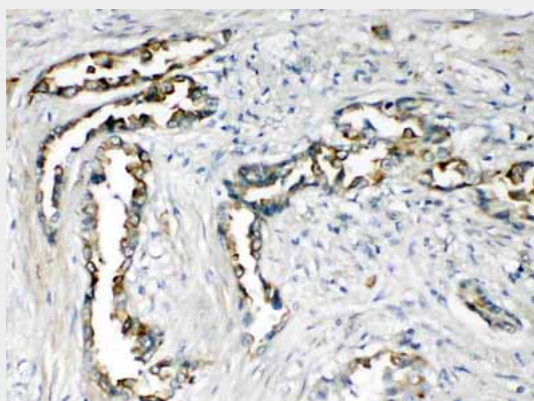
Provided below are standard protocols that you may find useful for product applications.

- [Western Blot](#)
- [Blocking Peptides](#)
- [Dot Blot](#)
- [Immunohistochemistry](#)
- [Immunofluorescence](#)
- [Immunoprecipitation](#)
- [Flow Cytometry](#)
- [Cell Culture](#)

**Anti-CXCR1 Antibody - Images**



Anti-CXCR1 antibody, ABO11386, Western blotting All lanes: Anti CXCR1 (ABO11386) at 0.5ug/ml Lane 1: HELA Whole Cell Lysate at 40ug Lane 2: COLO320 Whole Cell Lysate at 40ug Lane 3: M231 Whole Cell Lysate at 40ug Lane 4: HT1080 Whole Cell Lysate at 40ug Predicted bind size: 40KD Observed bind size: 40KD



Anti-CXCR1 antibody, ABO11386, IHC(P) IHC(P): Human Lung Cancer Tissue

### Anti-CXCR1 Antibody - Background

CXCR1 (Chemokine, CXC Motif, Receptor 1), also known as IL8RA or IL8R1, is a chemokine receptor. IL8RA is its human gene. Morris et al. (1992) mapped the IL8RA gene to chromosome 2q35. Hartl et al. (2007) concluded that CXCR1 cleavage and its functional consequences represent an important pathophysiologic mechanism in CF and other neutrophilic airway diseases. Receptor to interleukin-8, which is a powerful neutrophils chemotactic factor. Binding of IL-8 to the receptor causes activation of neutrophils. This response is mediated via a G-protein that activates a phosphatidylinositol-calcium second messenger system. This receptor binds to IL-8 with a high affinity and to MGSA (GRO) with a low affinity.