

**Anti-ProProtein Convertase 2 Antibody**  
**Catalog # ABO11392****Specification**

---

**Anti-ProProtein Convertase 2 Antibody - Product Information**

Application	WB, IHC-P
Primary Accession	<a href="#">P16519</a>
Host	Rabbit
Reactivity	Human, Mouse, Rat
Clonality	Polyclonal
Format	Lyophilized

**Description**

Rabbit IgG polyclonal antibody for Neuroendocrine convertase 2(PCSK2) detection. Tested with WB, IHC-P in Human;Mouse;Rat.

**Reconstitution**

Add 0.2ml of distilled water will yield a concentration of 500ug/ml.

**Anti-ProProtein Convertase 2 Antibody - Additional Information**

**Gene ID** 5126

**Other Names**

Neuroendocrine convertase 2, NEC 2, 3.4.21.94, KEX2-like endoprotease 2, Prohormone convertase 2, Proprotein convertase 2, PC2, PCSK2, NEC2

**Calculated MW**

70565 MW KDa

**Application Details**

Immunohistochemistry(Paraffin-embedded Section), 0.5-1 µg/ml, Human, Rat, Mouse, By Heat<br>Western blot, 0.1-0.5 µg/ml, Human, Mouse, Rat<br>

**Subcellular Localization**

Cytoplasmic vesicle, secretory vesicle. Localized in the secretion granules.

**Protein Name**

Neuroendocrine convertase 2

**Contents**

Each vial contains 5mg BSA, 0.9mg NaCl, 0.2mg Na<sub>2</sub>HPO<sub>4</sub>, 0.05mg Thimerosal, 0.05mg NaN<sub>3</sub>.

**Immunogen**

A synthetic peptide corresponding to a sequence at the N-terminus of human Proprotein Convertase 2(110-125aa GYRDINEIDINMNDPL), identical to the related mouse and rat sequences.

**Purification**

Immunogen affinity purified.

**Cross Reactivity**

No cross reactivity with other proteins

**Storage**

**At -20°C for one year. After reconstitution, at 4°C for one month. It can also be aliquotted and stored frozen at -20°C for a longer time. Avoid repeated freezing and thawing.**

**Sequence Similarities**

Belongs to the peptidase S8 family. Furin subfamily.

**Anti-Protein Convertase 2 Antibody - Protein Information**

**Name** PCSK2

**Synonyms** NEC2

**Function**

Serine endopeptidase which is involved in the processing of hormone and other protein precursors at sites comprised of pairs of basic amino acid residues. Responsible for the release of glucagon from proglucagon in pancreatic A cells.

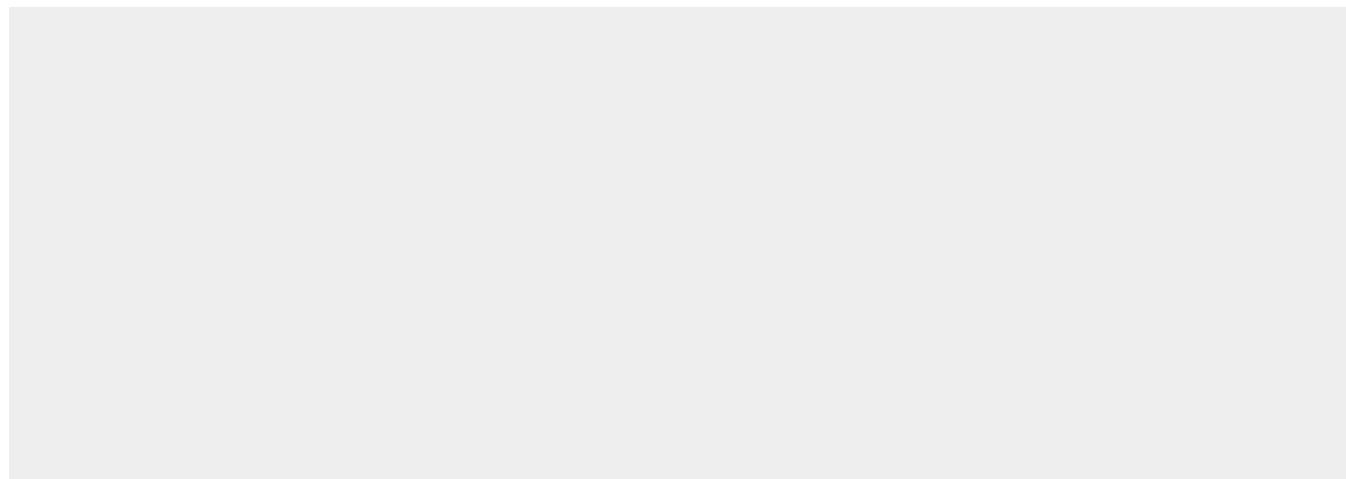
**Cellular Location**

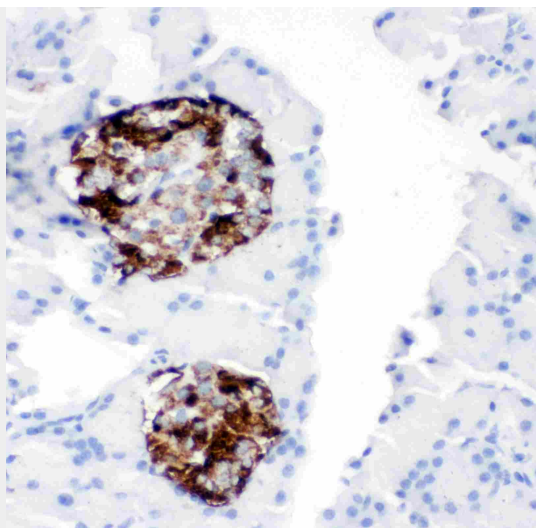
Cytoplasmic vesicle, secretory vesicle. Secreted. Note=Localized in the secretion granules

**Anti-Protein Convertase 2 Antibody - Protocols**

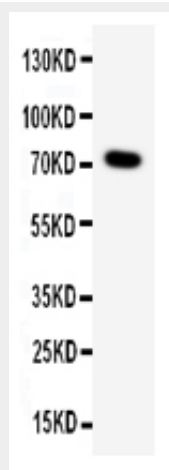
Provided below are standard protocols that you may find useful for product applications.

- [Western Blot](#)
- [Blocking Peptides](#)
- [Dot Blot](#)
- [Immunohistochemistry](#)
- [Immunofluorescence](#)
- [Immunoprecipitation](#)
- [Flow Cytometry](#)
- [Cell Culture](#)

**Anti-Protein Convertase 2 Antibody - Images**



Anti-Proprotein Convertase 2 antibody, ABO11392, IHC(P)IHC(P): Rat Pancreas Tissue



Anti-Proprotein Convertase 2 antibody, ABO11392, Western blottingAll lanes: Anti Proprotein Convertase 2 (ABO11392) at 0.5ug/mlWB: PANC Whole Cell Lysate at 40ugPredicted bind size: 71KDObserved bind size: 71KD

### Anti-ProProtein Convertase 2 Antibody - Background

PCSK2(Proprotein Convertase, Subtilisin/Kexin-Type, 2), also known as PC2 or NEC2, is an enzyme responsible for the first step in the maturation of many neuroendocrine peptides from their precursors, such as the conversion of proinsulin to insulin intermediates. Seidah et al.(1991) mapped the NEC2 gene to human chromosome 20p11.2-p11.1. Ohagi et al.(1992) observed expression of the chloramphenicol acetyltransferase reporter fusions containing the putative promoter region in insulinoma cells but not in hepatoma cells, consistent with the known tissue-specific pattern of expression of the PC2 gene. Analysis of the level of CAT activity with several deletion mutants identified the region from -1100 to -539 from the translation start site as essential for PC2 promoter activity.