

**Anti-Bcl2A1 Antibody**  
**Catalog # ABO11408****Specification**

---

**Anti-Bcl2A1 Antibody - Product Information**

Application	WB
Primary Accession	<a href="#">Q16548</a>
Host	Rabbit
Reactivity	Human
Clonality	Polyclonal
Format	Lyophilized

**Description**

Rabbit IgG polyclonal antibody for Bcl-2-related protein A1(BCL2A1) detection. Tested with WB in Human.

**Reconstitution**

Add 0.2ml of distilled water will yield a concentration of 500ug/ml.

**Anti-Bcl2A1 Antibody - Additional Information**

**Gene ID** 597

**Other Names**

Bcl-2-related protein A1, Bcl-2-like protein 5, Bcl2-L-5, Hemopoietic-specific early response protein, Protein BFL-1, Protein GRS, BCL2A1, BCL2L5, BFL1, GRS, HBPA1

**Calculated MW**

20132 MW KDa

**Application Details**

Western blot, 0.1-0.5 µg/ml, Human<br>

**Subcellular Localization**

Cytoplasm.

**Tissue Specificity**

Seems to be restricted to the hematopoietic compartment. Expressed in peripheral blood, spleen, and bone marrow, at moderate levels in lung, small intestine and testis, at a minimal levels in other tissues. Also found in vascular smooth muscle cells and hematopoietic malignancies.

**Protein Name**

Bcl-2-related protein A1

**Contents**

Each vial contains 5mg BSA, 0.9mg NaCl, 0.2mg Na<sub>2</sub>HPO<sub>4</sub>, 0.05mg Thimerosal, 0.05mg NaN<sub>3</sub>.

**Immunogen**

A synthetic peptide corresponding to a sequence at the N-terminus of human Bcl2A1(1-16aa MTDCEFGYIYRLAQDY).

**Purification**

Immunogen affinity purified.

**Cross Reactivity**

No cross reactivity with other proteins

**Storage**

**At -20°C for one year. After reconstitution, at 4°C for one month. It can also be aliquotted and stored frozen at -20°C for a longer time. Avoid repeated freezing and thawing.**

**Anti-Bcl2A1 Antibody - Protein Information**

**Name** BCL2A1

**Synonyms** BCL2L5, BFL1, GRS, HBPA1

**Function**

Retards apoptosis induced by IL-3 deprivation. May function in the response of hemopoietic cells to external signals and in maintaining endothelial survival during infection (By similarity). Can inhibit apoptosis induced by serum starvation in the mammary epithelial cell line HC11 (By similarity).

**Cellular Location**

Cytoplasm.

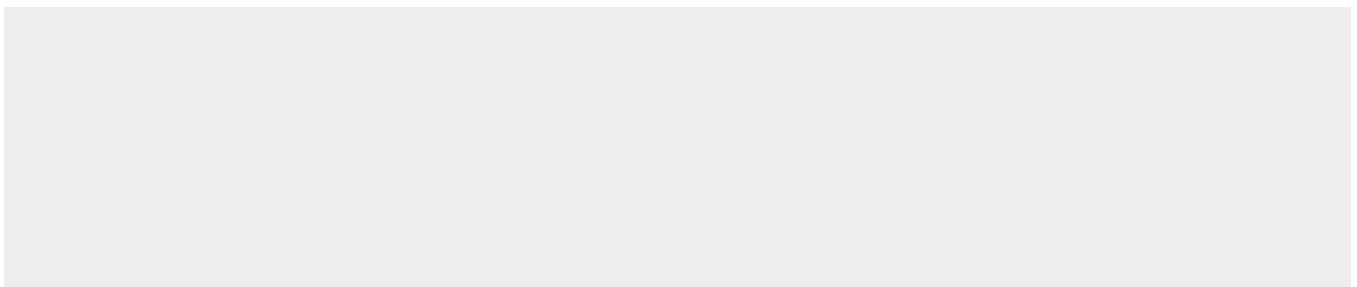
**Tissue Location**

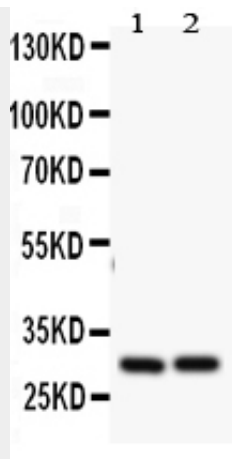
Seems to be restricted to the hematopoietic compartment. Expressed in peripheral blood, spleen, and bone marrow, at moderate levels in lung, small intestine and testis, at a minimal levels in other tissues. Also found in vascular smooth muscle cells and hematopoietic malignancies

**Anti-Bcl2A1 Antibody - Protocols**

Provided below are standard protocols that you may find useful for product applications.

- [Western Blot](#)
- [Blocking Peptides](#)
- [Dot Blot](#)
- [Immunohistochemistry](#)
- [Immunofluorescence](#)
- [Immunoprecipitation](#)
- [Flow Cytometry](#)
- [Cell Culture](#)

**Anti-Bcl2A1 Antibody - Images**



Anti- Bcl2A1 antibody, ABO11408, Western blotting  
All lanes: Anti Bcl2A1(ABO11408) at 0.5ug/ml  
Lane 1: HELA Whole Cell Lysate at 40ug  
Lane 2: JURKAT Whole Cell Lysate at 40ug  
Predicted bind size: 30KD  
Observed bind size: 30KD

### Anti-Bcl2A1 Antibody - Background

Bcl-2-related protein A1(BCL2A1), is the human homolog of the murine A1, and maps to chromosome 15q24.3. The BCL2A1 gene has also been referred to as BCL2L5, BFL1, and GRS. Bfl-1 protein suppresses apoptosis induced by the p53 tumor suppressor protein in a manner similar to other Bcl-2 family members such as Bcl-2, Bcl-xL and EBV-BHRF1. In addition, the bfl-I gene cooperates efficiently with the Ela oncogene in transformation of primary rodent epithelial cells. The human bfl-1 gene may play an important role in carcinogenesis.