

Anti-Cystatin A Antibody
Catalog # ABO11411**Specification**

Anti-Cystatin A Antibody - Product Information

Application	WB, IHC-P
Primary Accession	P01040
Host	Rabbit
Reactivity	Human
Clonality	Polyclonal
Format	Lyophilized

Description

Rabbit IgG polyclonal antibody for Cystatin-A(CSTA) detection. Tested with WB, IHC-P in Human.

Reconstitution

Add 0.2ml of distilled water will yield a concentration of 500ug/ml.

Anti-Cystatin A Antibody - Additional Information

Gene ID 1475

Other Names

Cystatin-A, Cystatin-AS, Stefin-A, Cystatin-A, N-terminally processed, CSTA, STF1, STFA

Calculated MW

11006 MW KDa

Application Details

Immunohistochemistry(Paraffin-embedded Section), 0.5-1 µg/ml, Human, By Heat
Western blot, 0.1-0.5 µg/ml, Human

Subcellular Localization

Cytoplasm .

Tissue Specificity

Expressed in the skin throughout the epidermis. .

Protein Name

Cystatin-A

Contents

Each vial contains 5mg BSA, 0.9mg NaCl, 0.2mg Na₂HPO₄, 0.05mg Thimerosal, 0.05mg NaN₃.

Immunogen

A synthetic peptide corresponding to a sequence at the C-terminus of human Cystatin A(77-90aa NEDLVLTGYQVDKN).

Purification

Immunogen affinity purified.

Cross Reactivity

No cross reactivity with other proteins

Storage

At -20°C for one year. After reconstitution, at 4°C for one month. It can also be aliquotted and stored frozen at -20°C for a longer time. Avoid repeated freezing and thawing.

Sequence Similarities

Belongs to the cystatin family.

Anti-Cystatin A Antibody - Protein Information

Name CSTA

Synonyms STF1, STFA

Function

This is an intracellular thiol proteinase inhibitor. Has an important role in desmosome-mediated cell-cell adhesion in the lower levels of the epidermis.

Cellular Location

Cytoplasm.

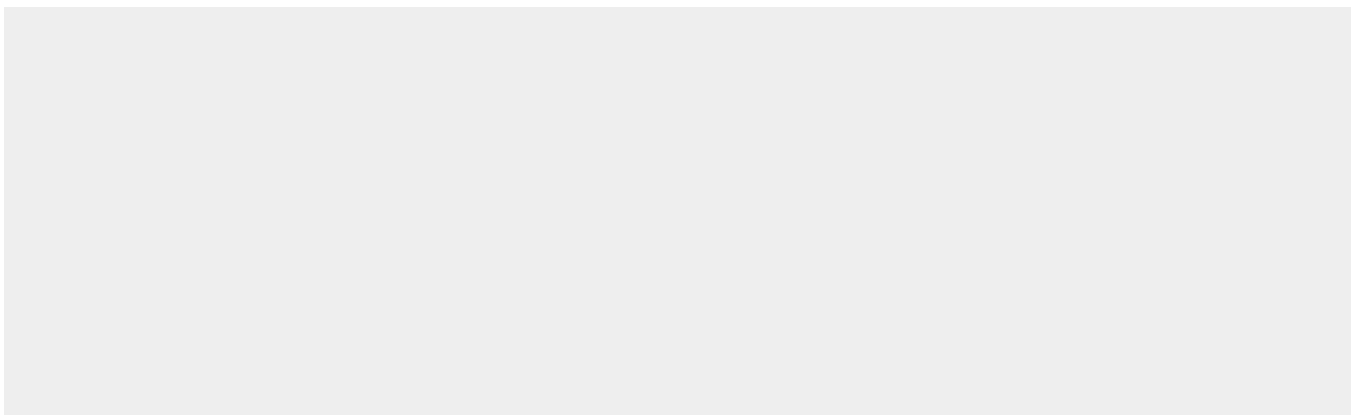
Tissue Location

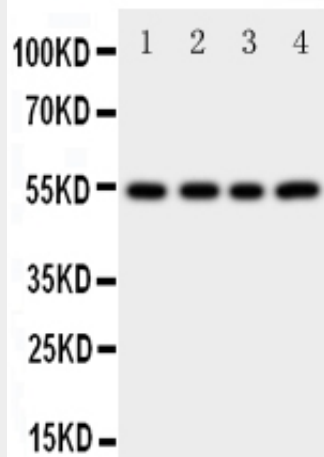
Expressed in the skin throughout the epidermis.

Anti-Cystatin A Antibody - Protocols

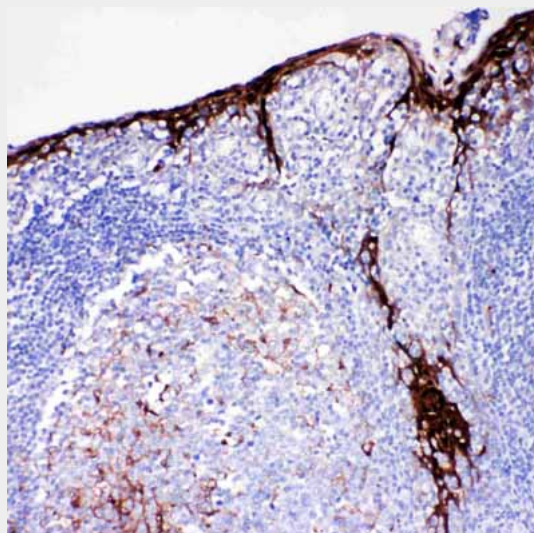
Provided below are standard protocols that you may find useful for product applications.

- [Western Blot](#)
- [Blocking Peptides](#)
- [Dot Blot](#)
- [Immunohistochemistry](#)
- [Immunofluorescence](#)
- [Immunoprecipitation](#)
- [Flow Cytometry](#)
- [Cell Culture](#)

Anti-Cystatin A Antibody - Images



Anti-Cystatin A antibody, ABO11411, Western blotting Recombinant Protein Detection Source: E.coli derived -recombinant Human CSTA, 45.0KD(M1-F98+unrelated protein,311aa) Lane 1: Recombinant Human CSTA Protein 10ng Lane 2: Recombinant Human CSTA Protein 5ng Lane 3: Recombinant Human CSTA Protein 2.5ng Lane 4: Recombinant Human CSTA Protein 1.25ng



Anti-Cystatin A antibody, ABO11411, IHC(P) IHC(P): Human Tonsil Tissue

Anti-Cystatin A Antibody - Background

Cystatin A also called Stefin A is a protein that in humans is encoded by the CSTA gene. Cystatin A is a cysteine proteinase inhibitor that belongs to family 1 of the cystatin superfamily. This gene was assigned to human chromosome 3q21.1. This is an intracellular thiol proteinase inhibitor. Cystatin A plays an important role in desmosome-mediated cell-cell adhesion in the lower levels of the epidermis. Stefins have been proposed as prognostic and diagnostic tools for cancer.