

**Anti-Cystatin B Antibody**  
**Catalog # ABO11412****Specification**

---

**Anti-Cystatin B Antibody - Product Information**

Application	WB, IHC
Primary Accession	<a href="#">P04080</a>
Host	Rabbit
Reactivity	Human
Clonality	Polyclonal
Format	Lyophilized

**Description**

Rabbit IgG polyclonal antibody for Cystatin-B(CSTB) detection. Tested with WB, IHC-P in Human.

**Reconstitution**

Add 0.2ml of distilled water will yield a concentration of 500ug/ml.

**Anti-Cystatin B Antibody - Additional Information**

**Gene ID** 1476

**Other Names**

Cystatin-B, CPI-B, Liver thiol proteinase inhibitor, Stefin-B, CSTB, CST6, STFB

**Calculated MW**

11140 MW KDa

**Application Details**

Immunohistochemistry(Paraffin-embedded Section), 0.5-1 µg/ml, Human, By Heat<br>Western blot, 0.1-0.5 µg/ml, Human<br>

**Subcellular Localization**

Cytoplasm . Nucleus .

**Protein Name**

Cystatin-B

**Contents**

Each vial contains 5mg BSA, 0.9mg NaCl, 0.2mg Na<sub>2</sub>HPO<sub>4</sub>, 0.05mg Thimerosal, 0.05mg NaN<sub>3</sub>.

**Immunogen**

A synthetic peptide corresponding to a sequence in the middle region of human Stefin B(26-45aa QLEEKENKKFPVFKAVSFKS).

**Purification**

Immunogen affinity purified.

**Cross Reactivity**

No cross reactivity with other proteins

**Storage**

At -20°C for one year. After reconstitution, at 4°C for one month. It can also be aliquotted and stored frozen at -20°C for a longer time. Avoid repeated freezing and thawing.

**Sequence Similarities**

Belongs to the cystatin family.

**Anti-Cystatin B Antibody - Protein Information**

**Name** CSTB

**Synonyms** CST6, STFB

**Function**

This is an intracellular thiol proteinase inhibitor. Tightly binding reversible inhibitor of cathepsins L, H and B.

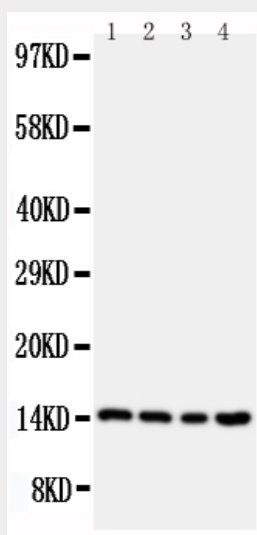
**Cellular Location**

Cytoplasm. Nucleus

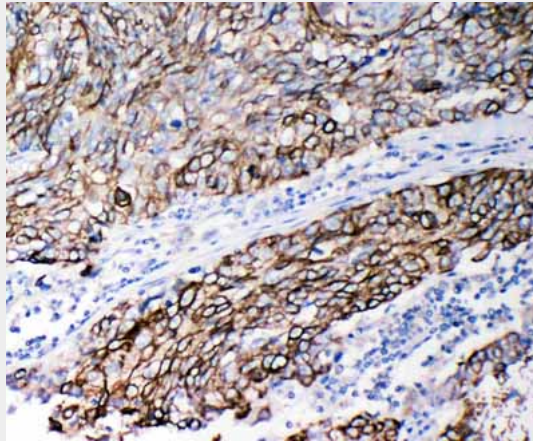
**Anti-Cystatin B Antibody - Protocols**

Provided below are standard protocols that you may find useful for product applications.

- [Western Blot](#)
- [Blocking Peptides](#)
- [Dot Blot](#)
- [Immunohistochemistry](#)
- [Immunofluorescence](#)
- [Immunoprecipitation](#)
- [Flow Cytometry](#)
- [Cell Culture](#)

**Anti-Cystatin B Antibody - Images**

Anti-Stefin B antibody, ABO11412, Western blotting  
Lane 1: A549 Cell Lysate  
Lane 2: A431 Cell Lysate  
Lane 3: COLO320 Cell Lysate  
Lane 4: HELA Cell Lysate



Anti-Stefin B antibody, ABO11412, IHC(P)IHC(P): Human Lung Cancer Tissue

### **Anti-Cystatin B Antibody - Background**

Cystatin B (CSTB), also called STFB, is a small protein that is a member of the superfamily of cysteine protease inhibitors. It has been isolated from human spleen and liver and its amino acid sequence has been fully determined. The cystatin B gene is located on 21q22.3. It is widely distributed and is localized mostly intracellularly, but has been found extracellularly. The protein is able to form a dimer stabilized by noncovalent forces, inhibiting papain and cathepsins I, h and b. Its role is thought to be as a protector against the proteinases leaking from lysosomes. A cystatin B multiprotein complex might have a specific cerebellar function, and that the loss of this function might contribute to the etiopathogenesis of EPM1. Upon differentiation to myotubes, CSTB becomes excluded from the nucleus and lysosomes, suggesting that the subcellular distribution of CSTB is dependent on the differentiation status of the cell.