

Anti-SIDT1 Antibody
Catalog # ABO11420**Specification**

Anti-SIDT1 Antibody - Product Information

Application	WB
Primary Accession	Q9NXL6
Host	Rabbit
Reactivity	Human
Clonality	Polyclonal
Format	Lyophilized

Description

Rabbit IgG polyclonal antibody for SID1 transmembrane family member 1(SIDT1) detection. Tested with WB in Human.

Reconstitution

Add 0.2ml of distilled water will yield a concentration of 500ug/ml.

Anti-SIDT1 Antibody - Additional Information

Gene ID 54847

Other Names

SID1 transmembrane family member 1, SIDT1

Calculated MW

93839 MW KDa

Application Details

Western blot, 0.1-0.5 µg/ml, Human

Subcellular Localization

Membrane ; Multi-pass membrane protein .

Protein Name

SID1 transmembrane family member 1

Contents

Each vial contains 5mg BSA, 0.9mg NaCl, 0.2mg Na₂HPO₄, 0.05mg Thimerosal, 0.05mg NaN₃.

Immunogen

A synthetic peptide corresponding to a sequence at the N-terminus of human SIDT1(36-52aa RRDPFDAARGADFDHVV), different from the related rat sequence by five amino acids, and different from the related mouse sequence by three amino acids.

Purification

Immunogen affinity purified.

Cross Reactivity

No cross reactivity with other proteins

Storage

At -20°C for one year. After reconstitution, at 4°C for one month. It can also be aliquotted and stored frozen at -20°C for a longer time. Avoid repeated freezing and thawing.

Anti-SIDT1 Antibody - Protein Information

Name SIDT1

Function

In vitro binds long double-stranded RNA (dsRNA) (500 and 700 base pairs), but not dsRNA shorter than 300 bp. Not involved in RNA autophagy, a process in which RNA is directly imported into lysosomes in an ATP-dependent manner, and degraded.

Cellular Location

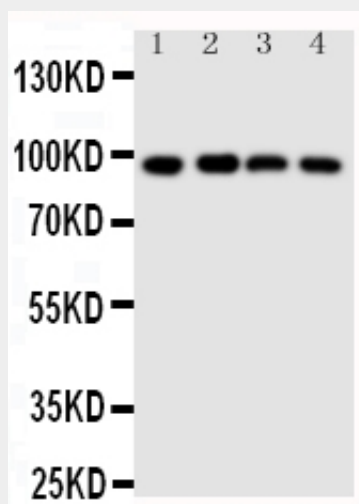
Membrane; Multi-pass membrane protein

Anti-SIDT1 Antibody - Protocols

Provided below are standard protocols that you may find useful for product applications.

- [Western Blot](#)
- [Blocking Peptides](#)
- [Dot Blot](#)
- [Immunohistochemistry](#)
- [Immunofluorescence](#)
- [Immunoprecipitation](#)
- [Flow Cytometry](#)
- [Cell Culture](#)

Anti-SIDT1 Antibody - Images



Anti-SIDT1 antibody, ABO11420, Western blotting
Lane 1: HELA Cell Lysate
Lane 2: COLO320 Cell Lysate
Lane 3: SW620 Cell Lysate
Lane 4: HT1080 Cell Lysate

Anti-SIDT1 Antibody - Background

SID1 transmembrane family member 1, also called SID1, C. ELEGANS, is a protein which in humans is encoded by the SIDT1 gene. The protein encoded by this gene links to HGNC-curated gene family pages. The gene was assigned to human chromosome 3q13.31. This protein likely plays an important role in RNA transmembrane transporter activity.