

**Anti-CCR9 Antibody**  
**Catalog # ABO11428****Specification**

---

**Anti-CCR9 Antibody - Product Information**

Application	WB
Primary Accession	<a href="#">P51686</a>
Host	Rabbit
Reactivity	Human
Clonality	Polyclonal
Format	Lyophilized

**Description**

Rabbit IgG polyclonal antibody for C-C chemokine receptor type 9(CCR9) detection. Tested with WB in Human.

**Reconstitution**

Add 0.2ml of distilled water will yield a concentration of 500ug/ml.

**Anti-CCR9 Antibody - Additional Information**

**Gene ID** 10803

**Other Names**

C-C chemokine receptor type 9, C-C CKR-9, CC-CKR-9, CCR-9, G-protein coupled receptor 28, GPR-9-6, CDw199, CCR9, GPR28

**Calculated MW**

42016 MW KDa

**Application Details**

Western blot, 0.1-0.5 µg/ml, Human<br>

**Subcellular Localization**

Cell membrane; Multi-pass membrane protein.

**Tissue Specificity**

Highly expressed in the thymus and low in lymph nodes and spleen. .

**Protein Name**

C-C chemokine receptor type 9

**Contents**

Each vial contains 5mg BSA, 0.9mg NaCl, 0.2mg Na<sub>2</sub>HPO<sub>4</sub>, 0.05mg Thimerosal, 0.05mg NaN<sub>3</sub>.

**Immunogen**

A synthetic peptide corresponding to a sequence at the N-terminus of human CCR9(1-17aa MTPDFTSPIPNMADDY).

**Purification**

Immunogen affinity purified.

**Cross Reactivity**

No cross reactivity with other proteins

**Storage**

**At -20°C for one year. After reconstitution, at 4°C for one month. It can also be aliquotted and stored frozen at -20°C for a longer time. Avoid repeated freezing and thawing.**

**Sequence Similarities**

Belongs to the G-protein coupled receptor 1 family.

**Anti-CCR9 Antibody - Protein Information**

**Name** CCR9

**Synonyms** GPR28

**Function**

Receptor for chemokine SCYA25/TECK. Subsequently transduces a signal by increasing the intracellular calcium ions level.

**Cellular Location**

Cell membrane; Multi-pass membrane protein

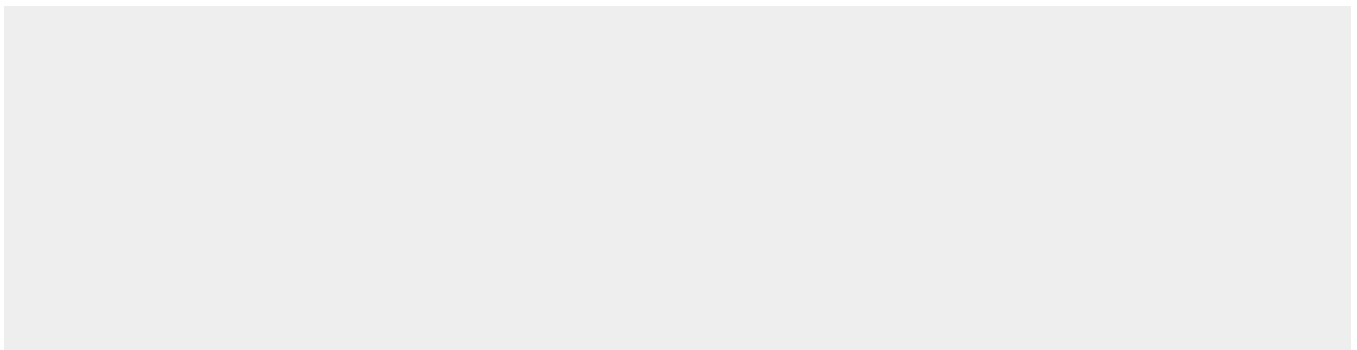
**Tissue Location**

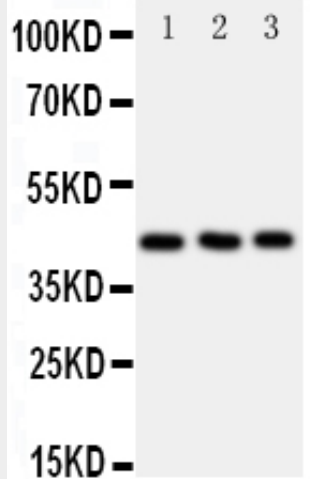
Highly expressed in the thymus and low in lymph nodes and spleen.

**Anti-CCR9 Antibody - Protocols**

Provided below are standard protocols that you may find useful for product applications.

- [Western Blot](#)
- [Blocking Peptides](#)
- [Dot Blot](#)
- [Immunohistochemistry](#)
- [Immunofluorescence](#)
- [Immunoprecipitation](#)
- [Flow Cytometry](#)
- [Cell Culture](#)

**Anti-CCR9 Antibody - Images**



Anti-CCR9 antibody, ABO11428, Western blotting All lanes: Anti CCR9 (ABO11428) at 0.5ug/ml  
Lane 1: JURKAT Whole Cell Lysate at 40ug  
Lane 2: HELA Whole Cell Lysate at 40ug  
Lane 3: SMMC Whole Cell Lysate at 40ug  
Predicted bind size: 42KD  
Observed bind size: 42KD

### **Anti-CCR9 Antibody - Background**

C-C chemokine receptor type 9, also called GPR-9-6 or CDw199, is a protein that in humans is encoded by the CCR9 gene. The protein encoded by this gene is a member of the beta chemokine receptor family. By radiation hybrid analysis and organization of BAC contigs by FISH on combed genomic DNA, the CCR9 gene within the CCR cluster was localized at 3p21.3. It is the receptor for chemokine SCYA25/TECK. This gene subsequently transduces a signal by increasing the intracellular calcium ions level. It is an alternative coreceptor with CD4 for HIV-1 infection. This gene may play a role in the thymocytes recruitment and development that may permit functional specialization of immune responses in different segment of the gastrointestinal tract.