

Anti-P2X6 Antibody
Catalog # ABO11436**Specification**

Anti-P2X6 Antibody - Product Information

Application	WB
Primary Accession	O15547
Host	Rabbit
Reactivity	Human
Clonality	Polyclonal
Format	Lyophilized

Description

Rabbit IgG polyclonal antibody for P2X purinoceptor 6(P2RX6) detection. Tested with WB in Human.

Reconstitution

Add 0.2ml of distilled water will yield a concentration of 500ug/ml.

Anti-P2X6 Antibody - Additional Information

Gene ID 9127

Other Names

P2X purinoceptor 6, P2X6, ATP receptor, P2XM, Purinergic receptor, Purinergic receptor P2X-like 1, P2RX6, P2RXL1, P2X6

Calculated MW

48829 MW KDa

Application Details

Western blot, 0.1-0.5 µg/ml, Human

Subcellular Localization

Membrane; Multi-pass membrane protein.

Tissue Specificity

Expressed predominantly in skeletal muscle.

Protein Name

P2X purinoceptor 6

Contents

Each vial contains 5mg BSA, 0.9mg NaCl, 0.2mg Na₂HPO₄, 0.05mg Thimerosal, 0.05mg NaN₃.

Immunogen

A synthetic peptide corresponding to a sequence at the C-terminus of human P2X6(387-406aa VWRELALASQARLAELRRS).

Purification

Immunogen affinity purified.

Cross Reactivity

No cross reactivity with other proteins

Storage

At -20°C for one year. After reconstitution, at 4°C for one month. It can also be aliquotted and stored frozen at -20°C for a longer time. Avoid repeated freezing and thawing.

Sequence Similarities

Belongs to the P2X receptor family.

Anti-P2X6 Antibody - Protein Information

Name P2RX6

Synonyms P2RXL1, P2X6

Function

May act as a modulatory subunit rather than a functional channel. Unlike other P2XRs members, P2RX6 does not seem to form functional homotrimers (PubMed:22378790). P2RX6 requires the presence of P2RX4 or P2RX2 to shuttle it to the plasma membrane where it may form functional heterotrimeric receptors at the plasma membrane (PubMed:22378790). P2RX6 can be translocated to the nucleus and functions as a nuclear regulator of post-transcriptional modifications in neurons (By similarity).

Cellular Location

Cell membrane {ECO:0000250|UniProtKB:P51579}; Multi-pass membrane protein. Endoplasmic reticulum {ECO:0000250|UniProtKB:P51579}. Nucleus {ECO:0000250|UniProtKB:O54803} Nucleus inner membrane {ECO:0000250|UniProtKB:O54803}; Multi-pass membrane protein. Note=Heteromerization of P2RX6 subunits with either P2RX2 or P2RX4 subunits guides the P2RX6 subunit to the plasma membrane (By similarity). Monomers remain anchored to the endoplasmic reticulum (ER) membrane by the hydrophobic N-terminal end (By similarity). Mainly expressed in the cell body of the hippocampal neurons (By similarity). {ECO:0000250|UniProtKB:O54803, ECO:0000250|UniProtKB:P51579}

Tissue Location

Expressed predominantly in skeletal muscle.

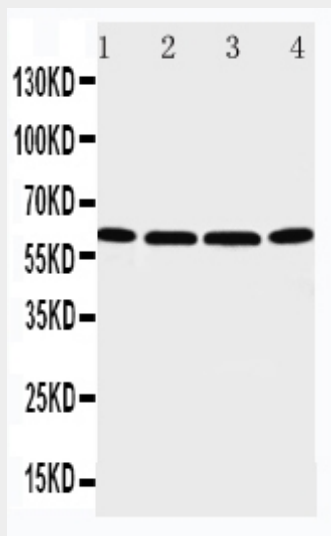
Anti-P2X6 Antibody - Protocols

Provided below are standard protocols that you may find useful for product applications.

- [Western Blot](#)
- [Blocking Peptides](#)
- [Dot Blot](#)
- [Immunohistochemistry](#)
- [Immunofluorescence](#)
- [Immunoprecipitation](#)
- [Flow Cytometry](#)

- [Cell Culture](#)

Anti-P2X6 Antibody - Images



Anti-P2X6 antibody, ABO11436, Western blotting
Lane 1: U87 Cell Lysate
Lane 2: 22RV1 Cell Lysate
Lane 3: JURKAT Cell Lysate
Lane 4: HT1080 Cell Lysate

Anti-P2X6 Antibody - Background

Purinergic receptor P2X-Like 1, also known as P2X6, is a protein that in humans is encoded by the P2RX6 gene. The encoded protein is associated with VE-cadherin at the adherens junctions of human umbilical vein endothelial cells. This gene belongs to the family of P2X receptors. P2RXL1 gene was mapped to chromosome 22q11 by fluorescence in situ hybridization. This gene is a receptor for ATP that acts as a ligand-gated ion channel. It can mediate rapid and selective permeability to cations.