

Anti-Syndecan 3/SDC3 Antibody
Catalog # ABO11441**Specification**

Anti-Syndecan 3/SDC3 Antibody - Product Information

Application	IHC, WB
Primary Accession	Q64519
Host	Rabbit
Reactivity	Human, Mouse, Rat
Clonality	Polyclonal
Format	Lyophilized

Description

Rabbit IgG polyclonal antibody for Syndecan-3(SDC3) detection. Tested with WB, IHC-P in Human;Mouse;Rat.

Reconstitution

Add 0.2ml of distilled water will yield a concentration of 500ug/ml.

Anti-Syndecan 3/SDC3 Antibody - Additional Information

Gene ID 20970

Other Names

Syndecan-3, SYND3, Sdc3, Kiaa0468

Calculated MW

46002 MW KDa

Application Details

Immunohistochemistry(Paraffin-embedded Section), 0.5-1 µg/ml, Human, Rat, Mouse, By Heat

Western blot, 0.1-0.5 µg/ml, Human, Rat, Mouse

Subcellular Localization

Membrane; Single-pass type I membrane protein.

Protein Name

Syndecan-3

Contents

Each vial contains 5mg BSA, 0.9mg NaCl, 0.2mg Na₂HPO₄, 0.05mg Thimerosal, 0.05mg NaN₃.

Immunogen

A synthetic peptide corresponding to a sequence at the N-terminus of mouse Syndecan 3/SDC3 (45-60aa AQRWRNENFERPVDLE), identical to the related rat sequence, and different from the related human sequence by one amino acid.

Purification

Immunogen affinity purified.

Cross Reactivity

No cross reactivity with other proteins

Storage

At -20°C for one year. After reconstitution, at 4°C for one month. It can also be aliquotted and stored frozen at -20°C for a longer time. Avoid repeated freezing and thawing.

Anti-Syndecan 3/SDC3 Antibody - Protein Information

Name Sdc3

Synonyms Kiaa0468

Function

Cell surface proteoglycan that may bear heparan sulfate. May have a role in the organization of cell shape by affecting the actin cytoskeleton, possibly by transferring signals from the cell surface in a sugar-dependent mechanism (By similarity).

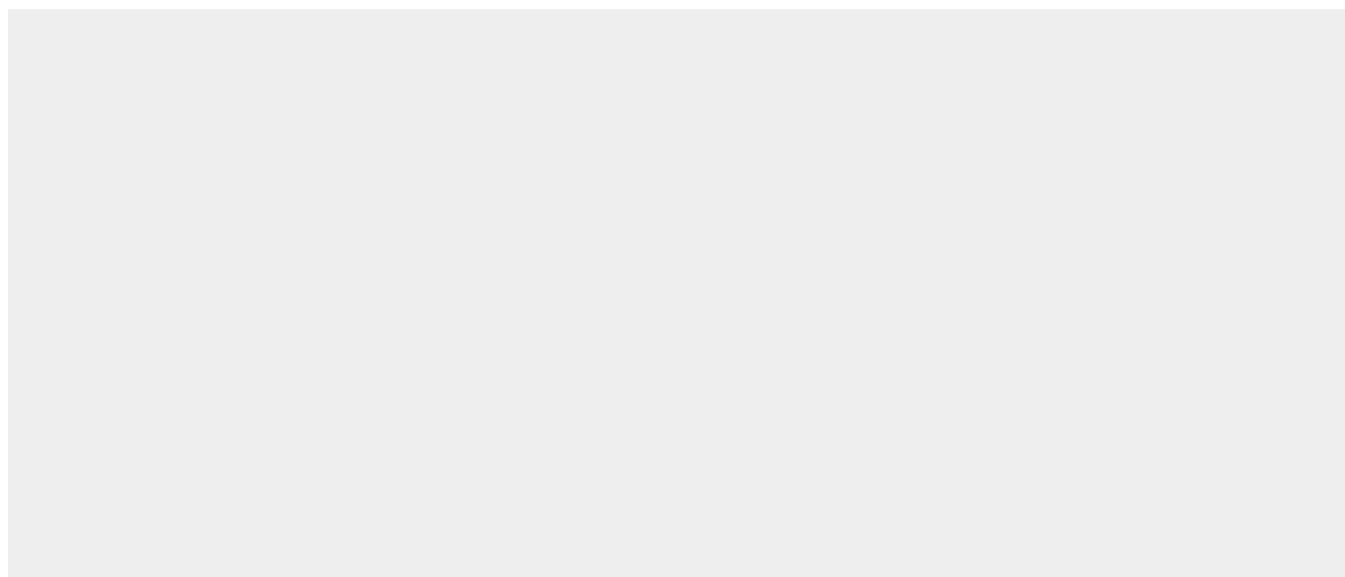
Cellular Location

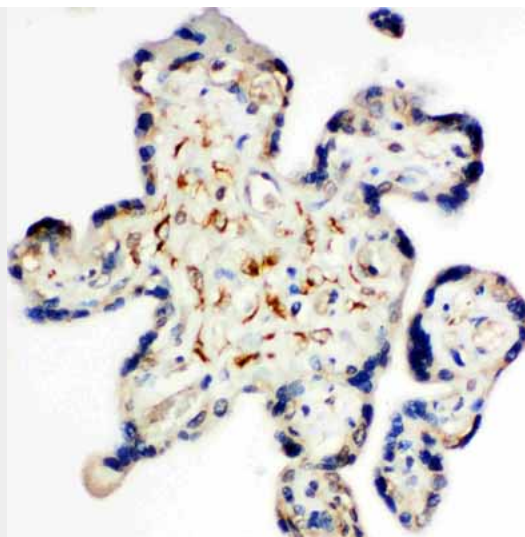
Cell membrane; Single-pass type I membrane protein

Anti-Syndecan 3/SDC3 Antibody - Protocols

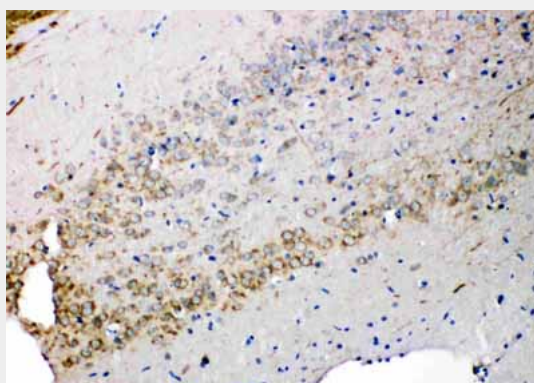
Provided below are standard protocols that you may find useful for product applications.

- [Western Blot](#)
- [Blocking Peptides](#)
- [Dot Blot](#)
- [Immunohistochemistry](#)
- [Immunofluorescence](#)
- [Immunoprecipitation](#)
- [Flow Cytometry](#)
- [Cell Culture](#)

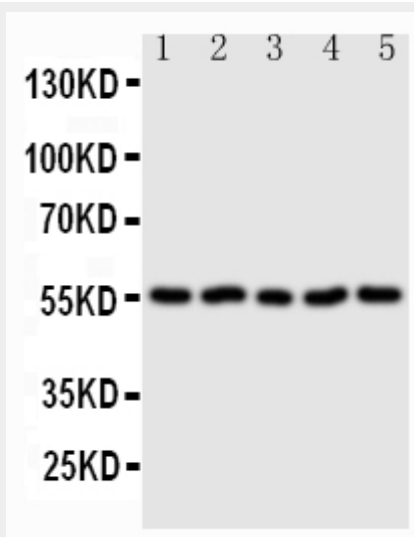
Anti-Syndecan 3/SDC3 Antibody - Images



Anti-Syndecan 3/SDC3 antibody, ABO11441, IHC(P)IHC(P): Human Placenta Tissue



Anti-Syndecan 3/SDC3 antibody, ABO11441, IHC(P)IHC(P): Rat Brain Tissue



Anti-Syndecan 3/SDC3 antibody, ABO11441, Western blotting
Lane 1: U87 Cell Lysate
Lane 2: 293T Cell Lysate
Lane 3: PC-12 Cell Lysate
Lane 4: NRK Cell Lysate
Lane 5: HT1080 Cell Lysate

Anti-Syndecan 3/SDC3 Antibody - Background

Syndecan-3, also called SYND3 is a protein that in humans is encoded by the SDC3 gene. This gene was assigned to human chromosome 1p35.2. This gene can function as in trans HIV receptors via

binding of HIV-1 gp120 to the syndecan heparin sulfate chains. It may play a role in the organization of cell shape by affecting the actin cytoskeleton, and possibly by transferring signals from the cell surface in a sugar-dependent mechanism. In wildtype mice, SDC3 was expressed in hypothalamic regions that control energy balance. It was proposed that oscillation of hypothalamic SDC3 levels physiologically modulates feeding behavior.