

**Anti-E2F3 Antibody**  
**Catalog # ABO11453****Specification**

---

**Anti-E2F3 Antibody - Product Information**

Application	WB
Primary Accession	<a href="#">O00716</a>
Host	Rabbit
Reactivity	Human, Mouse
Clonality	Polyclonal
Format	Lyophilized

**Description**

Rabbit IgG polyclonal antibody for Transcription factor E2F3(E2F3) detection. Tested with WB in Human;Mouse.

**Reconstitution**

Add 0.2ml of distilled water will yield a concentration of 500ug/ml.

**Anti-E2F3 Antibody - Additional Information**

**Gene ID** 1871

**Other Names**

Transcription factor E2F3, E2F-3, E2F3, KIAA0075

**Calculated MW**

49162 MW KDa

**Application Details**

Western blot, 0.1-0.5 µg/ml, Human, Mouse<br>

**Subcellular Localization**

Nucleus.

**Protein Name**

Transcription factor E2F3

**Contents**

Each vial contains 5mg BSA, 0.9mg NaCl, 0.2mg Na<sub>2</sub>HPO<sub>4</sub>, 0.05mg Thimerosal, 0.05mg NaN<sub>3</sub>.

**Immunogen**

A synthetic peptide corresponding to a sequence at the C-terminus of human E2F3(446-465aa DLFDAYDLEKLPLVEDFMCS), identical to the related mouse sequence.

**Purification**

Immunogen affinity purified.

**Cross Reactivity**

No cross reactivity with other proteins

**Storage**

**At -20°C for one year. After reconstitution, at 4°C for one month. It can also be aliquotted and stored frozen at -20°C for a longer time. Avoid repeated freezing and thawing.**

**Sequence Similarities**

Belongs to the E2F/DP family.

**Anti-E2F3 Antibody - Protein Information**

**Name** E2F3

**Synonyms** KIAA0075

**Function**

Transcription activator that binds DNA cooperatively with DP proteins through the E2 recognition site, 5'-TTTC[CG]CGC-3' found in the promoter region of a number of genes whose products are involved in cell cycle regulation or in DNA replication. The DRTF1/E2F complex functions in the control of cell-cycle progression from G1 to S phase. E2F3 binds specifically to RB1 in a cell-cycle dependent manner. Inhibits adipogenesis, probably through the repression of CEBPA binding to its target gene promoters (By similarity).

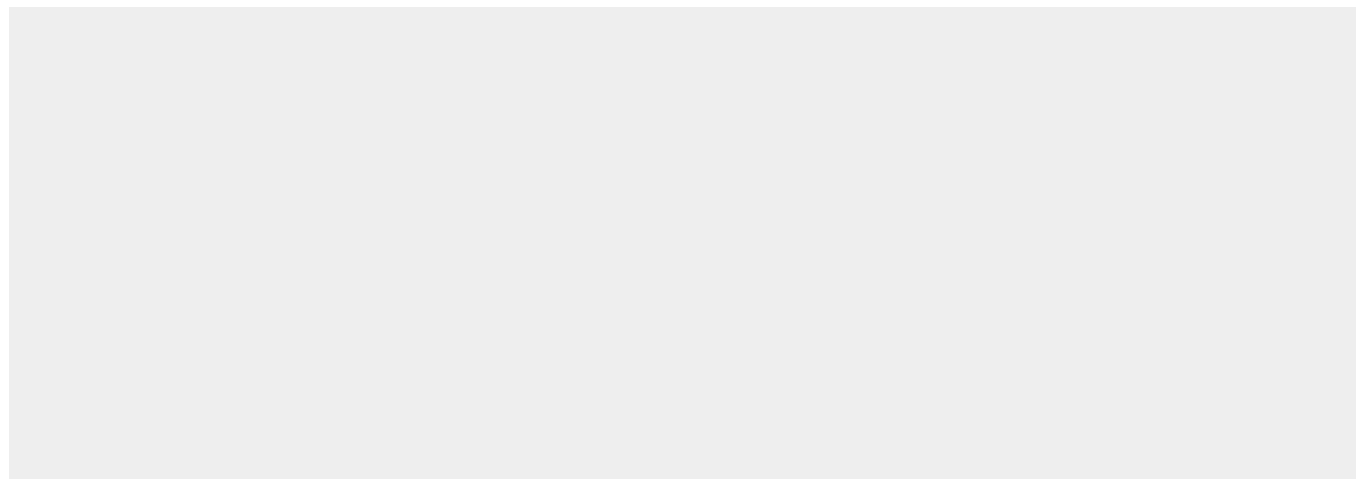
**Cellular Location**

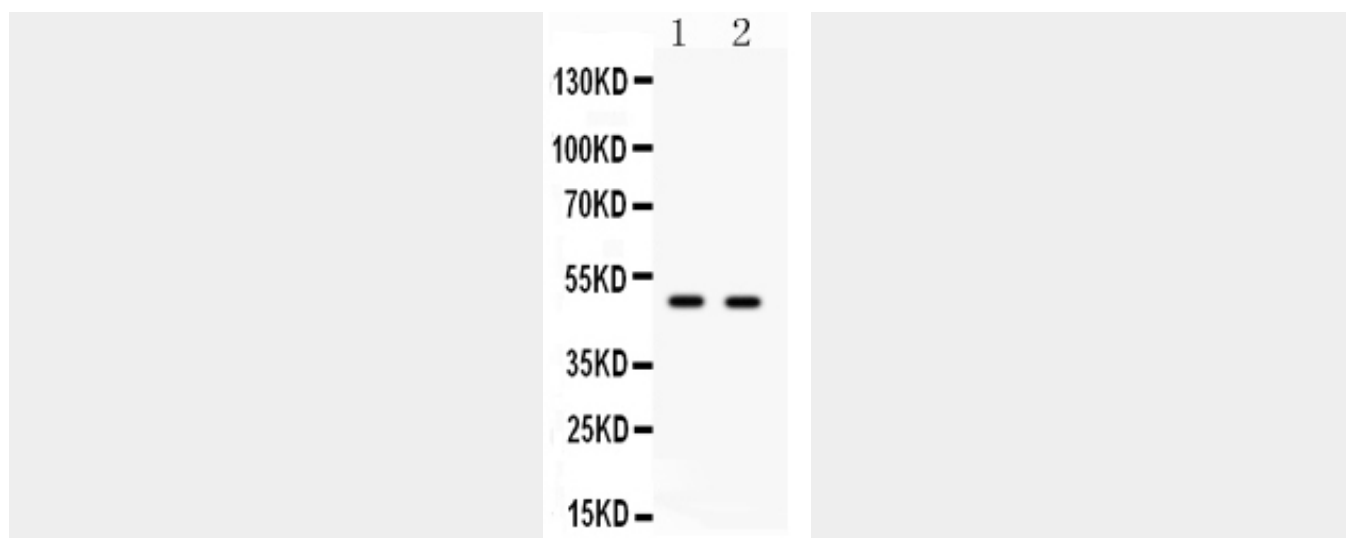
Nucleus.

**Anti-E2F3 Antibody - Protocols**

Provided below are standard protocols that you may find useful for product applications.

- [Western Blot](#)
- [Blocking Peptides](#)
- [Dot Blot](#)
- [Immunohistochemistry](#)
- [Immunofluorescence](#)
- [Immunoprecipitation](#)
- [Flow Cytometry](#)
- [Cell Culture](#)

**Anti-E2F3 Antibody - Images**



Anti- E2F3 antibody, ABO11453, Western blotting All lanes: Anti E2F3 (ABO11453) at 0.5ug/ml  
Lane 1: HELA Whole Cell Lysate at 40ug  
Lane 2: COLO320 Whole Cell Lysate at 40ug  
Predicted bind size: 49KD  
Observed bind size: 49KD

#### Anti-E2F3 Antibody - Background

Transcription factor E2F3, also known as KIAA0075, is a protein that in humans is encoded by the E2F3 gene. The protein encoded by this gene is a member of the E2F family of transcription factors. By fluorescence in situ hybridization, E2F3 gene is mapped to 6q22.3. The induction of specific E2F activities is an essential component in the MYC pathways that control cell proliferation and cell fate decisions. This gene encodes a member of a small family of transcription factors that function through binding of DP interaction partner proteins. The encoded protein recognizes a specific sequence motif in DNA and interacts directly with the retinoblastoma protein(pRB) to regulate the expression of genes involved in the cell cycle.