

**Anti-MMP-14 Antibody**  
**Catalog # ABO11457****Specification**

---

**Anti-MMP-14 Antibody - Product Information**

Application	WB, IHC-P
Primary Accession	<a href="#">P50281</a>
Host	Rabbit
Reactivity	Human, Mouse, Rat
Clonality	Polyclonal
Format	Lyophilized

**Description**

Rabbit IgG polyclonal antibody for Matrix metalloproteinase-14(MMP14) detection. Tested with WB, IHC-P in Human;Mouse;Rat.

**Reconstitution**

Add 0.2ml of distilled water will yield a concentration of 500ug/ml.

**Anti-MMP-14 Antibody - Additional Information**

**Gene ID** 4323

**Other Names**

Matrix metalloproteinase-14, MMP-14, 3.4.24.80, MMP-X1, Membrane-type matrix metalloproteinase 1, MT-MMP 1, MTMMP1, Membrane-type-1 matrix metalloproteinase, MT1-MMP, MT1MMP, MMP14

**Calculated MW**

65894 MW KDa

**Application Details**

Immunohistochemistry(Paraffin-embedded Section), 0.5-1 µg/ml, Human, Rat, Mouse, By Heat<br>Western blot, 0.1-0.5 µg/ml, Human, Rat, Mouse<br>

**Subcellular Localization**

Membrane ; Single-pass type I membrane protein . Melanosome. Cytoplasm. Identified by mass spectrometry in melanosome fractions from stage I to stage IV. Forms a complex with BST2 and localizes to the cytoplasm.

**Tissue Specificity**

Expressed in stromal cells of colon, breast, and head and neck. Expressed in lung tumors. .

**Protein Name**

Matrix metalloproteinase-14

**Contents**

Each vial contains 5mg BSA, 0.9mg NaCl, 0.2mg Na<sub>2</sub>HPO<sub>4</sub>, 0.05mg Thimerosal, 0.05mg NaN<sub>3</sub>.

**Immunogen**

A synthetic peptide corresponding to a sequence at the C-terminus of human MMP14(567-582aa TPRRLLYCQRSLLDKV), different from the related mouse and rat sequences by one amino acid.

**Purification**

Immunogen affinity purified.

**Cross Reactivity**

No cross reactivity with other proteins

**Storage**

**At -20°C for one year. After reconstitution, at 4°C for one month. It can also be aliquotted and stored frozen at -20°C for a longer time. Avoid repeated freezing and thawing.**

**Sequence Similarities**

Belongs to the peptidase M10A family.

**Anti-MMP-14 Antibody - Protein Information****Name** MMP14**Function**

Endopeptidase that degrades various components of the extracellular matrix such as collagen (PubMed: <a href="http://www.uniprot.org/citations/8015608" target="\_blank">8015608</a>). Essential for pericellular collagenolysis and modeling of skeletal and extraskeletal connective tissues during development (By similarity). Activates progelatinase A/MMP2, thereby acting as a positive regulator of cell growth and migration (PubMed: <a href="http://www.uniprot.org/citations/22065321" target="\_blank">22065321</a>, PubMed: <a href="http://www.uniprot.org/citations/8015608" target="\_blank">8015608</a>). Involved in the formation of the fibrovascular tissues in association with pro-MMP2 (PubMed: <a href="http://www.uniprot.org/citations/12714657" target="\_blank">12714657</a>, PubMed: <a href="http://www.uniprot.org/citations/22065321" target="\_blank">22065321</a>). May be involved in actin cytoskeleton reorganization by cleaving PTK7 (PubMed: <a href="http://www.uniprot.org/citations/20837484" target="\_blank">20837484</a>). Acts as a regulator of Notch signaling by mediating cleavage and inhibition of DLL1 (PubMed: <a href="http://www.uniprot.org/citations/21572390" target="\_blank">21572390</a>). Cleaves ADGRB1 to release vasculostatin-40 which inhibits angiogenesis (PubMed: <a href="http://www.uniprot.org/citations/22330140" target="\_blank">22330140</a>). Acts as a negative regulator of the GDF15-GFRAL aversive response by mediating cleavage and inactivation of GFRAL (PubMed: <a href="http://www.uniprot.org/citations/35177851" target="\_blank">35177851</a>).

**Cellular Location**

Cell membrane; Single-pass type I membrane protein. Melanosome. Cytoplasm Note=Identified by mass spectrometry in melanosome fractions from stage I to stage IV (PubMed:17081065). Forms a complex with BST2 and localizes to the cytoplasm (PubMed:17081065)

**Tissue Location**

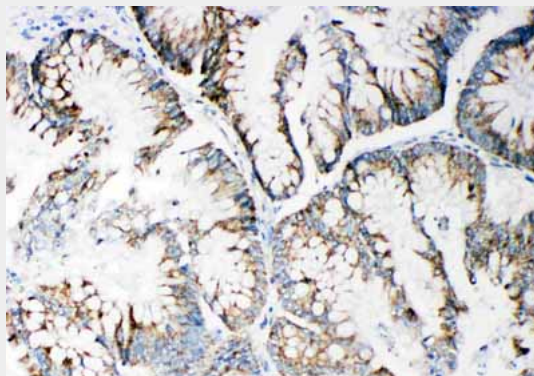
Expressed in stromal cells of colon, breast, and head and neck. Expressed in lung tumors.

**Anti-MMP-14 Antibody - Protocols**

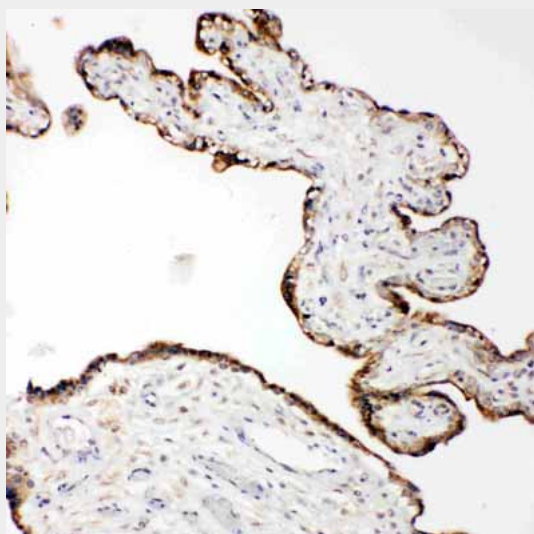
Provided below are standard protocols that you may find useful for product applications.

- [Western Blot](#)
- [Blocking Peptides](#)
- [Dot Blot](#)
- [Immunohistochemistry](#)
- [Immunofluorescence](#)
- [Immunoprecipitation](#)
- [Flow Cytometry](#)
- [Cell Culture](#)

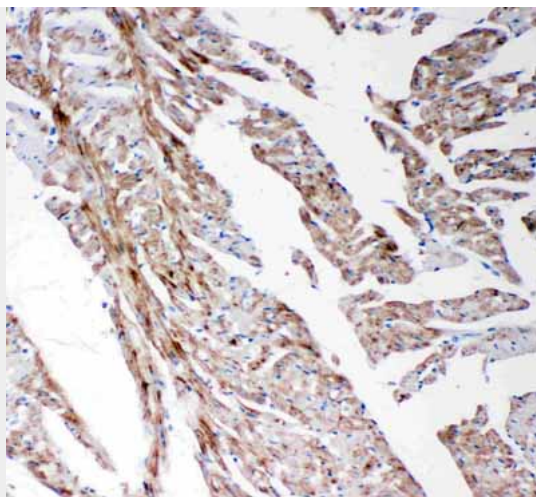
#### **Anti-MMP-14 Antibody - Images**



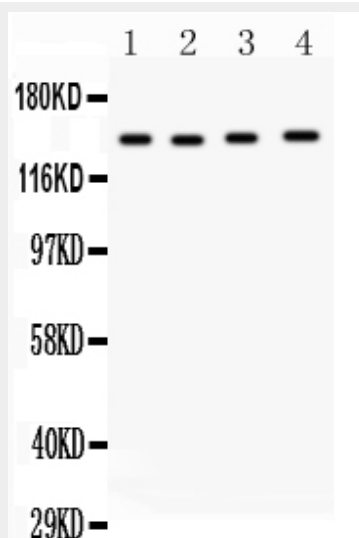
Anti-MMP14 antibody, ABO11457, IHC(P)IHC(P): Human Intestinal Cancer Tissue



Anti-MMP14 antibody, ABO11457, IHC(P)IHC(P): Human Placenta Tissue



Anti-MMP14 antibody, ABO11457, IHC(P)IHC(P): Rat Cardiac Muscle Tissue



Anti-MMP14 antibody, ABO11457, Western blottingAll lanes: Anti MMP14 (ABO11457) at 0.5ug/mlLane 1: Rat Spleen Tissue Lysate at 50ugLane 2: Human Placenta Tissue Lysate at 50ugLane 3: HELA Whole Cell Lysate at 40ugLane 4: A549 Whole Cell Lysate at 40ugPredicted bind size: 66KDObserved bind size: 150KD

### Anti-MMP-14 Antibody - Background

Matrix metalloproteinase-14, also called MT-MMP 1, is an enzyme that in humans is encoded by the MMP14 gene. The protein encoded by this gene is a member of the membrane-type MMP subfamily. This gene is mapped to 14q11.2. Proteins of the matrix metalloproteinase(MMP) family are involved in the breakdown of extracellular matrix in normal physiological processes, such as embryonic development, reproduction, and tissue remodeling, as well as in disease processes, such as arthritis and metastasis. This gene may be involved in actin cytoskeleton reorganization by cleaving PTK7. It acts as a positive regulator of cell growth and migration via activation of MMP15.