

Anti-NDRG2 Antibody
Catalog # ABO11458**Specification**

Anti-NDRG2 Antibody - Product Information

Application	WB
Primary Accession	Q9UN36
Host	Rabbit
Reactivity	Human
Clonality	Polyclonal
Format	Lyophilized

Description

Rabbit IgG polyclonal antibody for Protein NDRG2(NDRG2) detection. Tested with WB in Human.

Reconstitution

Add 0.2ml of distilled water will yield a concentration of 500ug/ml.

Anti-NDRG2 Antibody - Additional Information

Gene ID 57447

Other Names

Protein NDRG2, N-myc downstream-regulated gene 2 protein, Protein Syld709613, NDRG2, KIAA1248, SYLD

Calculated MW

40798 MW KDa

Application Details

Western blot, 0.1-0.5 µg/ml, Human

Subcellular Localization

Cytoplasm. Cytoplasm, perinuclear region. Cell projection, growth cone . In neurons, seems to concentrate at axonal growth cone. Perinuclear in neurons (By similarity). .

Tissue Specificity

Highly expressed in brain, heart, skeletal muscle and salivary gland, and moderately in kidney and liver. Expressed in dendritic cells, but not in other blood cells. Expression levels are low in pancreatic and liver cancer tissues; absent in meningioma. Expressed in low-grade gliomas but present at low levels in glioblastoma. Isoform 1 and isoform 2 are present in brain neurons and up-regulated in Alzheimer disease (at protein level). .

Protein Name

Protein NDRG2

Contents

Each vial contains 5mg BSA, 0.9mg NaCl, 0.2mg Na₂HPO₄, 0.05mg Thimerosal, 0.05mg NaN₃.

Immunogen

A synthetic peptide corresponding to a sequence at the C-terminus of human NDRG2(212-230aa ELIQKYRNIITHAPNLDNI).

Purification

Immunogen affinity purified.

Cross Reactivity

No cross reactivity with other proteins

Storage

At -20°C for one year. After reconstitution, at 4°C for one month. It can also be aliquotted and stored frozen at -20°C for a longer time. Avoid repeated freezing and thawing.

Sequence Similarities

Belongs to the NDRG family.

Anti-NDRG2 Antibody - Protein Information

Name NDRG2

Synonyms KIAA1248, SYLD

Function

Contributes to the regulation of the Wnt signaling pathway. Down-regulates CTNNB1-mediated transcriptional activation of target genes, such as CCND1, and may thereby act as tumor suppressor. May be involved in dendritic cell and neuron differentiation.

Cellular Location

Cytoplasm. Cytoplasm, perinuclear region. Cell projection, growth cone. Note=In neurons, seems to concentrate at axonal growth cone. Perinuclear in neurons (By similarity).

Tissue Location

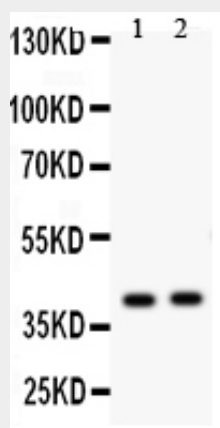
Highly expressed in brain, heart, skeletal muscle and salivary gland, and moderately in kidney and liver. Expressed in dendritic cells, but not in other blood cells. Expression levels are low in pancreatic and liver cancer tissues; absent in meningioma Expressed in low-grade gliomas but present at low levels in glioblastoma. Isoform 1 and isoform 2 are present in brain neurons and up-regulated in Alzheimer disease (at protein level)

Anti-NDRG2 Antibody - Protocols

Provided below are standard protocols that you may find useful for product applications.

- [Western Blot](#)
- [Blocking Peptides](#)
- [Dot Blot](#)
- [Immunohistochemistry](#)
- [Immunofluorescence](#)
- [Immunoprecipitation](#)
- [Flow Cytometry](#)
- [Cell Culture](#)

Anti-NDRG2 Antibody - Images



Anti- NDRG2 antibody, ABO11458, Western blotting
All lanes: Anti NDRG2 (ABO11458) at 0.5ug/ml
Lane 1: SMMC Whole Cell Lysate at 40ug
Lane 2: PANC Whole Cell Lysate at 40ug
Predicted bind size: 41KD
Observed bind size: 41KD

Anti-NDRG2 Antibody - Background

Protein NDRG2, also known as KIAA1248, is a protein that in humans is encoded by the NDRG2 gene. This gene is a member of the N-myc downregulated gene family which belongs to the alpha/beta hydrolase superfamily. This gene is mapped to 14q11.2. The protein encoded by this gene is a cytoplasmic protein that may play a role in neurite outgrowth. This gene may be involved in glioblastoma carcinogenesis. It contributes to the regulation of the WNT signaling pathway. This gene may be involved in dendritic cell and neuron differentiation.