

**Anti-Cyclophilin B Antibody**  
**Catalog # ABO11462****Specification**

---

**Anti-Cyclophilin B Antibody - Product Information**

Application	<b>WB, IHC-P</b>
Primary Accession	<a href="#">P23284</a>
Host	<b>Rabbit</b>
Reactivity	<b>Human, Mouse, Rat</b>
Clonality	<b>Polyclonal</b>
Format	<b>Lyophilized</b>

**Description**

Rabbit IgG polyclonal antibody for Peptidyl-prolyl cis-trans isomerase B(PPIB) detection. Tested with WB, IHC-P in Human;Mouse;Rat.

**Reconstitution**

Add 0.2ml of distilled water will yield a concentration of 500ug/ml.

**Anti-Cyclophilin B Antibody - Additional Information**

**Gene ID** 5479

**Other Names**

Peptidyl-prolyl cis-trans isomerase B, PPIase B, 5.2.1.8, CYP-S1, Cyclophilin B, Rotamase B, S-cyclophilin, SCYLP, PPIB, CYPB

**Calculated MW**

23743 MW KDa

**Application Details**

Immunohistochemistry(Paraffin-embedded Section), 0.5-1 µg/ml, Human, Mouse, Rat, By Heat<br>Western blot, 0.1-0.5 µg/ml, Human, Rat, Mouse<br>

**Subcellular Localization**

Endoplasmic reticulum lumen. Melanosome. Identified by mass spectrometry in melanosome fractions from stage I to stage IV.

**Protein Name**

Peptidyl-prolyl cis-trans isomerase B

**Contents**

Each vial contains 5mg BSA, 0.9mg NaCl, 0.2mg Na<sub>2</sub>HPO<sub>4</sub>, 0.05mg Thimerosal, 0.05mg NaN<sub>3</sub>.

**Immunogen**

A synthetic peptide corresponding to a sequence at the C-terminus of human Cyclophilin B(176-196aa MEVVRKVESTKTDSRDKPLKD), different from the related mouse sequence by one amino acid, and from the related rat sequence by two amino acids.

**Purification**

Immunogen affinity purified.

**Cross Reactivity**

No cross reactivity with other proteins

**Storage**

**At -20°C for one year. After reconstitution, at 4°C for one month. It can also be aliquotted and stored frozen at -20°C for a longer time. Avoid repeated freezing and thawing.**

**Sequence Similarities**

Belongs to the cyclophilin-type PPIase family. PPIase B subfamily.

**Anti-Cyclophilin B Antibody - Protein Information**

**Name** PPIB

**Synonyms** CYPB

**Function**

PPIase that catalyzes the cis-trans isomerization of proline imidic peptide bonds in oligopeptides and may therefore assist protein folding.

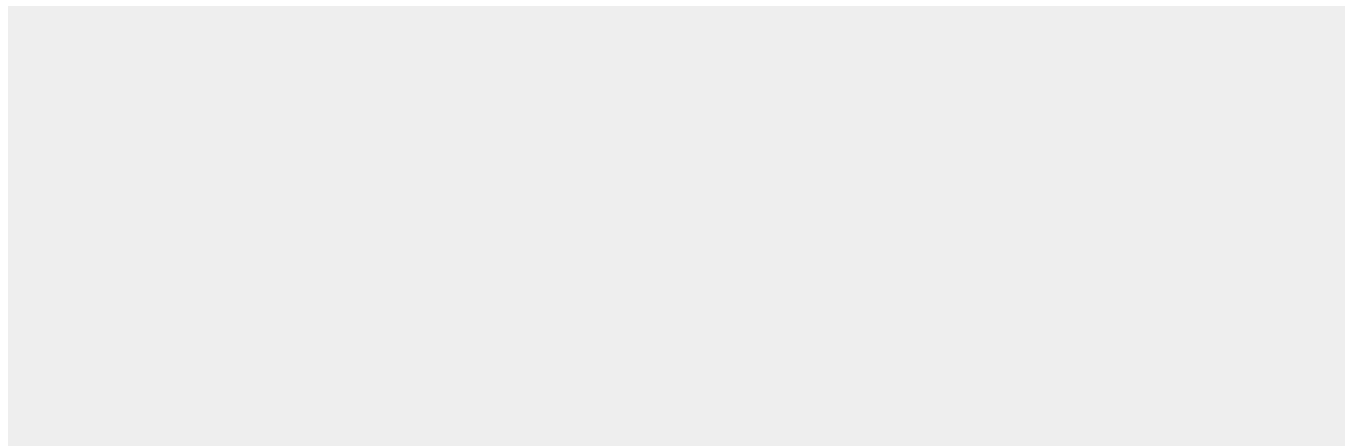
**Cellular Location**

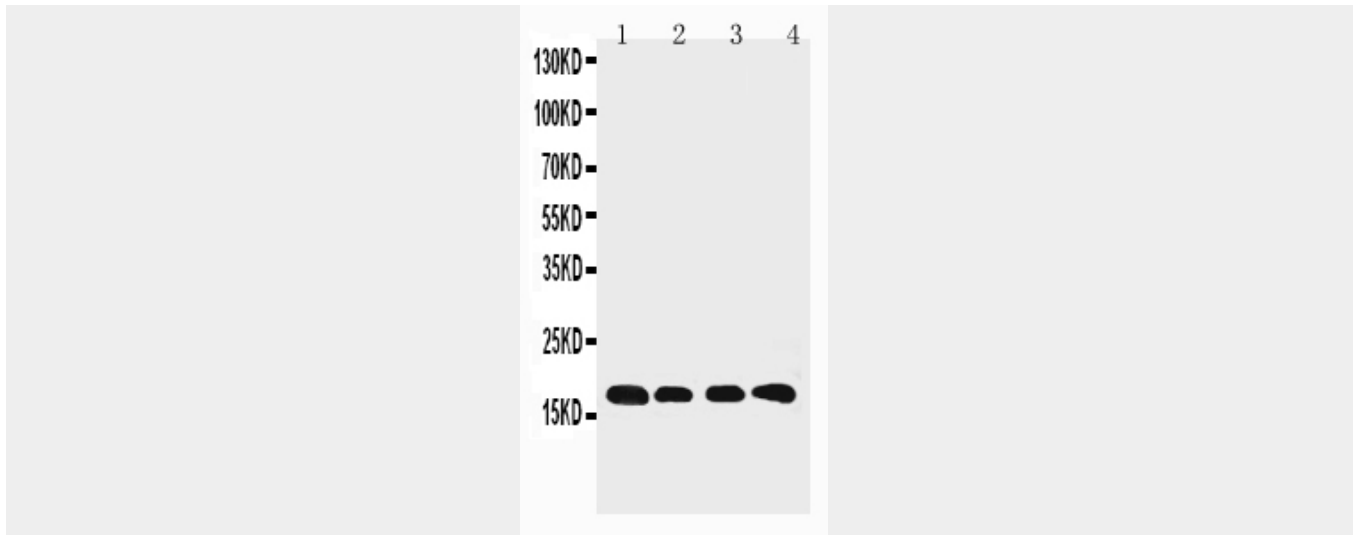
Virion. Note=(Microbial infection)

**Anti-Cyclophilin B Antibody - Protocols**

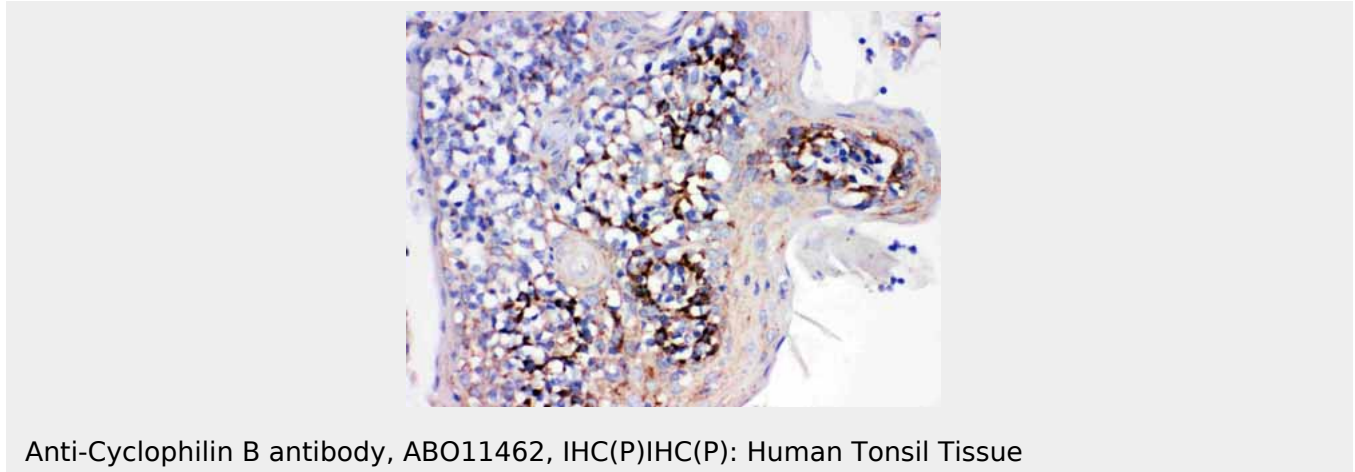
Provided below are standard protocols that you may find useful for product applications.

- [Western Blot](#)
- [Blocking Peptides](#)
- [Dot Blot](#)
- [Immunohistochemistry](#)
- [Immunofluorescence](#)
- [Immunoprecipitation](#)
- [Flow Cytometry](#)
- [Cell Culture](#)

**Anti-Cyclophilin B Antibody - Images**



Anti-Cyclophilin B antibody, ABO11462, Western blotting Lane 1: Rat Ovary Tissue Lysate Lane 2: HELA Cell Lysate Lane 3: 293T Cell Lysate Lane 4: A431 Cell Lysate



Anti-Cyclophilin B antibody, ABO11462, IHC(P) IHC(P): Human Tonsil Tissue

### Anti-Cyclophilin B Antibody - Background

Peptidyl-prolyl cis-trans isomerase B, also known as CYPB, is an enzyme that in humans is encoded by the PPIB gene. This gene is mapped to 15q22.31. The protein encoded by this gene is a cyclosporine-binding protein and is mainly located within the endoplasmic reticulum. It is associated with the secretory pathway and released in biological fluids. This protein can bind to cells derived from T- and B-lymphocytes, and may regulate cyclosporine A-mediated immunosuppression. Variants have been identified in this protein that give rise to recessive forms of osteogenesis imperfecta.