

Anti-EIF2S2 Antibody
Catalog # ABO11468**Specification**

Anti-EIF2S2 Antibody - Product Information

Application	WB
Primary Accession	P20042
Host	Rabbit
Reactivity	Human, Mouse, Rat
Clonality	Polyclonal
Format	Lyophilized

Description

Rabbit IgG polyclonal antibody for Eukaryotic translation initiation factor 2 subunit 2(EIF2S2) detection. Tested with WB in Human;Mouse;Rat.

Reconstitution

Add 0.2ml of distilled water will yield a concentration of 500ug/ml.

Anti-EIF2S2 Antibody - Additional Information

Gene ID 8894

Other Names

Eukaryotic translation initiation factor 2 subunit 2, Eukaryotic translation initiation factor 2 subunit beta, eIF-2-beta, EIF2S2, EIF2B

Calculated MW

38388 MW KDa

Application Details

Western blot, 0.1-0.5 µg/ml, Human, Mouse, Rat

Protein Name

Eukaryotic translation initiation factor 2 subunit 2

Contents

Each vial contains 5mg BSA, 0.9mg NaCl, 0.2mg Na₂HPO₄, 0.05mg Thimerosal, 0.05mg NaN₃.

Immunogen

A synthetic peptide corresponding to a sequence at the C-terminus of human EIF2S2(199-214aa FQAVTGKRAQLRAKAN), identical to the related mouse and rat sequences.

Purification

Immunogen affinity purified.

Cross Reactivity

No cross reactivity with other proteins

Storage

At -20°C for one year. After r°Constitution,

at 4°C for one month. It°Can also be aliquotted and stored frozen at -20°C for a longer time.Avoid repeated freezing and thawing.

Anti-EIF2S2 Antibody - Protein Information

Name EIF2S2

Synonyms EIF2B

Function

Component of the eIF2 complex that functions in the early steps of protein synthesis by forming a ternary complex with GTP and initiator tRNA (PubMed:31836389). This complex binds to a 40S ribosomal subunit, followed by mRNA binding to form the 43S pre-initiation complex (43S PIC). Junction of the 60S ribosomal subunit to form the 80S initiation complex is preceded by hydrolysis of the GTP bound to eIF2 and release of an eIF2-GDP binary complex. In order for eIF2 to recycle and catalyze another round of initiation, the GDP bound to eIF2 must exchange with GTP by way of a reaction catalyzed by eIF2B (By similarity).

Cellular Location

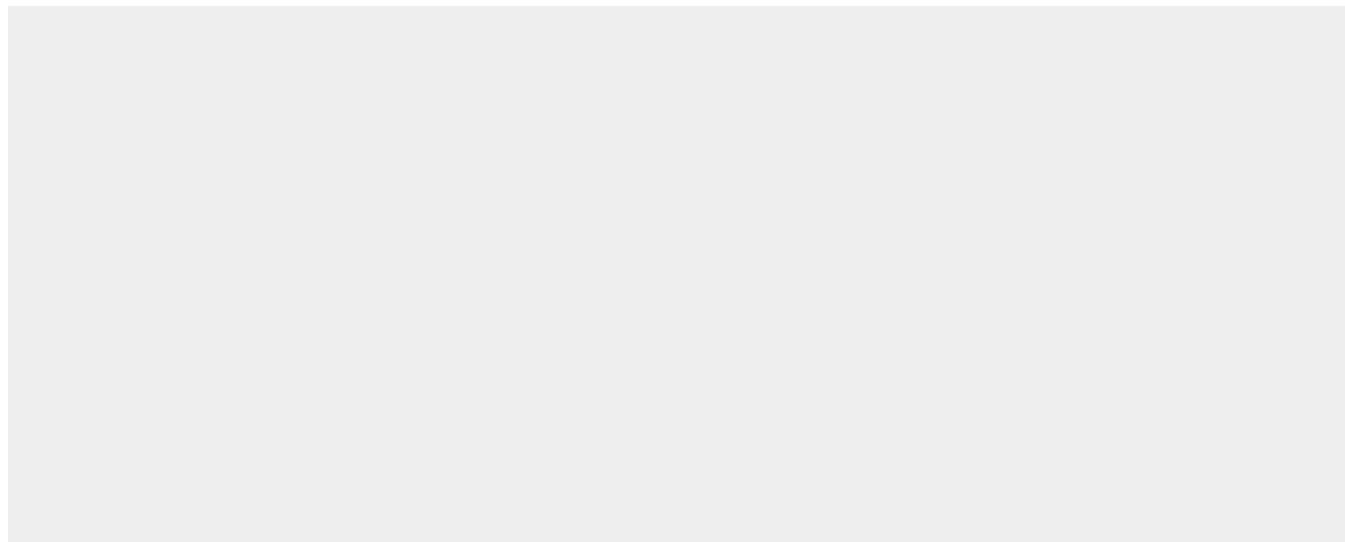
Cytoplasm, cytosol {ECO:0000250|UniProtKB:P56329}

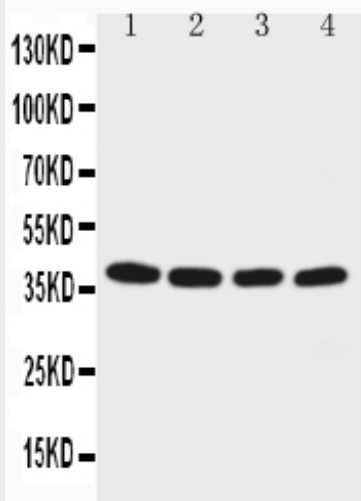
Anti-EIF2S2 Antibody - Protocols

Provided below are standard protocols that you may find useful for product applications.

- [Western Blot](#)
- [Blocking Peptides](#)
- [Dot Blot](#)
- [Immunohistochemistry](#)
- [Immunofluorescence](#)
- [Immunoprecipitation](#)
- [Flow Cytometry](#)
- [Cell Culture](#)

Anti-EIF2S2 Antibody - Images





Anti-EIF2S2 antibody, ABO11468, Western blotting
Lane 1: M451 Cell Lysate
Lane 2: JURKAT Cell Lysate
Lane 3: HELA Cell Lysate
Lane 4: 293T Cell Lysate

Anti-EIF2S2 Antibody - Background

Eukaryotic translation initiation factor 2 subunit 2, also called EIF2S2 is a protein that in humans is encoded by the EIF2S2 gene. This gene belongs to the EIF-2-beta family. EIF2S2 is mapped to 20q11.2. Eukaryotic translation initiation factor 2 (EIF-2) functions in the early steps of protein synthesis by forming a ternary complex with GTP and initiator tRNA and binding to a 40S ribosomal subunit. EIF-2 is composed of three subunits, alpha, beta, and gamma, with the protein encoded by this gene representing the beta subunit. The beta subunit catalyzes the exchange of GDP for GTP, which recycles the EIF-2 complex for another round of initiation.