

Anti-Fibulin 2 Antibody
Catalog # ABO11470**Specification**

Anti-Fibulin 2 Antibody - Product Information

Application	WB
Primary Accession	P98095
Host	Rabbit
Reactivity	Human, Mouse, Rat
Clonality	Polyclonal
Format	Lyophilized

Description

Rabbit IgG polyclonal antibody for Fibulin-2(FBLN2) detection. Tested with WB in Human;Mouse;Rat.

Reconstitution

Add 0.2ml of distilled water will yield a concentration of 500ug/ml.

Anti-Fibulin 2 Antibody - Additional Information

Gene ID 2199

Other Names

Fibulin-2, FIBL-2, FBLN2

Calculated MW

126573 MW KDa

Application Details

Western blot, 0.1-0.5 µg/ml, Human, Rat, Mouse

Subcellular Localization

Secreted, extracellular space, extracellular matrix.

Tissue Specificity

Component of both basement membranes and other connective tissues. Expressed in heart, placenta and ovary.

Protein Name

Fibulin-2

Contents

Each vial contains 5mg BSA, 0.9mg NaCl, 0.2mg Na₂HPO₄, 0.05mg Thimerosal, 0.05mg NaN₃.

Immunogen

A synthetic peptide corresponding to a sequence at the N-terminus of human Fibulin 2(188-205aa DPERHYEDPYSDQEVAE), different from the related mouse and rat sequences by two amino acids.

Purification

Immunogen affinity purified.

Cross Reactivity

No cross reactivity with other proteins

Storage

At -20°C for one year. After reconstitution, at 4°C for one month. It can also be aliquotted and stored frozen at -20°C for a longer time. Avoid repeated freezing and thawing.

Sequence Similarities

Belongs to the fibulin family.

Anti-Fibulin 2 Antibody - Protein Information**Name** FBLN2**Function**

Its binding to fibronectin and some other ligands is calcium dependent. May act as an adapter that mediates the interaction between FBN1 and ELN (PubMed:17255108).

Cellular Location

Secreted, extracellular space, extracellular matrix

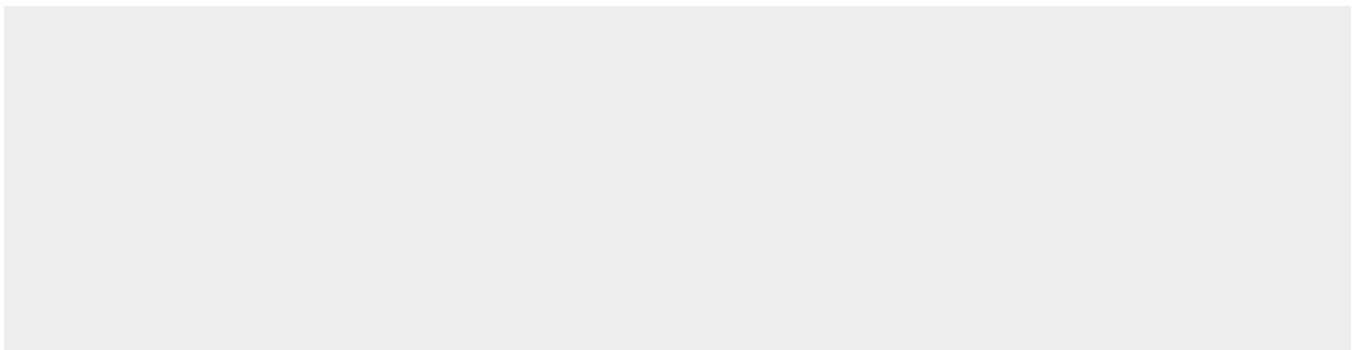
Tissue Location

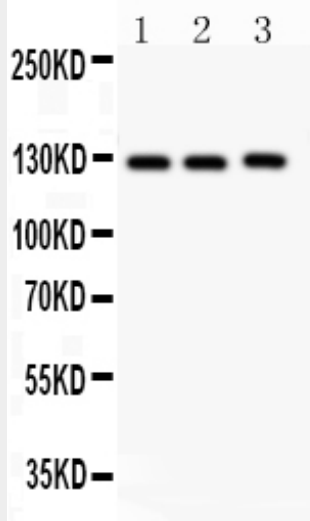
Component of both basement membranes and other connective tissues. Expressed in heart, placenta and ovary

Anti-Fibulin 2 Antibody - Protocols

Provided below are standard protocols that you may find useful for product applications.

- [Western Blot](#)
- [Blocking Peptides](#)
- [Dot Blot](#)
- [Immunohistochemistry](#)
- [Immunofluorescence](#)
- [Immunoprecipitation](#)
- [Flow Cytometry](#)
- [Cell Culture](#)

Anti-Fibulin 2 Antibody - Images



Anti- Fibulin2 antibody, ABO11470, Western blottingAll lanes: Anti Fibulin2 (ABO11470) at 0.5ug/mlLane 1: Rat Liver Tissue Lysate at 50ugLane 2: Rat Brain Tissue Lysate at 50ugLane 3: HELA Whole Cell Lysate at 40ugPredicted bind size: 127KDObserved bind size: 127KD

Anti-Fibulin 2 Antibody - Background

Fibulin-2, also known as FBLN2, is a protein that in humans is encoded by the FBLN2 gene. This gene encodes an extracellular matrix protein, which belongs to the fibulin family. By isotopic in situ hybridization, this gene is mapped to 3p25.1. This protein binds various extracellular ligands and calcium. It may play a role during organ development, in particular, during the differentiation of heart, skeletal and neuronal structures. Alternatively spliced transcript variants encoding different isoforms have been identified. It may play a role in testis development. Its binding to fibronectin and some other ligands is calcium dependent.