

Anti-Profilin 2 Antibody
Catalog # ABO11473**Specification**

Anti-Profilin 2 Antibody - Product Information

Application	WB, IHC
Primary Accession	P35080
Host	Rabbit
Reactivity	Human, Mouse, Rat
Clonality	Polyclonal
Format	Lyophilized

Description

Rabbit IgG polyclonal antibody for Profilin-2(PFN2) detection. Tested with WB, IHC-P in Human;Mouse;Rat.

Reconstitution

Add 0.2ml of distilled water will yield a concentration of 500ug/ml.

Anti-Profilin 2 Antibody - Additional Information

Gene ID 5217

Other Names

Profilin-2, Profilin II, PFN2

Calculated MW

15046 MW KDa

Application Details

Immunohistochemistry(Paraffin-embedded Section), 0.5-1 µg/ml, Human, Rat, Mouse, By Heat
Western blot, 0.1-0.5 µg/ml, Rat, Human, Mouse

Subcellular Localization

Cytoplasm, cytoskeleton.

Tissue Specificity

Highly expressed in brain, skeletal muscle and kidney and less strongly in heart, placenta, lung and liver.

Protein Name

Profilin-2

Contents

Each vial contains 5mg BSA, 0.9mg NaCl, 0.2mg Na₂HPO₄, 0.05mg Thimerosal, 0.05mg NaN₃.

Immunogen

A synthetic peptide corresponding to a sequence at the C-terminus of human Profilin 2(125-140aa NKKAYSMAYLRDSGF), identical to the related mouse and rat sequences.

Purification

Immunogen affinity purified.

Cross Reactivity

No cross reactivity with other proteins

Storage

At -20°C for one year. After reconstitution, at 4°C for one month. It can also be aliquotted and stored frozen at -20°C for a longer time. Avoid repeated freezing and thawing.

Anti-Profilin 2 Antibody - Protein Information

Name PFN2

Function

Binds to actin and affects the structure of the cytoskeleton. At high concentrations, profilin prevents the polymerization of actin, whereas it enhances it at low concentrations. By binding to PIP2, it inhibits the formation of IP3 and DG.

Cellular Location

Cytoplasm, cytoskeleton.

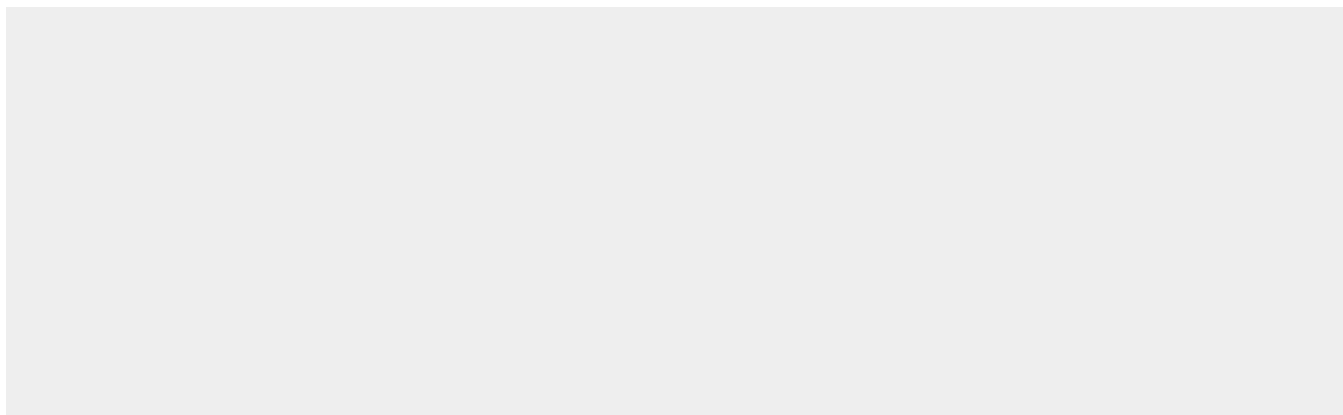
Tissue Location

Highly expressed in brain, skeletal muscle and kidney and less strongly in heart, placenta, lung and liver

Anti-Profilin 2 Antibody - Protocols

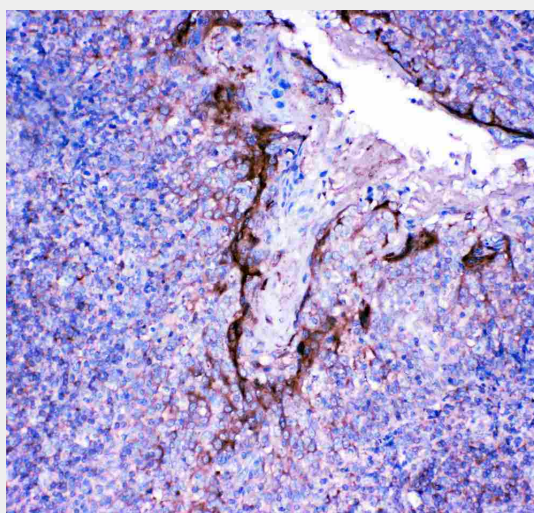
Provided below are standard protocols that you may find useful for product applications.

- [Western Blot](#)
- [Blocking Peptides](#)
- [Dot Blot](#)
- [Immunohistochemistry](#)
- [Immunofluorescence](#)
- [Immunoprecipitation](#)
- [Flow Cytometry](#)
- [Cell Culture](#)

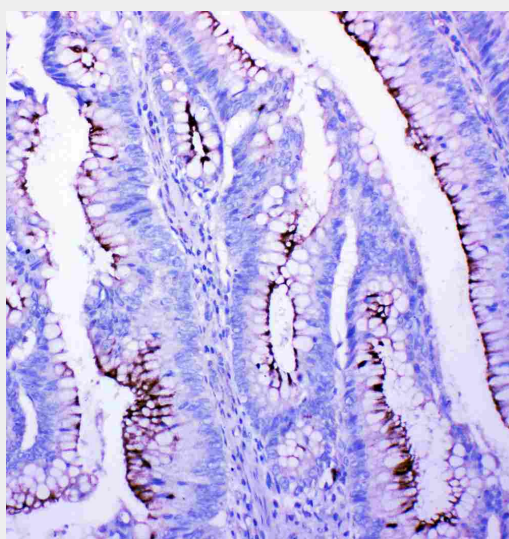
Anti-Profilin 2 Antibody - Images



Anti- Profilin2 antibody, ABO11473, Western blottingAll lanes: Anti Profilin2 (ABO11473) at 0.5ug/mlWB: Rat Brain Tissue Lysate at 50ugPredicted bind size: 15KDObserved bind size: 15KD



Anti- Profilin2 antibody, ABO11473, IHC(P)IHC(P): Human Tonsil Tissue



Anti- Profilin2 antibody, ABO11473, IHC(P)IHC(P): Human Intestinal Cancer Tissue

Anti-Profilin 2 Antibody - Background

Profilin-2, also called PFN2, is a protein that in humans is encoded by the PFN2 gene. The protein encoded by this gene is a ubiquitous actin monomer-binding protein belonging to the profilin family. This gene is mapped to 3q25.1. It is thought to regulate actin polymerization in response to extracellular signals. There are two alternatively spliced transcript variants encoding different isoforms described for this gene. It binds to actin and affects the structure of the cytoskeleton. At high concentrations, profilin prevents the polymerization of actin, whereas it enhances it at low concentrations. By binding to PIP2, it inhibits the formation of IP3 and DG.