

Anti-SLC16A4 Antibody
Catalog # ABO11498**Specification**

Anti-SLC16A4 Antibody - Product Information

Application	WB, IHC
Primary Accession	O15374
Host	Rabbit
Reactivity	Human, Mouse, Rat
Clonality	Polyclonal
Format	Lyophilized

Description

Rabbit IgG polyclonal antibody for Monocarboxylate transporter 5(SLC16A4) detection. Tested with WB, IHC-P in Human;Mouse;Rat.

Reconstitution

Add 0.2ml of distilled water will yield a concentration of 500ug/ml.

Anti-SLC16A4 Antibody - Additional Information

Gene ID 9122

Other Names

Monocarboxylate transporter 5, MCT 5, Monocarboxylate transporter 4, MCT 4, Solute carrier family 16 member 4, SLC16A4, MCT4, MCT5

Calculated MW

54022 MW KDa

Application Details

Immunohistochemistry(Paraffin-embedded Section), 0.5-1 µg/ml, Human, Rat, Mouse, By Heat
Western blot, 0.1-0.5 µg/ml, Human, Rat, Mouse

Subcellular Localization

Cell membrane; Multi-pass membrane protein.

Protein Name

Monocarboxylate transporter 5

Contents

Each vial contains 5mg BSA, 0.9mg NaCl, 0.2mg Na₂HPO₄, 0.05mg Thimerosal, 0.05mg NaN₃.

Immunogen

A synthetic peptide corresponding to a sequence at the N-terminus of human SLC16A4(134-148aa VVTTKYFKKRLALST), different from the related rat and mouse sequences by two amino acids.

Purification

Immunogen affinity purified.

Cross Reactivity

No cross reactivity with other proteins

Storage

At -20°C for one year. After reconstitution, at 4°C for one month. It can also be aliquotted and stored frozen at -20°C for a longer time. Avoid repeated freezing and thawing.

Anti-SLC16A4 Antibody - Protein Information

Name SLC16A4

Synonyms MCT4, MCT5

Function

Proton-linked monocarboxylate transporter. Catalyzes the rapid transport across the plasma membrane of many monocarboxylates such as lactate, pyruvate, branched-chain oxo acids derived from leucine, valine and isoleucine, and the ketone bodies acetoacetate, beta-hydroxybutyrate and acetate (By similarity).

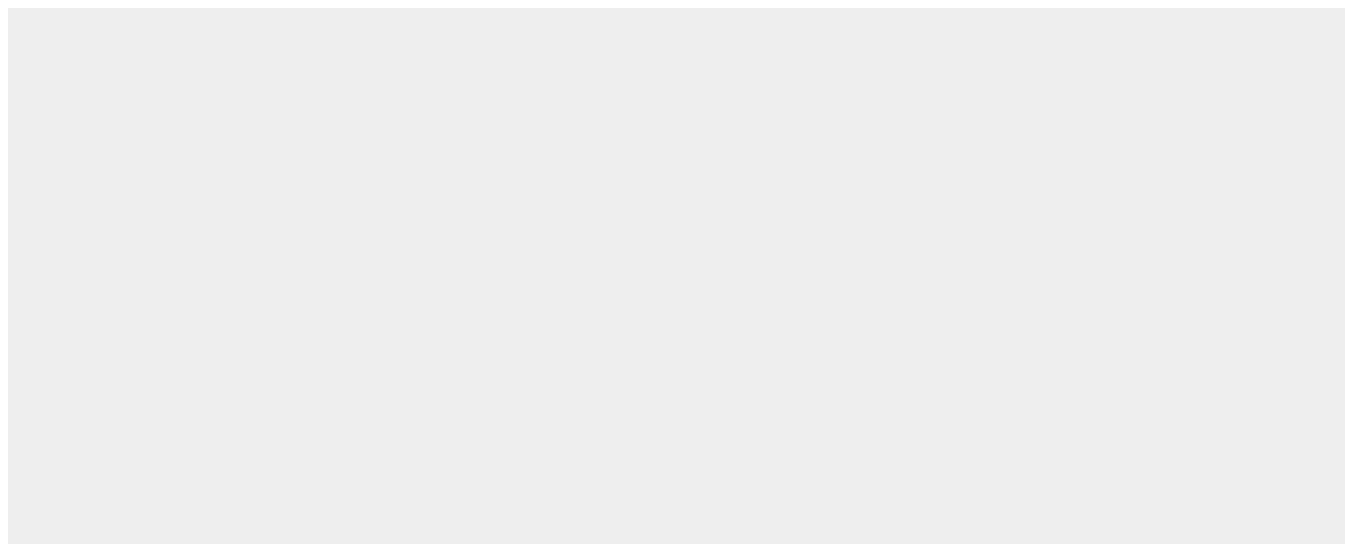
Cellular Location

Cell membrane; Multi-pass membrane protein.

Anti-SLC16A4 Antibody - Protocols

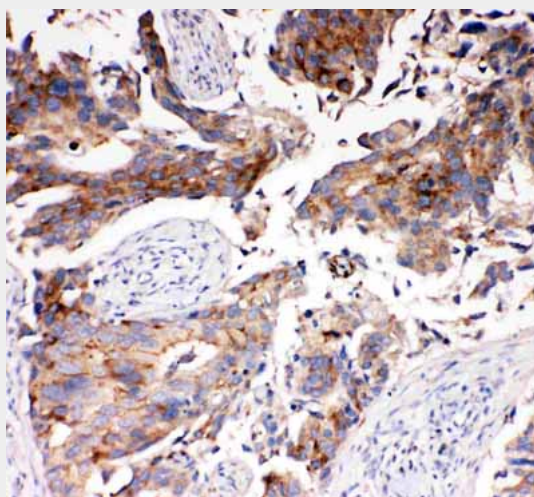
Provided below are standard protocols that you may find useful for product applications.

- [Western Blot](#)
- [Blocking Peptides](#)
- [Dot Blot](#)
- [Immunohistochemistry](#)
- [Immunofluorescence](#)
- [Immunoprecipitation](#)
- [Flow Cytometry](#)
- [Cell Culture](#)

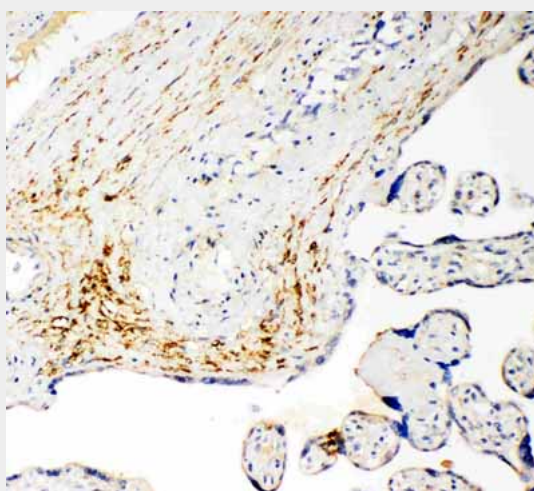
Anti-SLC16A4 Antibody - Images



Anti-SLC16A4 antibody, ABO11498, Western blotting
Lane 1: Rat Testis Tissue Lysate
Lane 2: JURKAT Cell Lysate
Lane 3: HELA Cell Lysate
Lane 4: MCF-7 Cell Lysate



Anti-SLC16A4 antibody, ABO11498, IHC(P)
IHC(P): Human Mammary Cancer Tissue



Anti-SLC16A4 antibody, ABO11498, IHC(P)
IHC(P): Human Placenta Cancer Tissue

Anti-SLC16A4 Antibody - Background

Monocarboxylate transporter 5, also called Solute carrier family 16 member 4 or MCT4, is a protein that in humans is encoded by the SLC16A4 gene. This gene is mapped to 1p13.3. It acts as the proton-linked monocarboxylate transporter. This gene catalyzes the rapid transport across the plasma membrane of many monocarboxylates such as lactate, pyruvate, branched-chain oxo acids derived from leucine, valine and isoleucine, and the ketone bodies acetoacetate, beta-hydroxybutyrate and acetate.