

Anti-FbxL4 Antibody
Catalog # ABO11501**Specification**

Anti-FbxL4 Antibody - Product Information

Application	WB, IHC
Primary Accession	Q9UKA2
Host	Rabbit
Reactivity	Human, Mouse, Rat
Clonality	Polyclonal
Format	Lyophilized

Description

Rabbit IgG polyclonal antibody for F-box/LRR-repeat protein 4(FBXL4) detection. Tested with WB, IHC-P in Human;Mouse;Rat.

Reconstitution

Add 0.2ml of distilled water will yield a concentration of 500ug/ml.

Anti-FbxL4 Antibody - Additional Information

Gene ID 26235

Other Names

F-box/LRR-repeat protein 4, F-box and leucine-rich repeat protein 4, F-box protein FBL4/FBL5, FBXL4, FBL4, FBL5

Calculated MW

70097 MW KDa

Application Details

Immunohistochemistry(Paraffin-embedded Section), 0.5-1 µg/ml, Human, Mouse, Rat, By Heat
Western blot, 0.1-0.5 µg/ml, Human, Rat, Mouse

Subcellular Localization

Cytoplasm. Nucleus. Mitochondrion.

Tissue Specificity

Expressed in heart, kidney, liver, lung, pancreas, and placenta, but not in skeletal muscle. .

Protein Name

F-box/LRR-repeat protein 4

Contents

Each vial contains 5mg BSA, 0.9mg NaCl, 0.2mg Na₂HPO₄, 0.05mg Thimerosal, 0.05mg NaN₃.

Immunogen

A synthetic peptide corresponding to a sequence at the C-terminus of human FbxL4(552-565aa DELASNCTRLQQLD), different from the related mouse and rat sequences by one amino acid.

Purification

Immunogen affinity purified.

Cross Reactivity

No cross reactivity with other proteins

Storage

At -20°C for one year. After reconstitution, at 4°C for one month. It can also be aliquotted and stored frozen at -20°C for a longer time. Avoid repeated freezing and thawing.

Sequence Similarities

Contains 1 F-box domain.

Anti-FbxL4 Antibody - Protein Information

Name FBXL4

Synonyms FBL4, FBL5

Cellular Location

Cytoplasm. Nucleus. Mitochondrion.

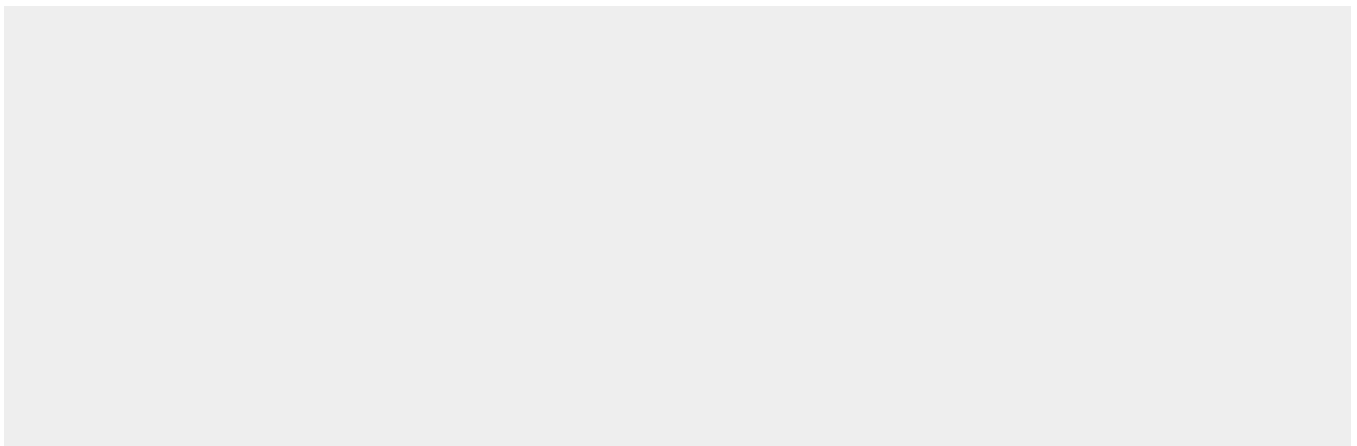
Tissue Location

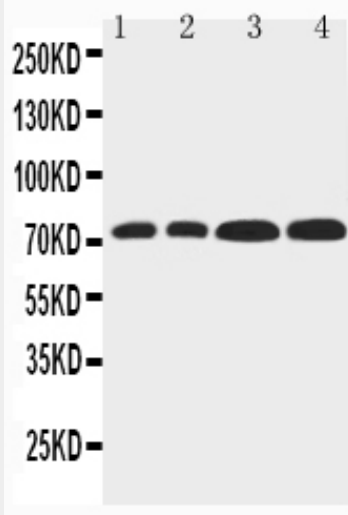
Expressed in heart, kidney, liver, lung, pancreas, and placenta, but not in skeletal muscle

Anti-FbxL4 Antibody - Protocols

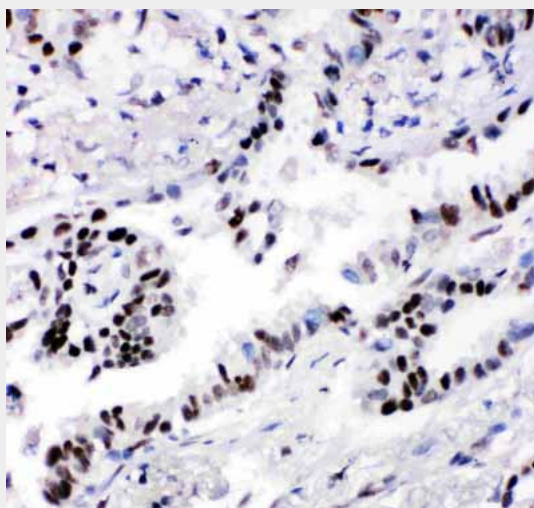
Provided below are standard protocols that you may find useful for product applications.

- [Western Blot](#)
- [Blocking Peptides](#)
- [Dot Blot](#)
- [Immunohistochemistry](#)
- [Immunofluorescence](#)
- [Immunoprecipitation](#)
- [Flow Cytometry](#)
- [Cell Culture](#)

Anti-FbxL4 Antibody - Images



Anti-FbxL4 antibody, ABO11501, Western blotting
Lane 1: Rat Liver Tissue Lysate
Lane 2: Rat Lung Tissue Lysate
Lane 3: HELA Cell Lysate
Lane 4: PANC Cell Lysate



Anti-FbxL4 antibody, ABO11501, IHC(P)
IHC(P): Human Lung Cancer Tissue

Anti-FbxL4 Antibody - Background

FBXL4, also known as FBL4 or FBL5 encodes a member of the F-box protein family, which is characterized by an approximately 40 amino acid motif, the F-box. This gene is mapped to 6q16.1. F-box proteins constitute one subunit of modular E3 ubiquitin ligase complexes, called SCF complexes, which function in phosphorylation-dependent ubiquitination. The F-box domain mediates protein-protein interactions and binds directly to S-phase kinase-associated protein 1. In addition to an F-box domain, the encoded protein contains at least 9 tandem leucine-rich repeats. The ubiquitin ligase complex containing the encoded protein may function in cell-cycle control by regulating levels of lysine-specific demethylase 4A.