

**Anti-Cdc6 Antibody**  
**Catalog # ABO11509****Specification**

---

**Anti-Cdc6 Antibody - Product Information**

Application	WB
Primary Accession	<a href="#">Q99741</a>
Host	Rabbit
Reactivity	Human
Clonality	Polyclonal
Format	Lyophilized

**Description**

Rabbit IgG polyclonal antibody for Cell division control protein 6 homolog(CDC6) detection. Tested with WB in Human.

**Reconstitution**

Add 0.2ml of distilled water will yield a concentration of 500ug/ml.

**Anti-Cdc6 Antibody - Additional Information**

**Gene ID** 990

**Other Names**

Cell division control protein 6 homolog, CDC6-related protein, Cdc18-related protein, HsCdc18, p62(cdc6), HsCDC6, CDC6, CDC18L

**Calculated MW**

62720 MW KDa

**Application Details**

Western blot, 0.1-0.5 µg/ml, Human<br>

**Subcellular Localization**

Nucleus . Cytoplasm . The protein is nuclear in G1 and cytoplasmic in S-phase cells.

**Protein Name**

Cell division control protein 6 homolog

**Contents**

Each vial contains 5mg BSA, 0.9mg NaCl, 0.2mg Na2HPO4, 0.05mg Thimerosal, 0.05mg NaN3.

**Immunogen**

A synthetic peptide corresponding to a sequence at the C-terminus of human Cdc6(484-503aa KLYEAYSKVCRKQQVAAVDQ).

**Purification**

Immunogen affinity purified.

**Cross Reactivity**

No cross reactivity with other proteins

Storage

**At -20°C for one year. After reconstitution, at 4°C for one month. It can also be aliquotted and stored frozen at -20°C for a longer time. Avoid repeated freezing and thawing.**

#### Sequence Similarities

Belongs to the CDC6/cdc18 family.

### Anti-Cdc6 Antibody - Protein Information

**Name** CDC6

**Synonyms** CDC18L

#### Function

Involved in the initiation of DNA replication. Also participates in checkpoint controls that ensure DNA replication is completed before mitosis is initiated.

#### Cellular Location

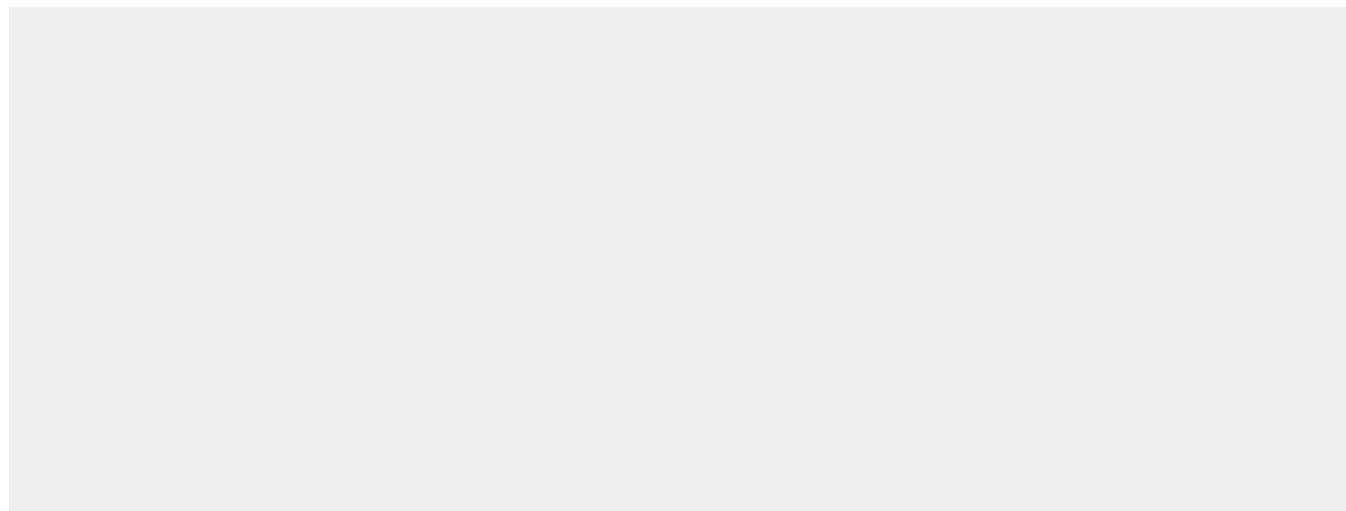
Nucleus. Cytoplasm Note=The protein is nuclear in G1 and cytoplasmic in S-phase cells (PubMed:9566895).

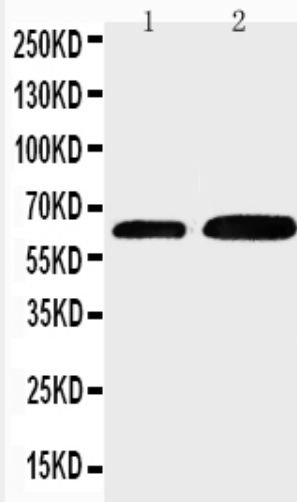
### Anti-Cdc6 Antibody - Protocols

Provided below are standard protocols that you may find useful for product applications.

- [Western Blot](#)
- [Blocking Peptides](#)
- [Dot Blot](#)
- [Immunohistochemistry](#)
- [Immunofluorescence](#)
- [Immunoprecipitation](#)
- [Flow Cytometry](#)
- [Cell Culture](#)

### Anti-Cdc6 Antibody - Images





Anti-Cdc6 antibody, ABO11509, Western blotting Lane 1: JURKAT Cell Lysate Lane 2: MCF-7 Cell Lysate

### Anti-Cdc6 Antibody - Background

Cell division control protein 6 homolog, also called CDC18L or CDC6, is a protein that in humans is encoded by the CDC6 gene. By analysis of somatic cell hybrids and by fluorescence in situ hybridization, this gene is mapped to 17q21.2. The protein encoded by this gene is highly similar to *Saccharomyces cerevisiae* Cdc6, a protein essential for the initiation of DNA replication. This protein functions as a regulator at the early steps of DNA replication. It localizes in cell nucleus during cell cycle G1, but translocates to the cytoplasm at the start of S phase. The subcellular translocation of this protein during cell cycle is regulated through its phosphorylation by Cdks. Transcription of this protein was reported to be regulated in response to mitogenic signals through transcriptional control mechanism involving E2F proteins. This gene is involved in the initiation of DNA replication.