

**Anti-Dopamine Receptor D5 Antibody**  
**Catalog # ABO11514****Specification**

---

**Anti-Dopamine Receptor D5 Antibody - Product Information**

Application	WB
Primary Accession	<a href="#">Q8BLD9</a>
Host	Rabbit
Reactivity	Human, Mouse, Rat
Clonality	Polyclonal
Format	Lyophilized

**Description**

Rabbit IgG polyclonal antibody for D(1B) dopamine receptor(DRD5) detection. Tested with WB in Human;Mouse;Rat.

**Reconstitution**

Add 0.2ml of distilled water will yield a concentration of 500ug/ml.

**Anti-Dopamine Receptor D5 Antibody - Additional Information**

**Gene ID** 13492

**Other Names**

D(1B) dopamine receptor, D(5) dopamine receptor, Dopamine D5 receptor, Drd5

**Calculated MW**

53076 MW KDa

**Application Details**

Western blot, 0.1-0.5 µg/ml, Human, Mouse, Rat<br>

**Subcellular Localization**

Cell membrane; Multi-pass membrane protein.

**Protein Name**

D(1B) dopamine receptor

**Contents**

Each vial contains 5mg BSA, 0.9mg NaCl, 0.2mg Na<sub>2</sub>HPO<sub>4</sub>, 0.05mg Thimerosal, 0.05mg NaN<sub>3</sub>.

**Immunogen**

A synthetic peptide corresponding to a sequence at the C-terminus of mouse Dopamine Receptor D5(388-407aa LISYNQDTVHREIAAAYVH), different from the related rat sequence by two amino acids, and from the related human sequence by three amino acids.

**Purification**

Immunogen affinity purified.

**Cross Reactivity**

No cross reactivity with other proteins

Storage

**At -20°C for one year. After reconstitution, at 4°C for one month. It can also be aliquotted and stored frozen at -20°C for a longer time. Avoid repeated freezing and thawing.**

### Anti-Dopamine Receptor D5 Antibody - Protein Information

**Name** Drd5

#### Function

Dopamine receptor whose activity is mediated by G proteins which activate adenylyl cyclase.

#### Cellular Location

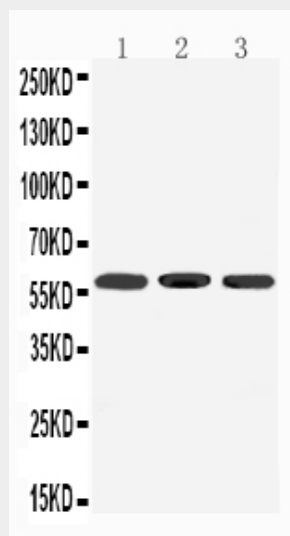
Cell membrane; Multi-pass membrane protein.

### Anti-Dopamine Receptor D5 Antibody - Protocols

Provided below are standard protocols that you may find useful for product applications.

- [Western Blot](#)
- [Blocking Peptides](#)
- [Dot Blot](#)
- [Immunohistochemistry](#)
- [Immunofluorescence](#)
- [Immunoprecipitation](#)
- [Flow Cytometry](#)
- [Cell Culture](#)

### Anti-Dopamine Receptor D5 Antibody - Images



Anti-Dopamine Receptor D5 antibody, ABO11514, Western blotting All lanes: Anti Dopamine Receptor D5 (ABO11514) at 0.5ug/ml  
Lane 1: Rat Brain Tissue Lysate at 50ug  
Lane 2: Mouse Brain Tissue Lysate at 50ug  
Lane 3: U87 Whole Cell Lysate at 40ug  
Predicted bind size:

53KD Observed bind size: 58KD

### **Anti-Dopamine Receptor D5 Antibody - Background**

D(1B) dopamine receptor (DRD5), also called DRD1B or DRD1L2 is a protein that in humans is encoded by the DRD5 gene. This gene is mapped to 4p16.1. This gene encodes the D5 subtype of the dopamine receptor. The D5 subtype is a G-protein coupled receptor which stimulates adenylyl cyclase. This receptor is expressed in neurons in the limbic regions of the brain. It has a 10-fold higher affinity for dopamine than the D1 subtype. Pseudogenes related to this gene reside on chromosomes 1 and 2. Compared with DRD1, DRD5 displayed a higher affinity for dopamine and was able to stimulate a biphasic rather than a monophasic intracellular accumulation of cAMP.