

**Anti-MMP24 Antibody**  
**Catalog # ABO11522****Specification**

---

**Anti-MMP24 Antibody - Product Information**

Application	WB
Primary Accession	<a href="#">Q9Y5R2</a>
Host	Rabbit
Reactivity	Human, Mouse, Rat
Clonality	Polyclonal
Format	Lyophilized

**Description**

Rabbit IgG polyclonal antibody for Matrix metalloproteinase-24(MMP24) detection. Tested with WB in Human;Mouse;Rat.

**Reconstitution**

Add 0.2ml of distilled water will yield a concentration of 500ug/ml.

**Anti-MMP24 Antibody - Additional Information**

**Gene ID** 10893

**Other Names**

Matrix metalloproteinase-24, MMP-24, 3.4.24.-, Membrane-type matrix metalloproteinase 5, MT-MMP 5, MTMMP5, Membrane-type-5 matrix metalloproteinase, MT5-MMP, MT5MMP, Processed matrix metalloproteinase-24, MMP24, MT5MMP

**Calculated MW**

73231 MW KDa

**Application Details**

Western blot, 0.1-0.5 µg/ml, Human, Mouse, Rat<br>

**Subcellular Localization**

Matrix metalloproteinase-24: Cell membrane ; Single-pass type I membrane protein . Golgi apparatus, trans-Golgi network membrane ; Single-pass type I membrane protein . Recycled back to the plasma membrane through the trans-Golgi network via interaction with APBA3. .

**Tissue Specificity**

Predominantly expressed in brain, kidney, pancreas and lung. Overexpressed in a series of brain tumors, including astrocytomas and glioblastomas. .

**Protein Name**

Matrix metalloproteinase-24

**Contents**

Each vial contains 5mg BSA, 0.9mg NaCl, 0.2mg Na<sub>2</sub>HPO<sub>4</sub>, 0.05mg Thimerosal, 0.05mg NaN<sub>3</sub>.

**Immunogen**

A synthetic peptide corresponding to a sequence at the N-terminus of human MMP24(208-225aa YHEIKSDRKEADIMIFFA), identical to the related mouse and rat sequences.

**Purification**

Immunogen affinity purified.

**Cross Reactivity**

No cross reactivity with other proteins

**Storage**

**At -20°C for one year. After reconstitution, at 4°C for one month. It can also be aliquotted and stored frozen at -20°C for a longer time. Avoid repeated freezing and thawing.**

**Sequence Similarities**

Belongs to the peptidase M10A family.

**Anti-MMP24 Antibody - Protein Information**

**Name** MMP24

**Synonyms** MT5MMP

**Function**

Metalloprotease that mediates cleavage of N-cadherin (CDH2) and acts as a regulator of neuro-immune interactions and neural stem cell quiescence. Involved in cell-cell interactions between nociceptive neurites and mast cells, possibly by mediating cleavage of CDH2, thereby acting as a mediator of peripheral thermal nociception and inflammatory hyperalgesia. Key regulator of neural stem cells quiescence by mediating cleavage of CDH2, affecting CDH2-mediated anchorage of neural stem cells to ependymocytes in the adult subependymal zone, leading to modulate their quiescence. May play a role in axonal growth. Able to activate progelatinase A. May also be a proteoglycanase involved in degradation of proteoglycans, such as dermatan sulfate and chondroitin sulfate proteoglycans. Cleaves partially fibronectin, but not collagen type I, nor laminin (By similarity).

**Cellular Location**

[Matrix metalloproteinase-24]: Cell membrane; Single-pass type I membrane protein. Golgi apparatus, trans-Golgi network membrane; Single-pass type I membrane protein. Note=Recycled back to the plasma membrane through the trans-Golgi network via interaction with APBA3

**Tissue Location**

Predominantly expressed in brain, kidney, pancreas and lung. Overexpressed in a series of brain tumors, including astrocytomas and glioblastomas.

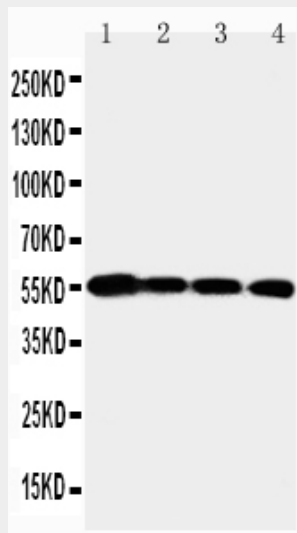
**Anti-MMP24 Antibody - Protocols**

Provided below are standard protocols that you may find useful for product applications.

- [Western Blot](#)
- [Blocking Peptides](#)
- [Dot Blot](#)
- [Immunohistochemistry](#)
- [Immunofluorescence](#)

- [Immunoprecipitation](#)
- [Flow Cytometry](#)
- [Cell Culture](#)

#### Anti-MMP24 Antibody - Images



Anti-MMP24 antibody, ABO11522, Western blotting  
Lane 1: PANC Cell Lysate  
Lane 2: HELA Cell Lysate  
Lane 3: SMMC Cell Lysate  
Lane 4: A549 Cell Lysate

#### Anti-MMP24 Antibody - Background

Matrix metalloproteinase-24, also known as MT5MMP or MMP25, is an enzyme that in humans is encoded by the MMP24 gene. Proteins of the matrix metalloproteinase(MMP) family are involved in the breakdown of extracellular matrix in normal physiological processes, such as embryonic development, reproduction, and tissue remodeling, as well as in disease processes, such as arthritis and metastasis. Most MMP's are secreted as inactive proproteins which are activated when cleaved by extracellular proteinases. However, the protein encoded by this gene is a member of the membrane-type MMP(MT-MMP) subfamily; each member of this subfamily contains a potential transmembrane domain suggesting that these proteins are expressed at the cell surface rather than secreted. This protein activates MMP2 by cleavage. The gene has previously been referred to as MMP25 but has been renamed MMP24. This gene may be a proteoglycanase involved in degradation of proteoglycans, such as dermatan sulfate and chondroitin sulfate proteoglycans.