

**Anti-HNF6 Antibody**  
**Catalog # ABO11524****Specification**

---

**Anti-HNF6 Antibody - Product Information**

Application	WB, IHC-P, IHC-F, ICC
Primary Accession	<a href="#">Q9UBC0</a>
Host	Rabbit
Reactivity	Human, Mouse, Rat
Clonality	Polyclonal
Format	Lyophilized

**Description**

Rabbit IgG polyclonal antibody for Hepatocyte nuclear factor 6(ONECUT1) detection. Tested with WB, IHC-P, IHC-F, ICC in Human;Mouse;Rat.

**Reconstitution**

Add 0.2ml of distilled water will yield a concentration of 500ug/ml.

**Anti-HNF6 Antibody - Additional Information**

**Gene ID** 3175

**Other Names**

Hepatocyte nuclear factor 6, HNF-6, One cut domain family member 1, One cut homeobox 1, ONECUT1, HNF6, HNF6A

**Calculated MW**

51023 MW KDa

**Application Details**

Immunocytochemistry , 0.5-1 µg/ml, Human, Mouse, Rat<br>Immunohistochemistry(Frozen Section), 0.5-1 µg/ml, Rat, Human, Mouse<br>Immunohistochemistry(Paraffin-embedded Section), 0.5-1 µg/ml, Human, Rat, Mouse, By Heat<br>Western blot, 0.1-0.5 µg/ml, Human, Mouse, Rat<br>

**Subcellular Localization**

Nucleus.

**Tissue Specificity**

Highly expressed in liver; lower expression in testis and skin.

**Protein Name**

Hepatocyte nuclear factor 6

**Contents**

Each vial contains 5mg BSA, 0.9mg NaCl, 0.2mg Na<sub>2</sub>HPO<sub>4</sub>, 0.05mg Thimerosal, 0.05mg NaN<sub>3</sub>.

**Immunogen**

A synthetic peptide corresponding to a sequence at the N-terminus of human HNF6(187-203aa

LGSIHNSQQGLPHYAHP), identical to the related mouse and rat sequences.

**Purification**

Immunogen affinity purified.

**Cross Reactivity**

No cross reactivity with other proteins

**Storage**

**At -20°C for one year. After reconstitution, at 4°C for one month. It can also be aliquotted and stored frozen at -20°C for a longer time. Avoid repeated freezing and thawing.**

**Sequence Similarities**

Belongs to the CUT homeobox family.

**Anti-HNF6 Antibody - Protein Information**

**Name** ONECUT1

**Synonyms** HNF6, HNF6A

**Function**

Transcriptional activator. Binds the consensus sequence 5'- DHWATTGAYTWWD-3' on a variety of gene promoters such as those of HNF3B and TTR. Important for liver genes transcription.

**Cellular Location**

Nucleus.

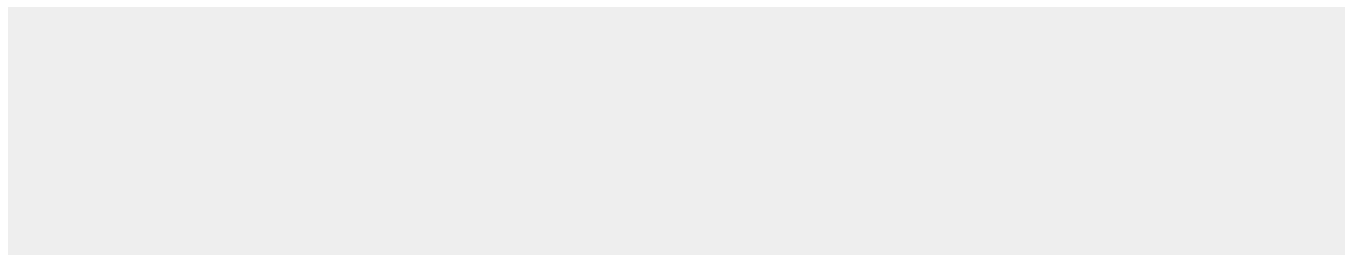
**Tissue Location**

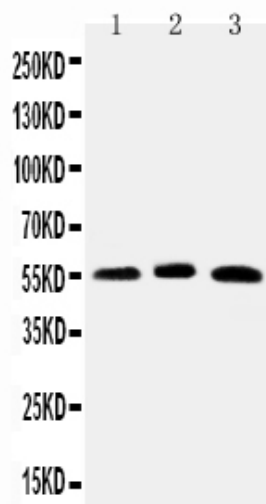
Highly expressed in liver; lower expression in testis and skin

**Anti-HNF6 Antibody - Protocols**

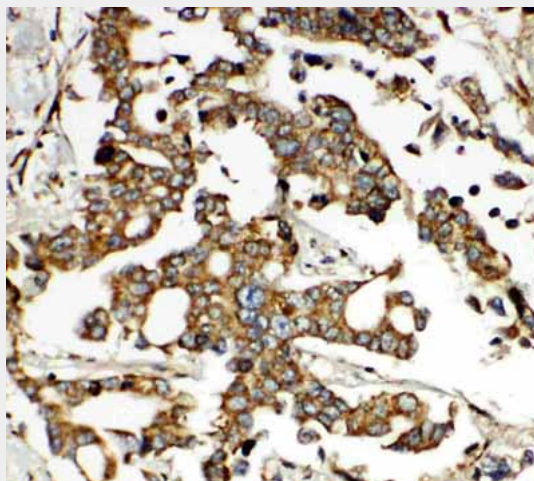
Provided below are standard protocols that you may find useful for product applications.

- [Western Blot](#)
- [Blocking Peptides](#)
- [Dot Blot](#)
- [Immunohistochemistry](#)
- [Immunofluorescence](#)
- [Immunoprecipitation](#)
- [Flow Cytometry](#)
- [Cell Culture](#)

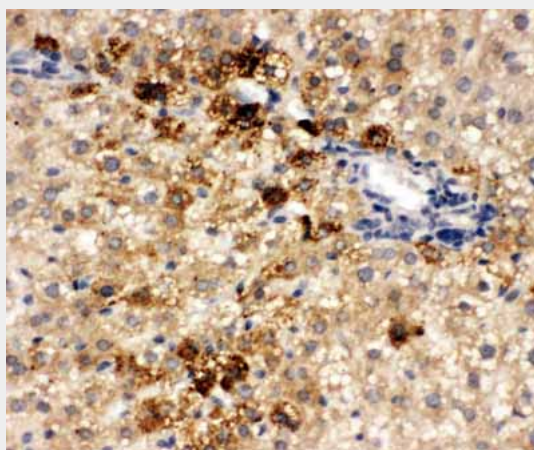
**Anti-HNF6 Antibody - Images**



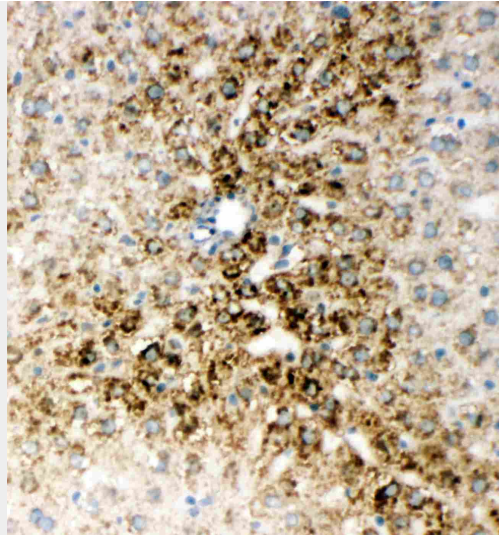
Anti-HNF6 antibody, ABO11524, Western blotting  
Lane 1: Rat Liver Tissue Lysate  
Lane 2: Mouse Liver Tissue Lysate  
Lane 3: HELA Cell Lysate



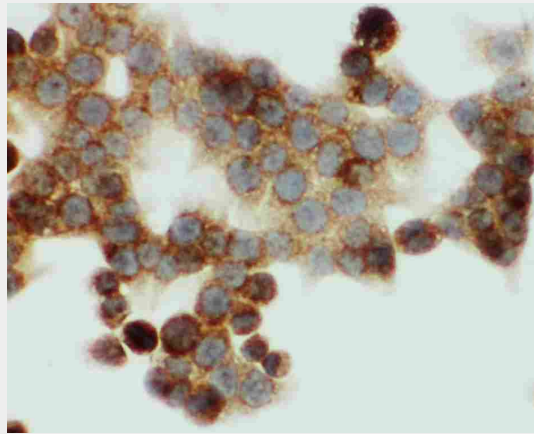
Anti-HNF6 antibody, ABO11524, IHC(P)  
IHC(P): Human Liver Cancer Tissue



Anti-HNF6 antibody, ABO11524, IHC(P)  
IHC(P): Rat Liver Tissue



Anti-HNF6 antibody, ABO11524, IHC(F)IHC(F): Rat Liver Tissue



Anti-HNF6 antibody, ABO11524, ICCICC: HCT116 Cell

#### **Anti-HNF6 Antibody - Background**

One cut homeobox 1(ONECUT1), also called Hepatocyte nuclear factor 6(HNF6) is found strong expression in liver and lower expression in testis and skin. ONECUT1 gene is mapped to 15q21.3. This gene encodes a member of the Cut homeobox family of transcription factors. Expression of the encoded protein is enriched in the liver, where it stimulates transcription of liver-expressed genes, and antagonizes glucocorticoid-stimulated gene transcription. This gene may influence a variety of cellular processes including glucose metabolism, cell cycle regulation, and it may also be associated with cancer.