

**Anti-Alpha 1 Antichymotrypsin Antibody**  
**Catalog # ABO11527****Specification**

---

**Anti-Alpha 1 Antichymotrypsin Antibody - Product Information**

Application	WB, IHC-P
Primary Accession	<a href="#">P01011</a>
Host	Rabbit
Reactivity	Human
Clonality	Polyclonal
Format	Lyophilized

**Description**

Rabbit IgG polyclonal antibody for Alpha-1-antichymotrypsin(SERPINA3) detection. Tested with WB, IHC-P in Human.

**Reconstitution**

Add 0.2ml of distilled water will yield a concentration of 500ug/ml.

**Anti-Alpha 1 Antichymotrypsin Antibody - Additional Information****Gene ID 12****Other Names**

Alpha-1-antichymotrypsin, ACT, Cell growth-inhibiting gene 24/25 protein, Serpin A3, Alpha-1-antichymotrypsin His-Pro-less, SERPINA3, AACT

**Calculated MW**

47651 MW KDa

**Application Details**

Immunohistochemistry(Paraffin-embedded Section), 0.5-1 µg/ml, Human, By Heat<br>Western blot, 0.1-0.5 µg/ml, Human<br>

**Subcellular Localization**

Secreted.

**Tissue Specificity**

Plasma. Synthesized in the liver. Like the related alpha-1-antitrypsin, its concentration increases in the acute phase of inflammation or infection. Found in the amyloid plaques from the hippocampus of Alzheimer disease brains. .

**Protein Name**

Alpha-1-antichymotrypsin

**Contents**

Each vial contains 5mg BSA, 0.9mg NaCl, 0.2mg Na<sub>2</sub>HPO<sub>4</sub>, 0.05mg Thimerosal, 0.05mg NaN<sub>3</sub>.

**Immunogen**

A synthetic peptide corresponding to a sequence in the middle region of human alpha 1

Antichymotrypsin(218-232aa EMPFDPQDTHQSRFY).

**Purification**

Immunogen affinity purified.

**Cross Reactivity**

No cross reactivity with other proteins

**Storage**

**At -20°C for one year. After reconstitution, at 4°C for one month. It can also be aliquotted and stored frozen at -20°C for a longer time. Avoid repeated freezing and thawing.**

**Sequence Similarities**

Belongs to the serpin family.

**Anti-Alpha 1 Antichymotrypsin Antibody - Protein Information**

**Name** SERPINA3

**Synonyms** AACT

**Function**

Although its physiological function is unclear, it can inhibit neutrophil cathepsin G and mast cell chymase, both of which can convert angiotensin-1 to the active angiotensin-2.

**Cellular Location**

Secreted.

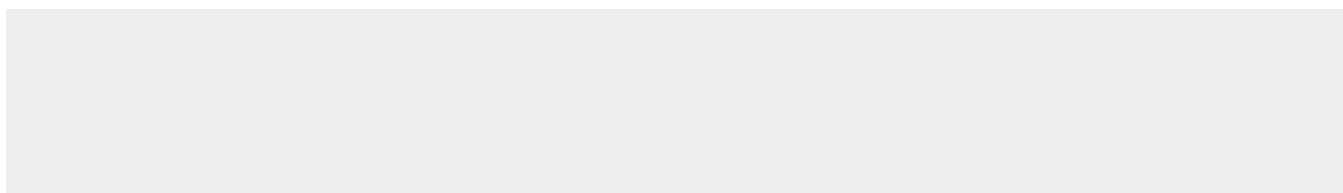
**Tissue Location**

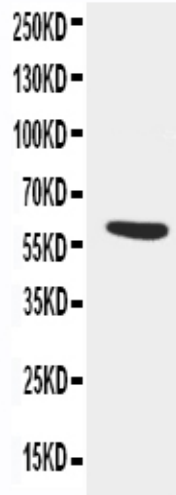
Plasma. Synthesized in the liver. Like the related alpha-1-antitrypsin, its concentration increases in the acute phase of inflammation or infection. Found in the amyloid plaques from the hippocampus of Alzheimer disease brains.

**Anti-Alpha 1 Antichymotrypsin Antibody - Protocols**

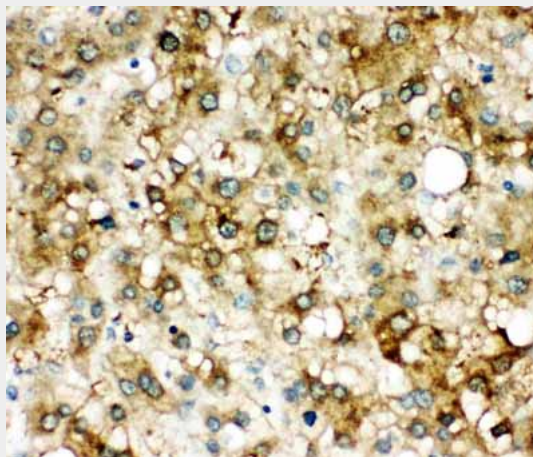
Provided below are standard protocols that you may find useful for product applications.

- [Western Blot](#)
- [Blocking Peptides](#)
- [Dot Blot](#)
- [Immunohistochemistry](#)
- [Immunofluorescence](#)
- [Immunoprecipitation](#)
- [Flow Cytometry](#)
- [Cell Culture](#)

**Anti-Alpha 1 Antichymotrypsin Antibody - Images**



Anti-alpha 1 Antichymotrypsin antibody, ABO11527, Western blottingWB: SMMC Cell Lysate



Anti-alpha 1 Antichymotrypsin antibody, ABO11527, IHC(P)IHC(P): Human Liver Cancer Tissue

### **Anti-Alpha 1 Antichymotrypsin Antibody - Background**

Alpha 1-antichymotrypsin, also called serpin peptidase inhibitor, clade A(alpha-1 antiproteinase, antitrypsin), member 3 or GIG24 is an alpha globulin glycoprotein that is a member of the serpin superfamily. In humans, it is encoded by the SERPINA3 gene. This gene is mapped to 14q32.13. The protein encoded by this gene is a plasma protease inhibitor and member of the serine protease inhibitor class. Polymorphisms in this protein appear to be tissue specific and influence protease targeting. Variations in this protein's sequence have been implicated in Alzheimer's disease, and deficiency of this protein has been associated with liver disease. Mutations have been identified in patients with Parkinson disease and chronic obstructive pulmonary disease.